

Rittal – The System.

Faster – better – everywhere.

Compact light – SZ 4140.120

Date : Jan 25, 2019

ENCLOSURES

POWER DISTRIBUTION

CLIMATE CONTROL

IT INFRASTRUCTURE

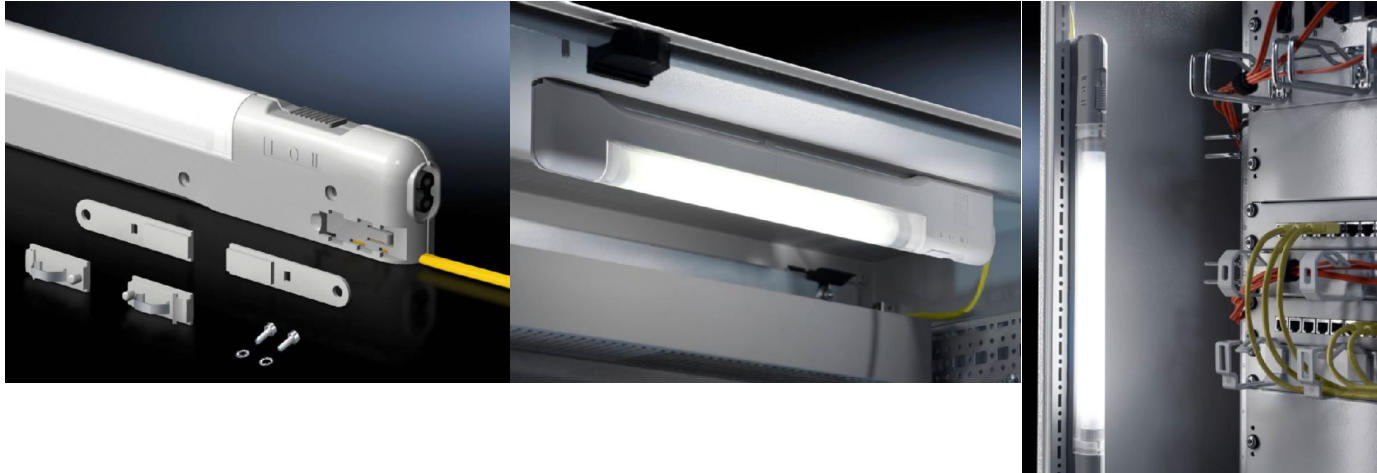
SOFTWARE & SERVICES

FRIEDHELM LOH GROUP



Compact light – SZ 4140.120

created: 25.01.2019 build on www.rittal.com/uk-en



Product description

Benefits:	<p>Slimmer: Around 50% less height and depth and therefore around 75% less volume than conventional lights</p> <p>Faster: Universal fast attachment to the TS slots via clips, screws, or powerful magnets (optional). Simply slide in at the side or rear, fit the light, and it's done!</p> <p>Door-operated switch can also be connected via a 2-pole connector</p> <p>Transparent light cover, grooved on the inside</p>
Colour:	Similar to RAL 7035
Protection category IP to IEC 60 529:	IP 20
Supply includes:	<p>Compact light with clip and screw mounting kits</p> <p>Light</p> <p>Light cover</p> <p>Connection cable</p> <p>Assembly parts</p>
Note:	Door-operated switch can also be connected via a 2-pole connector
Note on Model No.:	Cable deflector across rear possible

Product features

Dimensions:	<p>Width: 705 mm</p> <p>Height: 59 mm</p> <p>Depth: 24 mm</p>
Rated operating voltage:	<p>24 V (DC)</p> <p>Voltage tolerance: $\pm 10 \%$</p>
Installation options:	TS horizontal section of the roof frame: direct

TS, SE vertical section: direct
 SE extrusions at the front and rear of the roof frame: direct
 SE extrusions at the side of the roof frame: direct
 AE, CM, TP: with magnet mounting kit
 AE: with rail for interior installation

Mounting dimensions:	Mounting distance – clip/magnet: 650 mm Mounting distance – screw attachment: 725 mm
Operating temperature:	Operation (environment): -15°C...+45°C Bearing: -20°C...+70°C
Rated current:	With DC (max.): 0.57 A
Power consumption:	14 W
Equipment (electrical):	Ballast: Electronic ballast Light: Fluorescent lamp T5 Length of connection cable: 3 m Colour of cable: Yellow Switch (type): Integral, on/off/door-operated switch mode
Rated insulation voltage:	Depending on the power pack
Rated impulse withstand voltage, phase to earth:	Depending on the power pack
Rated impulse withstand voltage, phase to phase:	Depending on the power pack
Protection category:	II (all-insulated)
Connection options:	Integral connection cable with open end Door-operated switch
Light – installation type:	Screw-fastening Clip attachment Magnetic attachment (accessory)
Cable deflector across rear possible:	yes
Light cover:	yes
Packs of:	1 pc(s).
Weight/pack:	0.74 kg
EAN:	4028177550308
Customs tariff number:	94054095

ETIM 6.0:	EC000321
ETIM 5.0:	EC000321
eCl@ss 8.0/8.1:	27189241
eCl@ss 7.0/7.1:	27189241
eCl@ss 6.0/6.1:	27189241
eCl@ss 5.1/5.1.4:	27189241
Product description:	SZ Compact light, WHD: 705x59x24 mm, 14 W, 24 V DC, Integral on/off/door-operated switch mode, ENEC
Approvals	
Certificates:	EAC
Declarations:	Declaration of conformity