

# Rittal – The System.

Faster – better – everywhere.

## ▶ LED steady light component for signal pillars, modular – SG 2372.010

Date : Dec 6, 2017

ENCLOSURES

POWER DISTRIBUTION

CLIMATE CONTROL

IT INFRASTRUCTURE

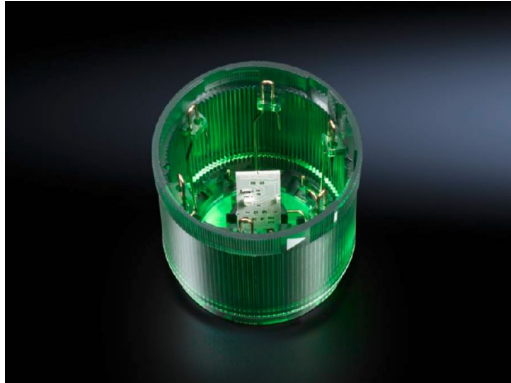
SOFTWARE & SERVICES

FRIEDHELM LOH GROUP



# LED steady light component for signal pillars, modular – SG 2372.010

created: 06.12.2017 build on [www.rittal.com/uk-en](http://www.rittal.com/uk-en)



## Product description

<b>Design:</b>	LED steady light component
<b>Description:</b>	With 360° signal transmission thanks to optimised prism system. Number of potential stages = 5 components, with identical voltage.
<b>Benefits:</b>	Simple assembly and contact via bayonet fastener. Configuration of up to five components with the same voltage. Components are available in a range of colours and voltages.
<b>Function principle:</b>	A modular layout is possible with connection, optical and acoustic components, incandescent lamps and a label panel.
<b>Material:</b>	Enclosure of polyamide Cap: Transparent polycarbonate
<b>Colour:</b>	Green
<b>Protection category IP to IEC 60 529:</b>	IP 54 if a cover or acoustic component is fitted at the top

## Product features

<b>Dimensions:</b>	Height: 56 mm Diameter: 70 mm
<b>Rated operating voltage:</b>	24 V (AC/DC)
<b>Diameter:</b>	70 mm

<b>Rated current:</b>	(max.): 25 mA
<b>Rated insulation voltage:</b>	250 V AC
<b>Rated impulse withstand voltage, phase to phase:</b>	2500 V AC
<b>Packs of:</b>	1 pc(s).
<b>Weight/pack:</b>	0.09 kg
<b>EAN:</b>	4028177220188
<b>Customs tariff number:</b>	85311095
<b>ETIM 6.0:</b>	EC000232
<b>ETIM 5.0:</b>	EC000232
<b>eCl@ss 8.0/8.1:</b>	27371220
<b>eCl@ss 7.0/7.1:</b>	27371220
<b>eCl@ss 6.0/6.1:</b>	27371220
<b>eCl@ss 5.1/5.1.4:</b>	27371220
<b>Product description (long):</b>	SG LED steady light component, for signal pillar, modular, 24 V AC/DC, 25 mA, green
<b>Approvals</b>	
<b>Approvals:</b>	C-UL UL + C-UL UR
<b>Certificates:</b>	EAC
<b>Declarations:</b>	Declaration of conformity