



### DESCRIPTION:

Standard Copper Tube Terminals are manufactured from seamless copper tube to BS EN 12449: 1999. All terminals are provided with an inspection hole to ensure the conductor is fully inserted before crimping. A bell mouth also ensures a smooth transition from lug to cable, thus avoiding the problems of chafing where the component is subject to vibration. The internal barrel diameters suit standard cables as defined in BS6360. All Cablecraft terminals fully comply with BS EN 61238-1-2003 and BS 4579 bright electro tin plating to BS 1872: 1974.

### SPECIFICATION:

**MATERIAL:**

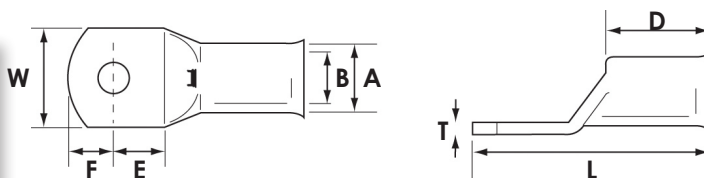
Seamless Copper Tube to BSEN 12449: 1999.

**VOLTAGE:**

3.3kv

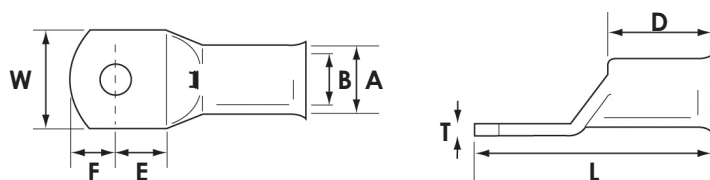
**APPROVALS:**

BS EN 61238-1-2003 and BS 4579 bright electro tin plating to BS 1872: 1974.



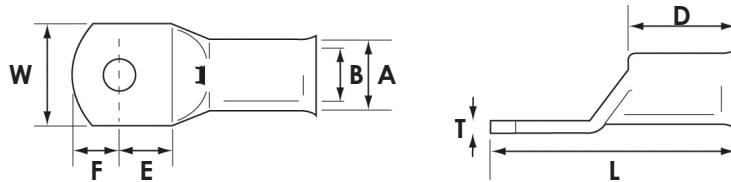
**DIMENSIONS (mm)**

CABLE SIZE mm <sup>2</sup>	PART NO.	STUD SIZE (mm)	A	B	W	E	F	D	L	T	PACK QTY
10	CCT10-5	5	6.6	4.7	10.8	5.6	5.2	4.7	26.0	1.7	1
	CCT10-6	6	6.6	4.7	10.8	5.6	5.2	4.7	26.0	1.7	1
	CCT10-8	8	6.6	4.7	13.5	8.0	7.0	4.7	29.5	1.2	1
	CCT10-10	10	6.9	4.4	16.0	12.0	10.0	4.7	39.0	1.5	1
	CCT10-12	12	6.9	4.4	18.0	12.0	10.0	4.7	39.0	1.2	1
	CCT10-BL	-	-	6.9	4.4	18.0	12.0	10.0	4.7	39.0	1.2
16	CCT16-6	6	7.5	5.5	10.8	8.8	6.2	5.5	30.0	2.0	1
	CCT16-8	8	7.5	5.5	13.5	8.0	7.0	5.5	30.0	1.6	1
	CCT16-10	10	7.5	5.5	15.0	10.9	9.6	5.5	35.5	1.5	1
	CCT16-12	12	8.0	5.6	18.0	12.0	10.0	5.5	42.0	1.3	1
	CCT16-BL	-	-	8.0	5.6	18.0	12.0	10.0	5.5	42.0	1.3
25	CCT25-6	6	9.4	7.0	13.8	8.8	6.2	7.0	32.5	2.4	1
	CCT25-8	8	9.4	7.0	13.8	8.0	7.0	7.0	32.5	2.4	1
	CCT25-10	10	9.4	7.0	16.0	10.9	9.6	7.0	38.0	2.1	1
	CCT25-12	12	9.4	7.0	18.0	10.5	10.0	7.0	38.0	1.9	1
	CCT25-BL	-	-	9.4	7.0	18.0	10.5	10.0	7.0	38.0	1.9



DIMENSIONS (mm)

CABLE SIZE mm <sup>2</sup>	PART NO.	STUD SIZE (mm)	A	B	W	E	F	D	L	T	PACK QTY
35	CCT35-6	6	10.6	8.2	15.3	8.8	6.2	8.2	35.0	2.4	1
	CCT35-8	8	10.6	8.2	15.3	8.0	7.0	8.2	35.0	2.4	1
	CCT35-10	10	10.6	8.2	15.3	10.9	9.6	8.2	40.5	2.4	1
	CCT35-12	12	10.6	8.2	18.0	10.5	10.0	8.2	40.5	2.2	1
	CCT35-BL	-	10.6	8.2	18.0	10.5	10.0	8.2	40.5	2.2	1
50	CCT50-6	6	11.9	9.5	17.4	8.8	6.2	9.5	37.0	2.5	1
	CCT50-8	8	11.9	9.5	17.4	8.0	7.0	9.5	37.0	2.5	1
	CCT50-10	10	11.9	9.5	17.4	10.9	9.6	9.5	42.5	2.5	1
	CCT50-12	12	11.9	9.5	17.4	10.9	9.6	9.5	42.5	2.5	1
	CCT50-BL	-	11.9	9.5	17.4	10.5	10.0	9.5	42.5	2.5	1
70	CCT70-6	6	14.5	11.5	20.9	8.8	6.0	11.5	40.5	3.0	1
	CCT70-8	8	14.5	11.5	20.9	8.0	7.0	11.5	46.0	3.0	1
	CCT70-10	10	14.5	11.5	20.9	10.9	9.6	11.5	46.0	3.0	1
	CCT70-12	12	14.5	11.5	20.9	10.5	10.0	11.5	50.0	3.0	1
	CCT70-14	14	14.5	11.5	20.9	13.0	13.0	11.5	50.0	3.0	1
	CCT70-16	16	14.5	11.5	20.9	13.0	13.0	11.5	50.0	3.0	1
	CCT70-BL	-	14.5	11.5	20.9	13.0	13.0	11.5	50.0	3.0	1
95	CCT95-6	6	16.7	13.5	24.3	10.9	9.6	19.0	49.5	3.2	1
	CCT95-8	8	16.7	13.5	24.3	10.9	9.6	19.0	49.5	3.2	1
	CCT95-10	10	16.7	13.5	24.3	10.9	10.0	19.0	49.5	3.2	1
	CCT95-12	12	16.7	13.5	24.3	10.5	10.8	19.0	49.5	3.2	1
	CCT95-14	14	16.7	13.5	24.3	13.0	13.0	19.0	56.0	3.2	1
	CCT95-16	16	16.7	13.5	24.3	13.0	13.0	19.0	56.0	3.2	1
	CCT95-BL	-	16.7	13.5	24.3	13.0	13.0	19.0	56.0	3.2	1
120	CCT120-8	10	19.0	15.0	27.3	14.4	9.6	20.0	55.5	4.0	1
	CCT120-10	12	19.0	15.0	27.3	14.0	10.0	20.0	55.5	4.0	1
	CCT120-12	14	19.0	15.0	27.2	13.2	10.8	20.0	55.5	4.0	1
	CCT120-14	16	19.0	15.0	27.3	13.0	13.0	20.0	60.0	4.0	1
	CCT120-16	-	19.0	15.0	27.3	13.0	13.0	20.0	60.0	4.0	1
150	CCT150-10	10	21.0	16.5	30.2	14.0	10.0	23.0	61.0	4.5	1
	CCT150-12	12	21.0	16.5	30.2	14.0	10.0	23.0	61.0	4.5	1
	CCT150-14	14	21.0	16.5	30.2	13.2	10.8	23.0	61.0	4.5	1
	CCT150-16	16	21.0	16.5	30.2	13.0	13.0	23.0	61.0	4.5	1
	CCT150-BL	-	21.0	16.5	30.2	13.0	13.0	23.0	61.0	4.5	1



DIMENSIONS (mm)

CABLE SIZE mm <sup>2</sup>	PART NO.	STUD SIZE (mm)	A	B	W	E	F	D	L	T	PACK QTY
185	CCT185-10	10	23.0	18.5	33.3	15.5	9.2	29.0	66.5	4.5	1
	CCT185-12	12	23.0	18.5	33.3	15.5	9.2	29.0	68.0	4.5	1
	CCT185-14	14	23.0	18.5	33.3	15.5	9.2	29.0	68.0	4.5	1
	CCT185-16	16	23.0	18.5	33.3	13.0	13.0	29.0	70.0	4.5	1
	CCT185-BL	-	23.0	18.5	33.3	13.0	13.0	29.0	70.0	4.5	1
240	CCT240-10	10	26.0	21.0	37.7	18.0	17.0	32.0	88.0	5.0	1
	CCT240-12	12	26.0	21.0	37.7	18.0	17.0	32.0	88.0	5.0	1
	CCT240-14	14	26.0	21.0	37.7	18.0	17.0	32.0	88.0	5.0	1
	CCT240-16	16	26.0	21.0	37.7	18.0	17.0	32.0	88.0	5.0	1
	CCT240-20	20	26.0	21.0	37.7	18.0	17.0	32.0	88.0	5.0	1
	CCT240-BL	-	26.0	21.0	37.7	18.0	17.0	32.0	88.0	5.0	1
300	CCT300-10	10	28.0	23.0	41.0	18.0	17.0	37.0	97.0	5.0	1
	CCT300-12	12	28.0	23.0	41.0	18.0	17.0	37.0	97.0	5.0	1
	CCT300-14	14	28.0	23.0	41.0	18.0	17.0	37.0	97.0	5.0	1
	CCT300-16	16	28.0	23.0	41.0	18.0	17.0	37.0	97.0	5.0	1
	CCT300-20	20	28.0	23.0	41.0	18.0	17.0	37.0	97.0	5.0	1
	CCT300-BL	-	28.0	23.0	41.0	18.0	17.0	37.0	97.0	5.0	1
400	CCT400-10	10	32.0	27.0	47.3	22.0	22.0	38.0	108.0	5.0	1
	CCT400-12	12	32.0	27.0	47.3	22.0	22.0	38.0	108.0	5.0	1
	CCT400-14	14	32.0	27.0	47.3	22.0	22.0	38.0	108.0	5.0	1
	CCT400-16	16	32.0	27.0	47.3	22.0	22.0	38.0	108.0	5.0	1
	CCT400-20	20	32.0	27.0	47.3	22.0	22.0	38.0	108.0	5.0	1
	CCT400-BL	-	32.0	27.0	47.3	22.0	22.0	38.0	108.0	5.0	1
500	CCT500-10	10	36.0	30.0	53.0	28.0	24.0	38.0	117.0	6.9	1
	CCT500-12	12	36.0	30.0	53.0	28.0	24.0	38.0	117.0	6.9	1
	CCT500-14	14	36.0	30.0	53.0	28.0	24.0	38.0	117.0	6.9	1
	CCT500-16	16	36.0	30.0	53.0	28.0	24.0	38.0	117.0	6.9	1
	CCT500-20	20	36.0	30.0	53.0	28.0	24.0	38.0	117.0	6.9	1
	CCT500-BL	-	36.0	30.0	53.0	28.0	24.0	38.0	117.0	6.9	1



**CABLECRAFT**  
creative wiring solutions



Cablecraft House, Circle Business Centre, Blackburn Road, Houghton-Regis, Bedfordshire, LU5 5DD.  
Phone: 01582 606033 • Fax: 01582 606063 • Email: sales@cablecraft.co.uk • Web: www.cablecraft.co.uk

VAT NO. GB 639 920 900 • CO. REG. NO. 2478297