



# Connected Factory

Driving Business Value for the IoT Connected Enterprise

Marcus Smith CEng MIET

Technical Marketing Engineer – Industrial Networking Group

April 2018



Watch  
Video



# Connected Factory—What's on Your Mind

Asset Optimization... Improving **Flexibility, Uptime, Efficiency**

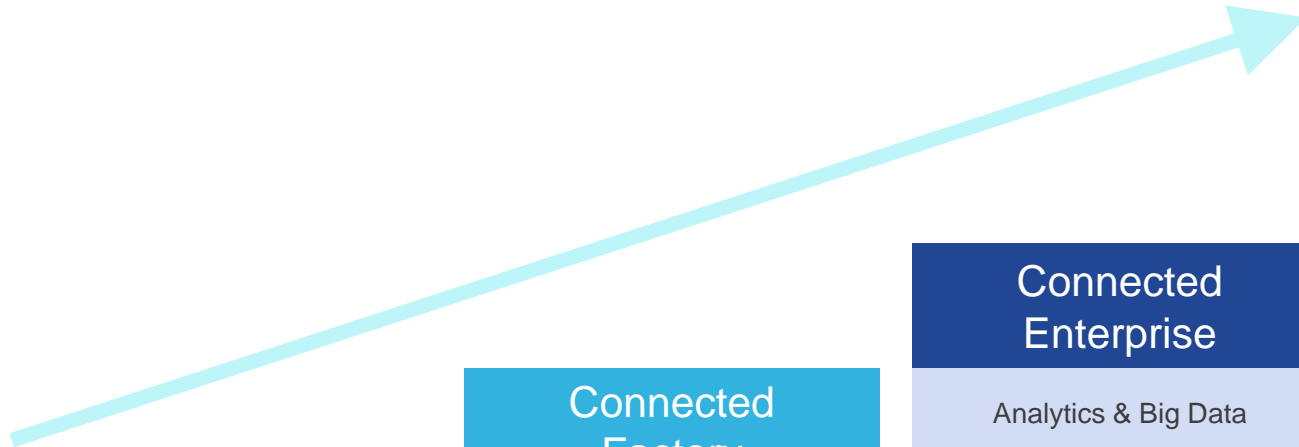
Faster **Time to Market** and NPI (New Product Introduction)

Workforce **Productivity**, New Skills, Safety, Aging Workforce Dilemma

**Lower Total Cost** of Ownership

Security, Security, Security

# Digital Manufacturing Journey



**Off-Line**

**Connected Factory**

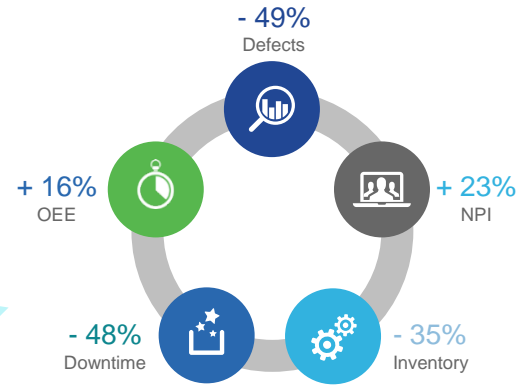
- Factory Network
- Factory Security
- Factory Wireless

**Connected Enterprise**

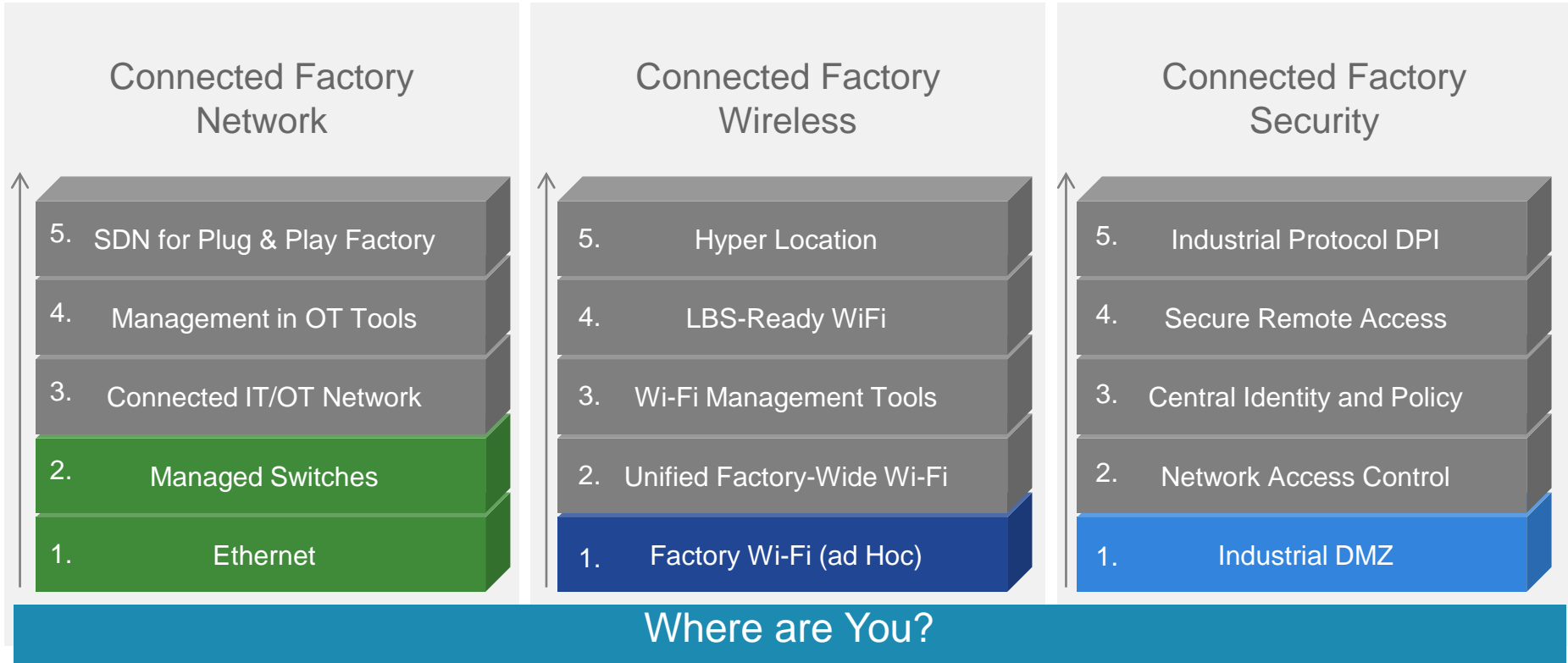
- Analytics & Big Data
- Virtualization & Compute
- Connected Machines
- Factory Collaboration
- Location Services

**Supply Chain Orchestration**

- Supply Chain Collaboration
- Design Collaboration

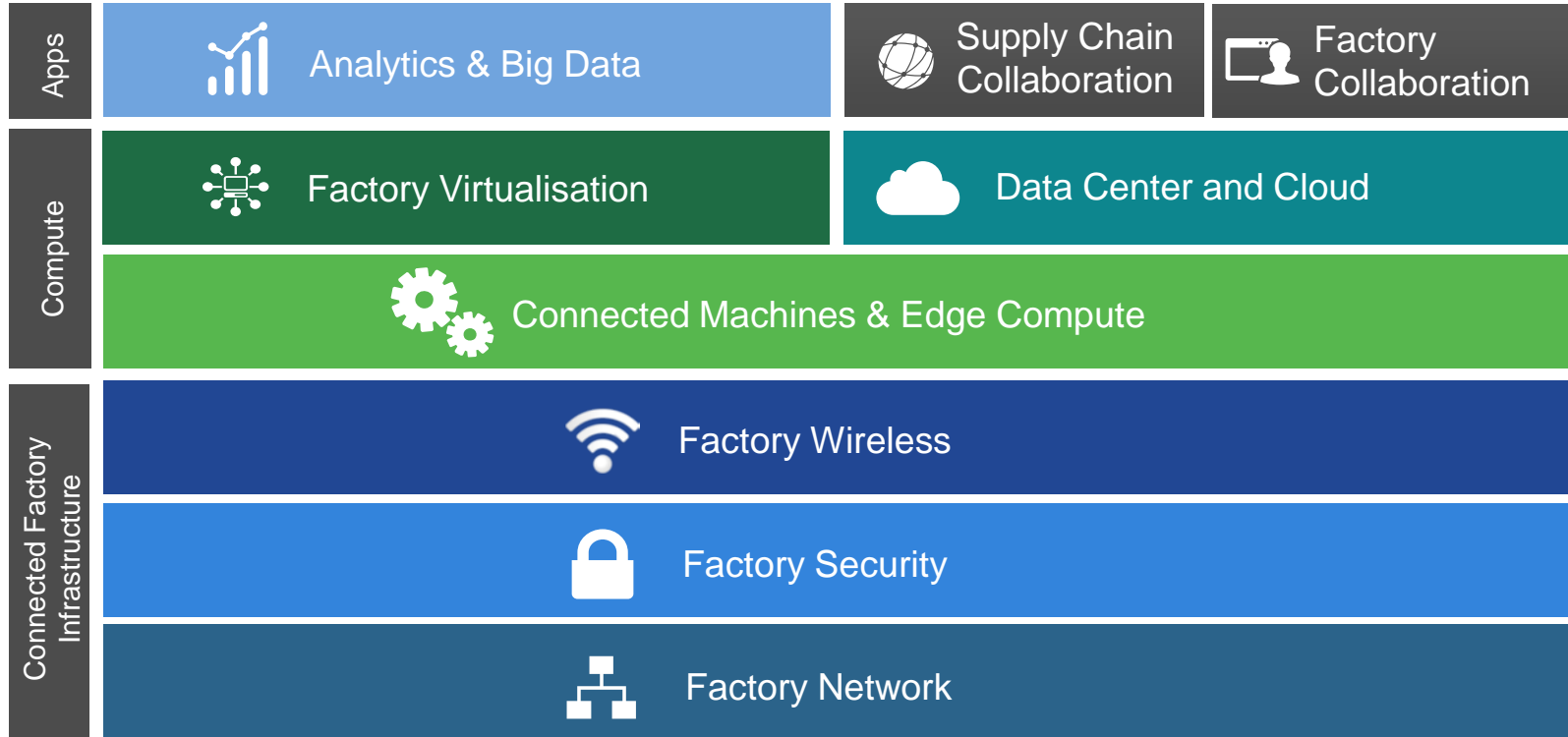


# IoT-Readiness in Today's Typical Factory





# Digital Manufacturing Solutions



# Factory Network



## WHAT IS IT

# Unified Converged Factory Network

## CHALLENGE

Complex network silos creating downtime, data isolation and vulnerabilities. Inflexible and high TCO.

“Network issues took us hours and sometimes days to troubleshoot. The downtime associated with these issues was extremely costly.” - Dave Gutshall – Harley Davidson

## CRITICAL NEEDS

- Converged Network for Flexible Automation
- Rapid Fault Isolation
- Resiliency (REP, MRP)
- Ease of use (NAT)
- App / Data Integration

## CISCO PORTFOLIO



IE 2000, 3000  
CGS2000



IP67



IE 4000



IE 5000

### Industrial Switching



Cisco IND



CGR 2000



ASR 903



ASR 902

### Industrial Routing

## BUSINESS OUTCOMES



OEE  
Improvement



Reduced  
Downtime





# Factory Network Maturity

## Starting Point:

Proprietary  
Serial  
Islands

## Phase 1

### Unmanaged, unconverged Ethernet

- Richer sensor data
- Still siloed
- No security

## Phase 2

### Converged Plantwide Network

Converge siloed  
networks for IOT  
visibility & cost  
savings

## Phase 3

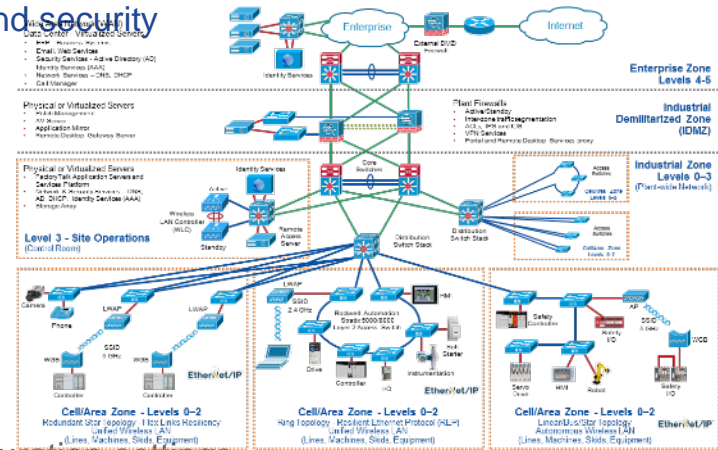
### Flexible, Multi-Service Platform

- Controls security
- Controls Mobility
- Video & Collaboration
- Remote Monitoring
- CLOUD, FOG
- Software Defined Factories

Increasing Value

# Reference Architectures

- Tested, validated and documented reference architectures
  - Developed from use cases - customer and application
  - Tested for performance, availability, repeatability, scalability and security
  - Comprised of nine (9) Cisco® and Rockwell Automation® Validated Designs
- Built on technology and industry standards
  - “Future-ready” network design
- Content relevant to both OT and IT Engineers
- Deliverables
  - Recommendations, best practices, design and implementation guidance, documented test results and configuration settings
  - Simplified design, quicker deployment, reduced risk in deploying new technology





# Cisco Validated Designs

<https://www.cisco.com/c/en/us/solutions/design-zone.html?stickynav=3>

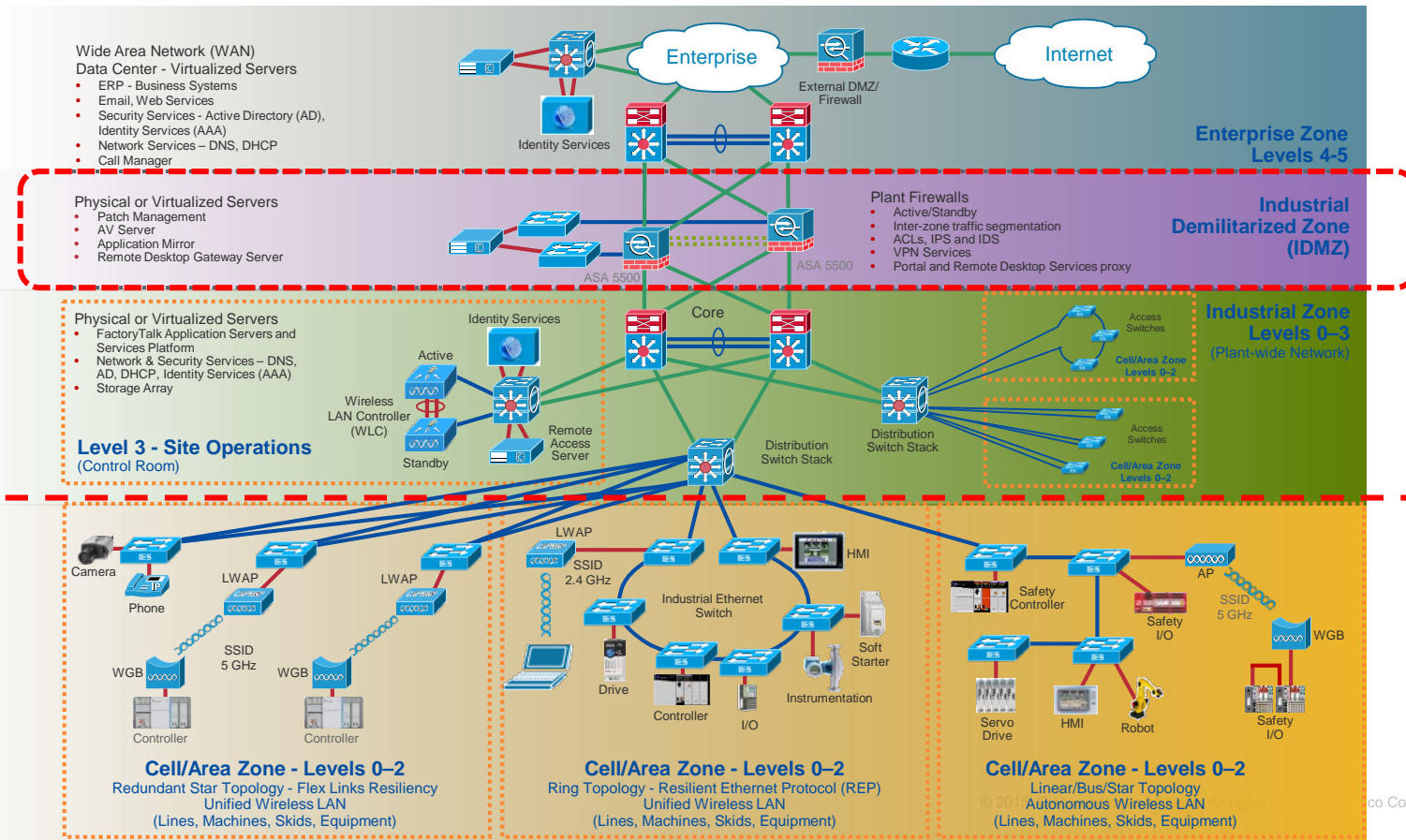
Design guides by category

- Networking
  - Campus wired and wireless LAN
  - Data center networking
  - Digital Network Architecture (DNA)
  - Evolved programmable network
  - Branch/WAN and Internet edge
  - All networking guides
- Mobility
  - All mobility guides
- Archive
  - IPv6
  - Application performance
  - IP video surveillance
  - Medianet
- Security
  - Cisco AnyConnect
  - Enterprise campus security
  - Security in the branch
  - Security integrated infrastructures
  - Security in WAN
  - All security guides
- Industries
  - Compliance
  - Manufacturing
  - Oil and Gas
  - Transportation
  - Utilities
  - All industries guides
- Data Center
  - Big data
  - Data center
  - Desktop
  - FlexPod
  - SAP
  - All data center guides
- Collaboration
  - Remote Expert
  - All collaboration guides

Industry	Solution	Design Guide Description
Manufacturing	enter search terms	enter search terms
Manufacturing	Connected Factory-CPwE	Solution to assist manufacturers seeking to integrate or upgrade their Industrial Automation and Control System (IACS) networks to standard Ethernet and IP networking technologies.
Manufacturing	Connected Factory - PROFINET	Solution for PROFINET-based industrial environments to integrate Cisco Industrial Ethernet switches into the automation network.
Manufacturing	Connected Factory - CC-Link IE	Solution for CC-Link IE-based industrial environments to integrate Cisco Industrial Ethernet switches into the automation network.
Manufacturing	Connected Machine	Enable rapid and repeatable machine connectivity, providing business improvements such as overall equipment effectiveness (OEE) and machine monitoring.
Manufacturing	Connected Factory - Network Management for Operational Technology	Discusses the use of Cisco's Industrial Network Director application for monitoring industrial network assets and discovering automation devices within the context of the Connected Factory solution.

# Converged Plantwide Ethernet (CPwE) Reference Architecture

ISA 95 principle of levels  
 ISA 99 (IEC62443) principle of strong segmentation  
 Use of an IDMZ





# Factory Security



## WHAT IS IT

## Pervasive Physical and Cyber Security for the Factory

## CHALLENGE

Manufacturing ranks annually among top three targeted industries for cyber attacks

“...a number of cyber espionage campaigns discovered in 2014 targeted key sectors—such as manufacturing—that use industrial control system (ICS) technologies to automate physical processes.” - *Symantec Internet security Threat Report 2015*

## CRITICAL NEEDS

- Identity Services
- Physical Security
- Machine / controls security
- Secure Remote Access
- Unlock Plant Floor data

## CISCO PORTFOLIO



Industrial Routers



Cisco Firewalls



Video Surveillance Manager



Physical Access Manager



Industrial Ethernet



Cisco ISE



AMP, Sourcefire Defense Center, Cloud Security



IP Cameras

Software Defined Segmentation (TrustSec)

### Cyber Security

### Physical Security

## BUSINESS OUTCOMES



Reduced Risk

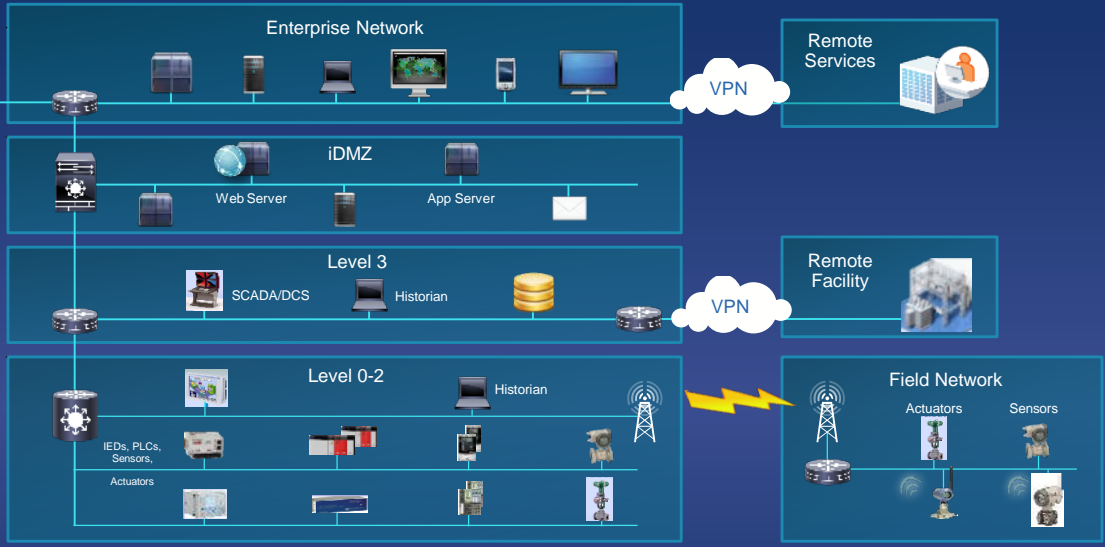


Reduced Downtime

# Connected Factory: Cyber Security Protection

## Onion Layers

- Secure Zones**  
Cells → Zones → Plants
- Segmented Access (Role-Based)**  
Security Policy, AAA and Identity Services
- Physical Security**  
Smart, Programmable Cameras
- Industrial Cyber Security**  
Security Monitoring, Threat Detection, Incident and Event Monitoring



Application Visibility, IPS/IDS



Switching



Routers



Network and Security Mgmt.



Identity Services Engine



Video Surveillance Manager

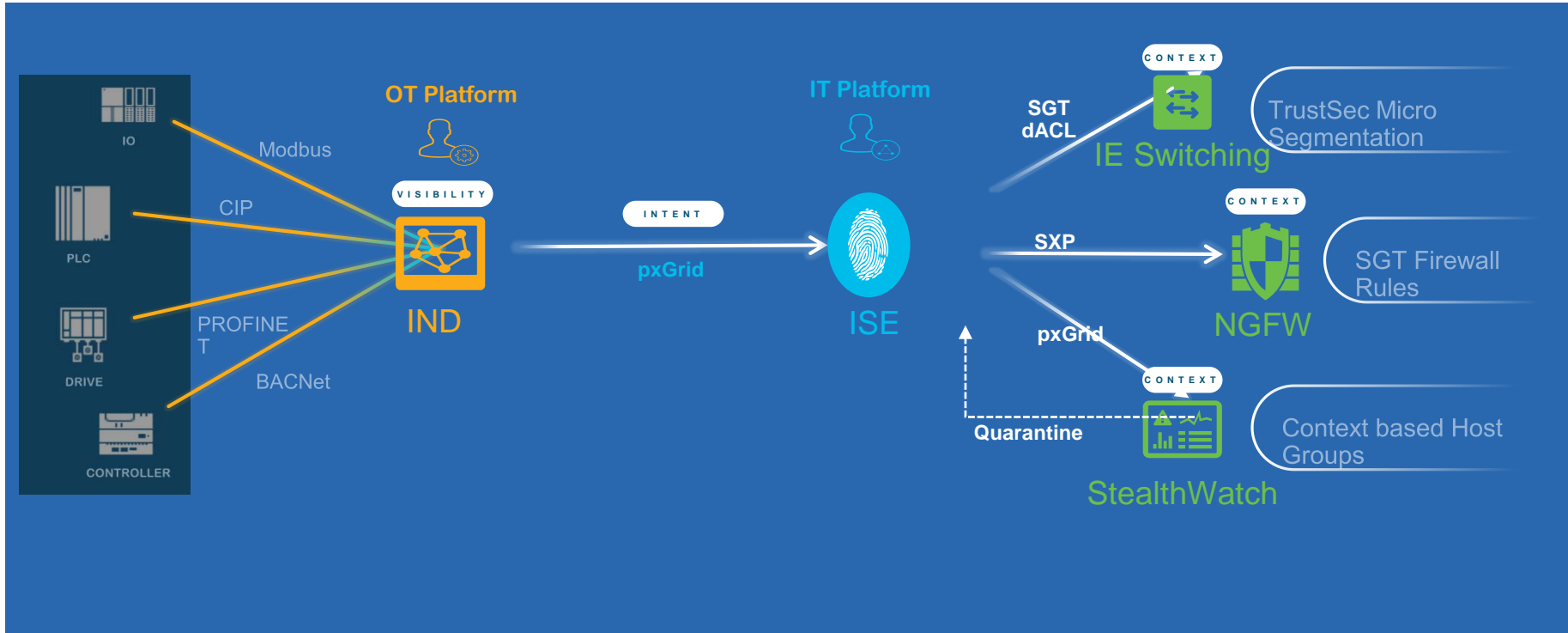


Firewalls



Access Points

# IoT Threat Defense Solution



# Factory Wireless



## WHAT IS IT

### Unified Wireless for Mobile Visibility and Productivity

## CHALLENGE

Lack of mobile visibility and access to machines and tools. Disparity between wired and wireless networks.

“In the factory, the ability to locate major parts and tooling on a timely basis is critical... WiFi LBS will streamline our production environment, by not having to replicate tooling and pieces of gear..” - *Jim Farrecker - Boeing*

## CRITICAL NEEDS

- Centralised Management
- Reliability
- Simple Deployment
- Integrated Security
- Lower Total Cost vs. Ad Hoc Deployments
- Location-Based Services

## CISCO PORTFOLIO



Field AP 1552



Manufacturing WGB/AP



Industrial AP IW 3700 802.11ac



Mobile IP Gateway



RFID and BlueTooth for Location-Based Services

## BUSINESS OUTCOMES



**Reduced Downtime**



**OEE Improvement**

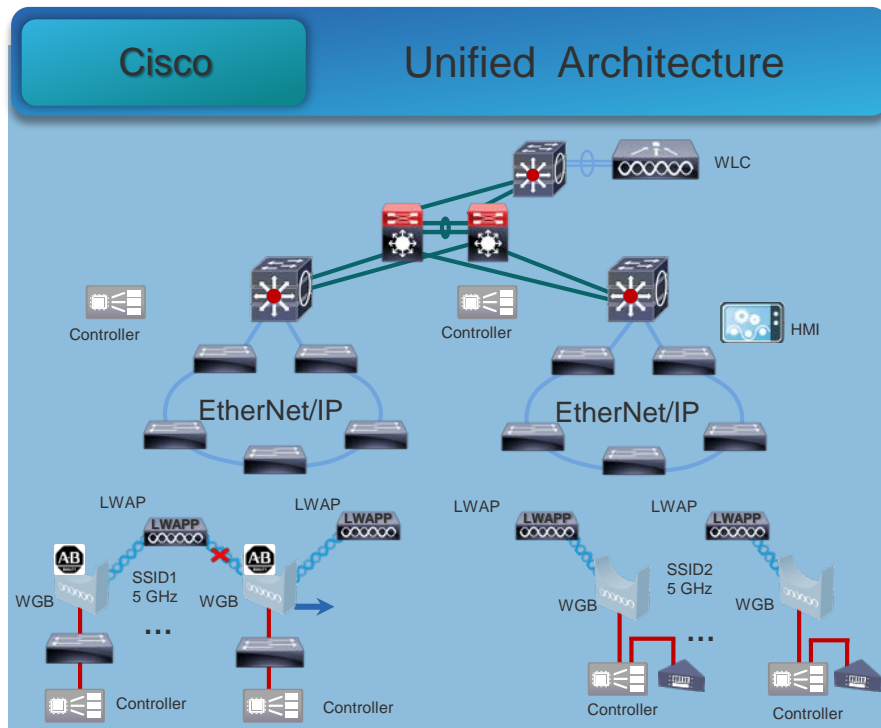
# Unified Architecture

## Features

- Centralized management and control
- Failover and self-healing mechanisms
- Foundational services: secure enterprise user, contractor and guest access

## Benefits

- Zero-touch deployment
- Reduced operational expenses
- Support for IACS Applications
- Increased Reliability & Security
- Support for plant-wide mobility and scalability







# Connected Machines & Edge Compute



## WHAT IS IT

Embedded Switching, Security & Compute to Enable Connectivity and Edge Data Capture and Analytics

## CHALLENGE

Lack of visibility to machine data (temp, torque, hours, etc) to monitor and predict machine-related downtime.

“We have cases where downtime is costing over \$20,000 per minute. The ability to predict service requirements will have a tremendous impact.” - Rick Schneider – NA CEO FANUC Robotics

## CRITICAL NEEDS

- Machine Monitoring, OEE
- MTConnect, OPC UA integration,
- Scalable data acquisition
- Enterprise security compliance and policy
- Open Machine Architecture
- Time-sensitive deterministic communications

## CISCO PORTFOLIO

- Cisco IOT Gateways
- Cisco IOx/Devnet
- Cisco UCS Server
- Security Appliances
- TSN
- Cisco IND (Net Mgmt)
- IE-2000/IE-4000

## BUSINESS OUTCOMES



**OEE Improvement**



**Reduced Downtime**



# What is IOx?



## Application Framework

provides a **simple** and **consistent** way for hosting application on Cisco edge devices.



## Fog Director

provides **open and scalable** Application Lifecycle Management and Monitoring capability.



## IOx SDK & Cisco Devnet

provides the Development Environment for application developers.

Devnet provides online documentation, code and sandbox environment.

# Connected Machines Solutions

## Machine as a Service

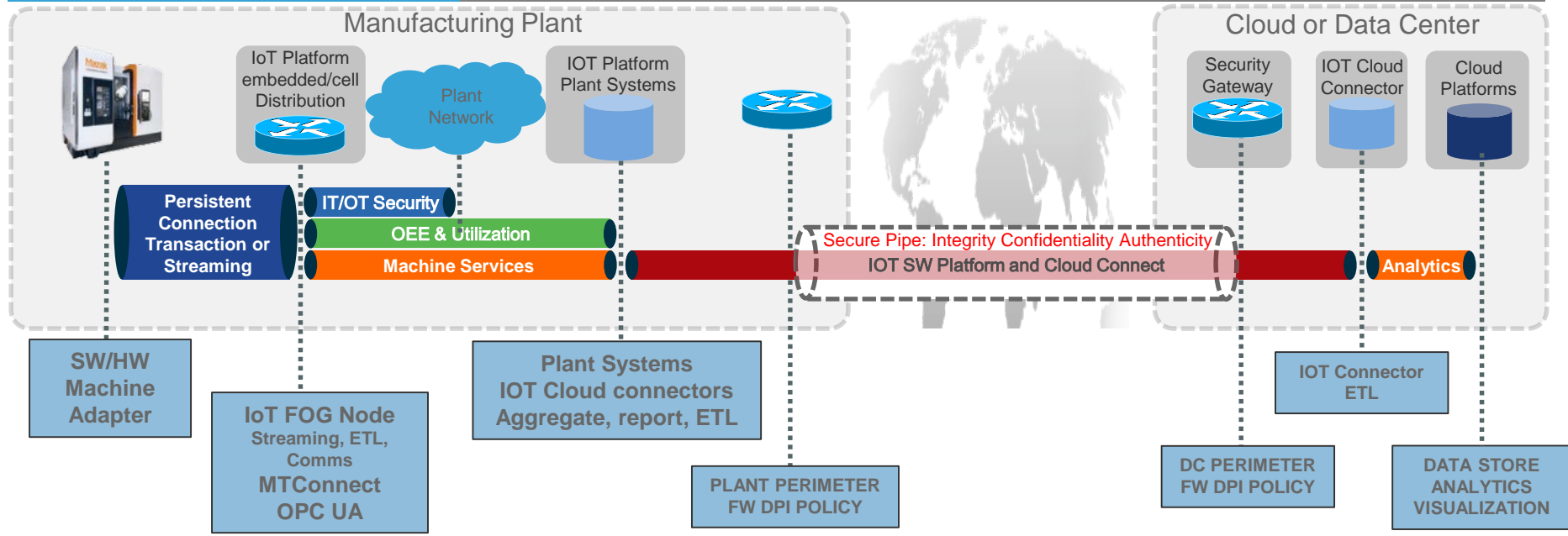
### Machine monitoring

green light,  
utilisation,  
OEE  
streaming analytics

### Connected Machines

Rapid Provisioning  
IT/OT Interface, security

Zero Down Time like Services  
Condition based Monitoring  
New OEM services models w/ SLA's  
Machine, Process, & Quality Optimization  
Advanced Analytics



# Factory Virtualization



## WHAT IS IT

Massively reduce the number of plant floor PCs to improve efficiency and reduce risk.

## CHALLENGE

Hundreds of PCs for data collection, interfacing to machine. Each one independently managed, patched, recovered, secured.

“...each factory machine has its own flavor of laptop and software required for tooling changes or updates. Maintenance has to carry around a set of laptops, each with its own OS, software, and hardware that differs depending on their machine. Most laptops have outdated software, hardware, and have security vulnerabilities.” - Plant Engineer - Major Automotive Manufacturer

## CRITICAL NEEDS

- Reduction in Operating Systems
- Reduce hardware footprint
- Reduced attack footprint
- Headless workstations
- Thin or Zero Clients
- Flexible Edge Analytics
- Scalable Compute

## CISCO PORTFOLIO



IE 4000

Switching



UCS

Compute

## BUSINESS OUTCOMES

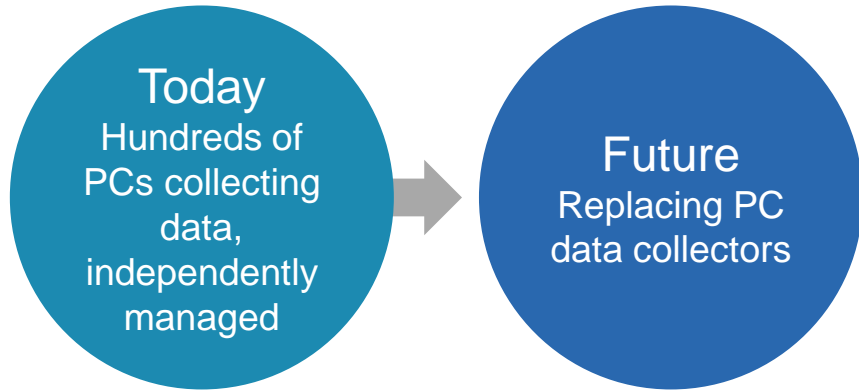


Reduced Risk

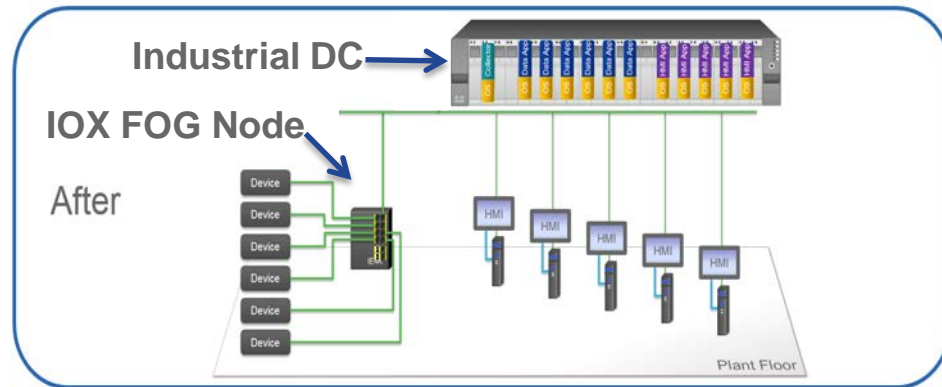


Reduced Downtime

# Factory Virtualisation Solution



Scalable Compute:  
IOX > Industrial DC > Cloud



# Data Center and Cloud



## WHAT IS IT

Data center and secure cloud platform for virtual management of factory test, quality and traceability data worldwide

## CHALLENGE

Unified, scalable compute at the data center and secure cloud access for offsite data and analytics

## CRITICAL NEEDS

- Real-time visibility
- Higher security
- Improved integrations
- Faster ramp up of new factories – 80 % less time

## CISCO PORTFOLIO

- Data Center Compute
- Data Center Security
- Data Center Switching



## BUSINESS OUTCOMES



OEE  
Improvement



Reduced  
Downtime

# Analytics & Big Data



## WHAT IS IT

Harness the power of big data analytics to quickly solve assembly machines production and quality issues

## CHALLENGE

Capture production data in realtime to see opportunities to cycle down machines or adjust supply chain

## CRITICAL NEEDS

- Velocity, volume and variety of data hinders proactive business decisions
- Limited access to data
- Factory floor machine downtimes

## CISCO PORTFOLIO



Fog Data Services



IOx



Cisco Connected Streaming Analytics

## BUSINESS OUTCOMES



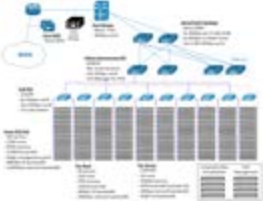
OEE Improvement



Reduced Downtime



# Cisco Multi-Tier Analytics



**Corporate Cloud**  
*HPC & DV*  
Data Mining & Modeling  
Inter-Cloud Data Lake



**Factory**  
*Fog Aggregation Nodes*  
Factory History & Trends  
Reports & Dashboards



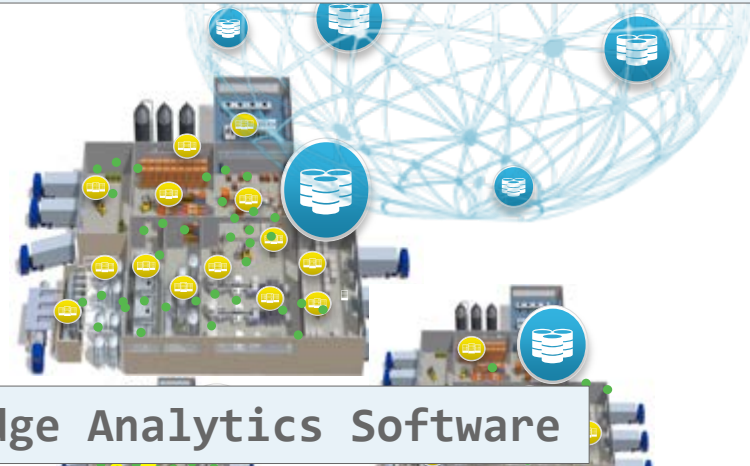
**Plant Areas**  
*Fog Node*  
Real-Time Dashboards  
Alerting



**Robots & Cells**  
*Sensors*  
*Devices*  
Edge Analytics

**Applications and Platform**

Deployed in Customer Data Center  
or Plant



**Edge Analytics Software**

Deployed on Cisco IOX Devices

# Factory Collaboration



## WHAT IS IT

Video, Voice and Digital Signage Solutions that Enable Secure Factory Collaboration

## CHALLENGE

Experts in remote locations and need for design and engineering collaboration.  
Visibility to key metrics on the plant floor

## CRITICAL NEEDS

- Remote Expert Access
- Real-time visibility to plant metrics
- Cost effective voice communications

## CISCO PORTFOLIO

- Cisco IP Video
- Librestream Virtual Collaboration
- Rugged VOIP Phone Systems
- Digital Signage
- Webex



## BUSINESS OUTCOMES

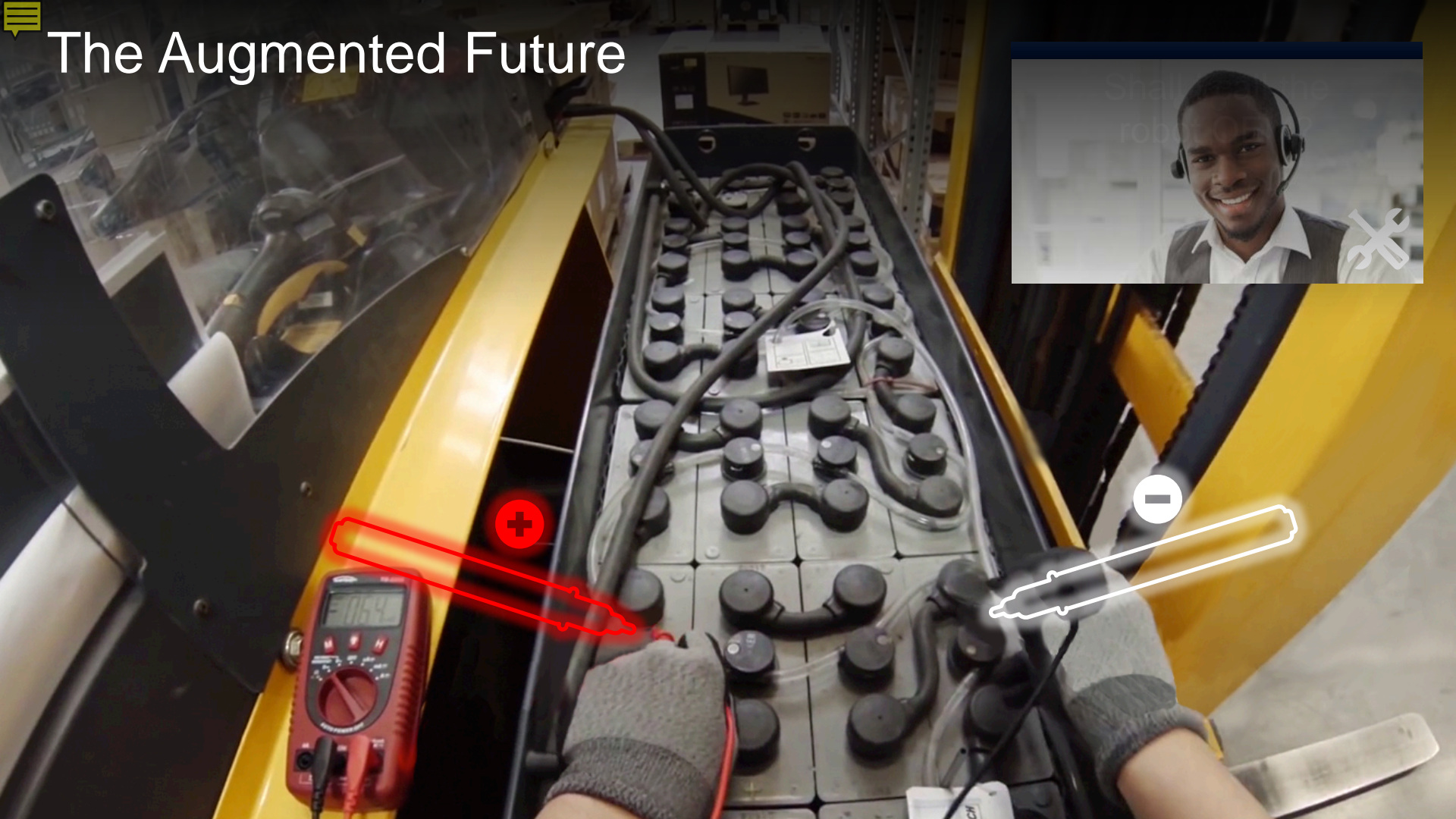


OEE  
Improvement



Reduced  
Downtime

# The Augmented Future

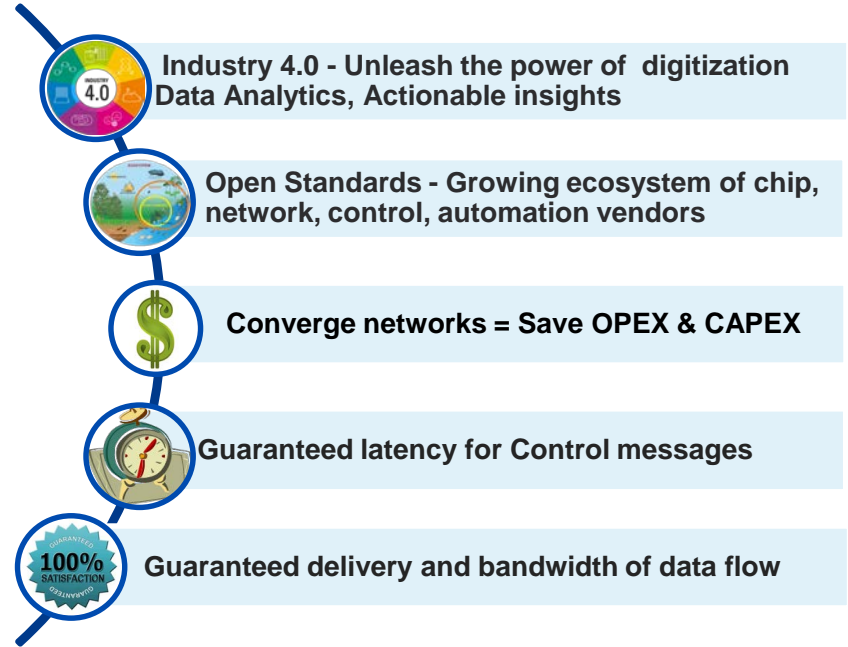
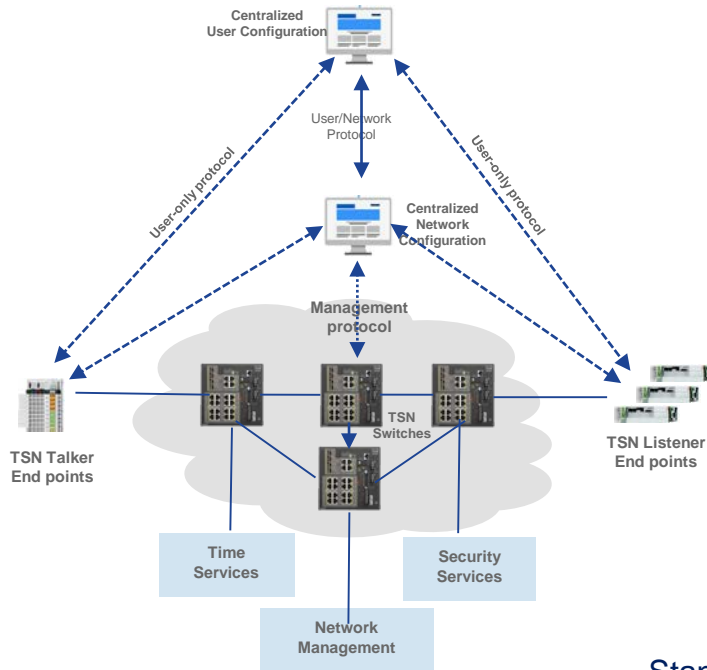


Thank you.



# Deterministic Ethernet with IEEE 802.1 TSN

Open Standards based solution, secure and easy to use



Standards - IEEE 802.1AS, IEEE 1588, IEEE 802.1Qbv, IEEE 802.1Qcc  
Available at Launch on IE 4000 on 15.2(5)E2

# Connected Machines with IOx

## Predictive Maintenance use case



**Mazak**



Securely Connect >

> Immediately Transform >

> Deliver Insight