

Rittal – The System.

Faster – better – everywhere.

Captive nuts – TS 4165.000

Date : Jan 25, 2019

ENCLOSURES

POWER DISTRIBUTION

CLIMATE CONTROL

IT INFRASTRUCTURE

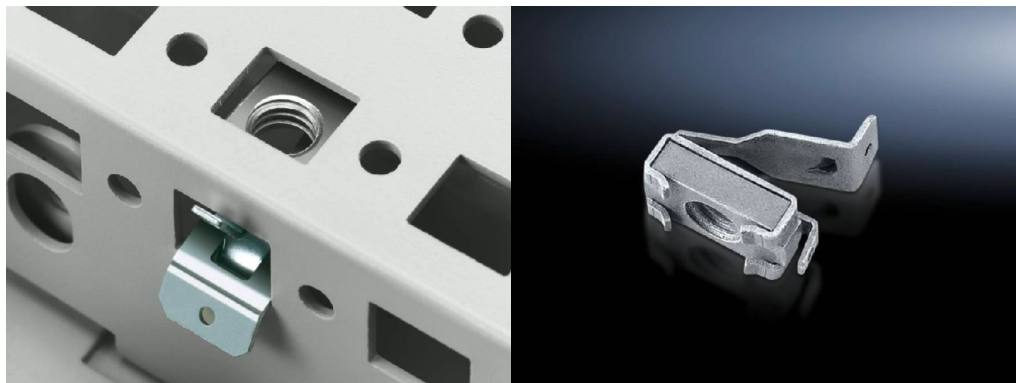
SOFTWARE & SERVICES

FRIEDHELM LOH GROUP



Captive nuts – TS 4165.000

created: 25.01.2019 build on www.rittal.com/uk-en



Product description

Description: The compression spring, designed as an insertion aid, ensures reliable mechanical and electrical connection in the system punchings.

Product features

Installation options: On enclosures and rails with rectangular system punching 12.5 x 10.5 mm.
Vertical TS, SE enclosure section via adaptor rails for PS compatibility
TS horizontal, direct
On the horizontal SE enclosure section, bottom, directly
On the horizontal SE enclosure section, (only top in the depth), directly
Punched rails 23 x 23 mm
Punched section without mounting flange, 23 x 73 mm
Punched section without mounting flange, 45 x 88 mm
Punched section with mounting flange, 23 x 73 mm

Thread: Type: M8

Packs of: 50 pc(s).

Weight/pack: 0.45 kg

EAN: 4028177093003

Customs tariff number: 73181692

ETIM 6.0: EC002358

ETIM 5.0: EC002358

eCl@ss 8.0/8.1: 23110815

eCl@ss 7.0/7.1:	27189234
eCl@ss 6.0/6.1:	27189234
eCl@ss 5.1/5.1.4:	27189234
Product description:	TS Captive nut, for thread M8, for clamping and insertion from the side
