

Connected Components Workbench Software

Design and Configuration Software

Overview

Simplify standalone machine development for multiple industries with the Connected Components Workbench™ software. As part of the Integrated Architecture® system from Rockwell Automation, the Connected Components Workbench software provides device configuration, controller programming, and integration with Human Machine Interface (HMI) editor while reducing initial machine development time and cost. The software also provides the flexibility to switch the ladder programming environment between default IEC and Logix themes. This is available in both Standard and Developer Editions.

Advantages

- Reduce development time with one software to configure multiple devices for standalone machines
- Connect to devices with ease through various serial and network options
- Simplify programming process with sample code, user-defined functions (UDFs) and user-defined function blocks (UDFBs)
- Scale controllers and applications with converter tool and copy/paste feature

Configure

Program

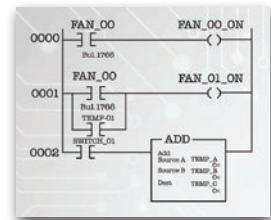
Visualize

Latest release for Connected Components Workbench Software

- Shorten Micro800™ controller programming time by entering and modifying ladder rungs quickly using similar workflows as RSLogix 500® and Studio 5000 Logix Designer® software
- Search for and add instructions with ease using Instruction Toolbar
- Share code between Connected Components Workbench™ and Studio 5000 Logix Designer software using copy and paste
- Program in your preferred environment by switching instruction names between default IEC and Logix themes
- Design and debug application code in a controlled environment using Micro800 Simulator
- Capture, view and analyze real-time data with PowerFlex® drives and Micro800 Trending
- Perform simple object animation with PanelView™ 800 DesignStation

Scalability and Reusability At-A-Glance

RSLogix™ 500
Software



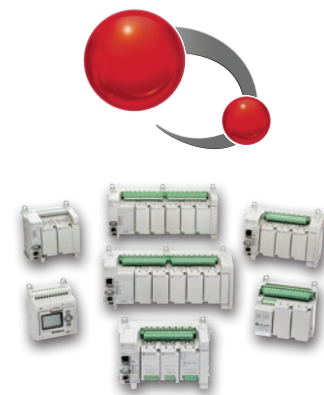
MicroLogix™
Controllers

Copy/Paste

OR

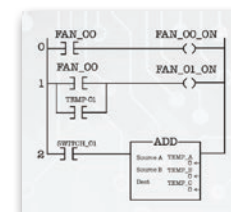
Converter
Tool

**Connected
Components
Workbench™**
Software



Micro800
Controllers

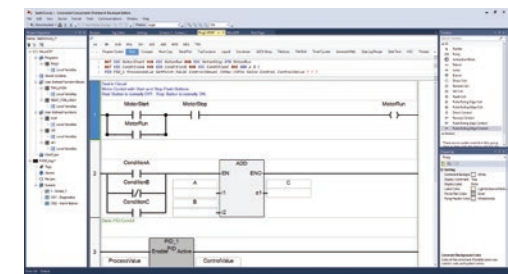
Copy/Paste



CompactLogix™ 5370
Controller

Easy to Program

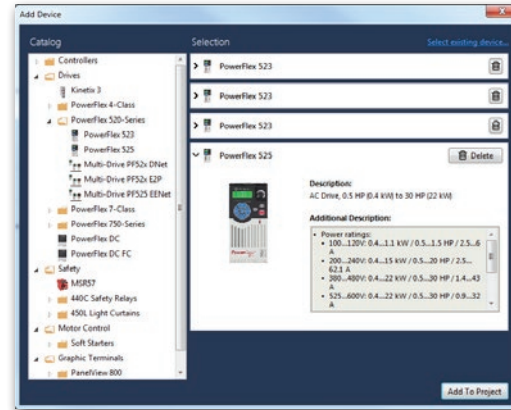
- Program Micro800 controllers using Ladder Diagram, Function Block Diagram and Structured Text editors that support symbolic addressing
- Flexibility to switch the ladder programming environment between IEC and Logix themes
- Standard PLCopen® motion instructions to simplify Pulse Train Output (PTO) axis programming
- Value-add through sample code from Rockwell Automation and partners via UDFs and UDFBs
- Cross-reference browser saves time with automatic deleting of unused variables and automatic renaming of variables throughout the project
- Supports Open Socket programming for communication to Ethernet devices



Minimize Start-up Time with Connected Components Workbench Software

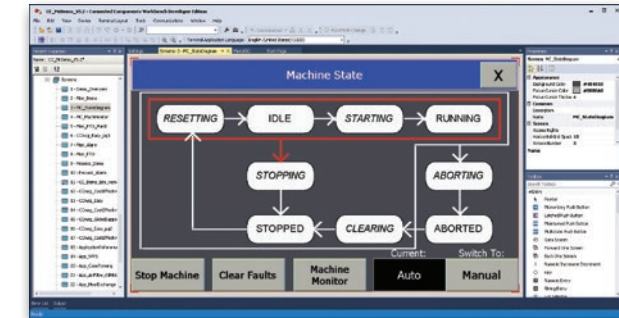
Easy to Configure

- Common, simple configuration helps reduce development time
- Wizards to guide through the configuration of PowerFlex® drives
- Connectivity to devices using USB, EtherNet/IP™ and Serial communications
- Configure safety relays using built-in function blocks instead of wiring (Guardmaster® 440C-CR30)
- Update device firmware from project organizer without ControlFLASH™

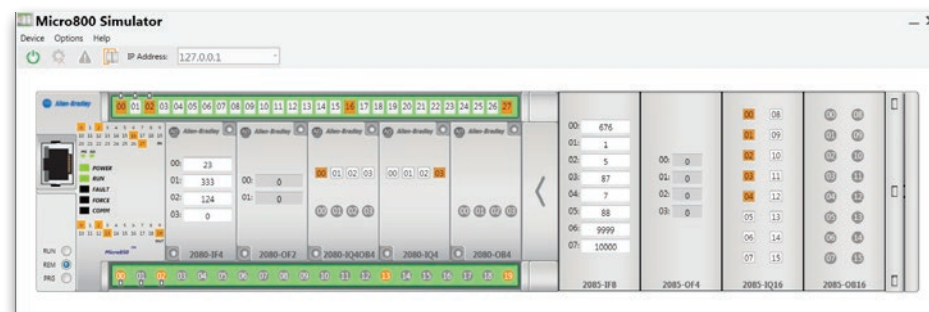


Easy to Visualize

- PanelView™ 800 graphic terminal application development is integrated with Micro800™ controller in single project
- Micro800 controller variable names can be directly referenced by HMI tags, which result in less complexity and time-saving benefits
- Map PanelView 800 tags to Micro800 controllers and CompactLogix™ 5370 controllers (L5X file) using Import function
- Simple object animation by using tags to determine the size and location on the screen



Micro800 Simulator: Code Development and Test Without Hardware



Supports the Following Devices including Safety

- Micro800 Controllers
 - Micro870® Controller with AC Input **NEW**
- PanelView 800 Graphic Terminals
- PowerFlex Drives
- SMC™ Soft Starters
- Kinetix® Component Servo Drives
- E200™ Electronic Overload Relay **NEW**
- Guardmaster 440C-CR30 Software Configurable Safety Relay
- Guardmaster Speed Monitoring Safety Relay
- GuardShield™ 450L Light Curtain

Hardware Requirements

To use Connected Components Workbench™ software effectively, your personal computer must meet the following hardware requirements:

	Minimum Requirements
Processor	Intel Core i5 Standard Power processor (i5-3xxx) or equivalent
RAM Memory	8 GB
Hard Disk Space	20 GB free
Optical Drive	DVD-ROM
Pointing Device	Any Microsoft Windows® compatible pointing device

Software Requirements

The latest release supports the following operating systems, versions and service packs:

Supported Operating System	Tested Editions
Windows 10*	32-bit and 64-bit
Windows Server 2016*	64 bit
Windows 8.1*	32-bit and 64-bit
Windows Server 2012 R2*	64-bit
Windows Server 2012*	64-bit
Windows 7 SP1	32-bit and 64-bit
Windows Server 2008 R2 SP1	64-bit

* Requires .NET Framework 3.5 SP1 to be installed.

Standard Edition

Common, easy-to-use configuration and programming tool for a Rockwell Automation® Micro Control System. Includes demo version of Micro800™ Simulator.

Developer Edition

Standard plus additional features including full version of Micro800 Simulator and Archive Manager, as well as extensive Micro800 controller programming capabilities for an enhanced user experience.

How to Obtain

- Standard Edition
 - Free download through rok.auto/ccw
- Developer Edition
 - Contact your local distributor or Rockwell Automation Sales for pricing

Allen-Bradley, CompactLogix, Connected Components Workbench, ControlFLASH, E200, Guardmaster, GuardShield, Integrated Architecture, Kinetix, Micro800, Micro870, MicroLogix, PanelView, PowerFlex, Rockwell Automation, Rockwell Software, RSLogix 500, SMC, Studio 5000 Logix Designer and TechConnect are trademarks of Rockwell Automation, Inc. EtherNet/IP is a trademark of the ODVA. Trademarks not belonging to Rockwell Automation are property of their respective companies.

www.rockwellautomation.com

Power, Control and Information Solutions Headquarters

Americas: Rockwell Automation, 1201 South Second Street, Milwaukee, WI 53204-2496 USA, Tel: (1) 414.382.2000, Fax: (1) 414.382.4444
Europe/Middle East/Africa: Rockwell Automation NV, Pegasus Park, De Kleetlaan 12a, 1831 Diegem, Belgium, Tel: (32) 2 663 0600, Fax: (32) 2 663 0640
Asia Pacific: Rockwell Automation, Level 14, Core F, Cyberport 3, 100 Cyberport Road, Hong Kong, Tel: (852) 2887 4788, Fax: (852) 2508 1846

Publication 9328-PP001D-EN-P - March 2019
Supersedes Publication 9328-PP001C-EN-P - July 2018

Copyright © 2019 Rockwell Automation, Inc. All Rights Reserved.