

Series AS

Series

Series	Applicable tube O.D.											Applicable cylinder bore size			
	Metric size						Inch size					(inch)		(mm)	
	2	3.2	4	6	8	10	12	1/8"	5/32"	1/4"	5/16"	3/8"	1/2"		
AS1002F	●							●	●	●				1/4"	2.5, 4, 6
AS2002F		●	●					●	●					1/4", 3/8", 5/8", 3/4"	6, 10, 16, 20
AS2052F			●	●					●	●				3/4", 1", 1 1/4", 1 1/2"	20, 25, 32, 40
AS3002F			●	●	●	●			●	●				1 1/2", 2", 2 1/2"	40, 50, 63
AS4002F					●	●					●	●		2 1/2", 3 1/4", 4"	63, 80, 100

Specifications

Fluid	Air
Proof pressure	218 psi (1.5 MPa) 152 psi <small>Note 1)</small> (1.05 MPa <small>Note 1)</small>)
Max. operating pressure	145 psi (1 MPa) 102 psi <small>Note 1)</small> (0.7 MPa <small>Note 1)</small>)
Min. operating pressure	15 psi (0.1 MPa)
Ambient and fluid temperature	23 to 140°F (-5 to 60°C) (No freezing)
Applicable tube material <small>Note 2)</small>	Nylon, Soft nylon, Polyurethane

Note 1) In case of AS1002F-02

Note 2) Use caution at the max. operating pressure when using soft nylon or polyurethane tubing.
(Refer to pages 371 and 372 of Best Pneumatics Vol. 6)

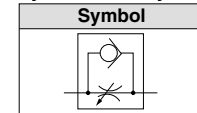
Note 3) Brass parts are all electroless nickel plated.

Flow Rate and Flow Coefficient

Series	AS1002F	AS2002F	AS2052F	AS3002F	AS4002F
Tube O.D.	Metric size	ø2, ø3.2, ø4, ø6	ø4, ø6	ø6, ø8	ø6, ø8, ø10, ø12
	Inch size	—, ø1/8", ø5/32", ø1/4"	ø5/32", ø1/4"	—, ø1/4", ø5/16"	ø1/4", ø5/16", ø3/8", ø3/8", ø1/2"
Controlled flow (Free flow)	Flow rate (scfm)	0.7, 3.5	4.6, 8.1	10.2, 16.3	13.8, 23.3, 32.5, 55.8
	Cv	0.02, 0.08	0.11, 0.19	0.25, 0.39	0.33, 0.56, 0.78, 0.78, 1.33

Note) Flow rate values are measured at 73 psi and 70°F.

Flow Direction Symbol on Body



How to Order



AS 400 2F - 12 - [] - []

Body size	
100	M3, M5 standard
200	1/8 standard
205	1/4 standard
300	3/8 standard
400	1/2 standard

Made to Order	
Metric size	Inch size
02	ø1/8"
23	ø3.2"
04	ø4"
06	ø6"
08	ø8"
10	ø10"
12	ø12"



Lock nut option	
Nil	Hexagon lock nut
J	Round lock nut

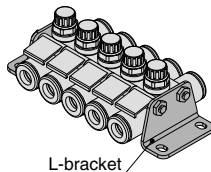
With one-touch fittings

* Use ø1/8" tube.

Options

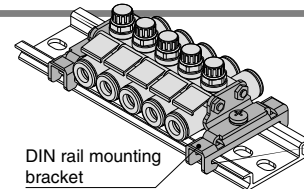
L-bracket

Part no.	Applicable series
AS-12L	AS1002F-02
AS-10L	AS1002F
AS-20L	AS2002F
AS-25L	AS2052F
AS-30L	AS3002F
AS-40L	AS4002F



DIN rail mounting bracket

Part no.	Applicable series
AS-10D	AS1002F
AS-20D	AS2002F
AS-25D	AS2052F
AS-30D	AS3002F
AS-40D	AS4002F



* Bracket for AS1002F-02 is not available.

* Prepare DIN rail by user.

Part no. list of threaded stud kit for manifold

Model		4 stations	6 stations	8 stations	10 stations
Metric size	Inch size				
AS1002F-02	—	AS-31B	AS-32B	AS-33B	AS-34B
AS1002F-23	AS1002F-01	AS-32B	AS-34B	AS-33B	AS-34B
AS1002F-04	AS1002F-03			AS-35B	AS-36B
AS1002F-06	—			AS-36B	AS-37B
—	AS1002F-07			AS-38B	AS-38B
AS2002F-04	AS2002F-03	AS-32B	AS-34B	AS-35B	AS-37B
AS2002F-06	—			AS-36B	AS-38B
—	AS2002F-07			AS-36B	AS-38B
AS2052F-06	—			AS-36B	AS-38B
AS2052F-08	AS2052F-09	AS-41B	AS-42B	AS-44B	AS-45B
AS3002F-06	—	AS-42B	AS-44B	AS-45B	AS-47B
—	AS3002F-07			AS-46B	
AS3002F-08	AS3002F-09			AS-46B	
AS3002F-10	—			AS-46B	
—	AS3002F-11			AS-46B	
AS3002F-12	—			AS-46B	
AS4002F-10	—	AS-43B	AS-45B	AS-47B	AS-48B
—	AS4002F-11				
AS4002F-12	—				
—	AS4002F-13	AS-43B	AS-45B	AS-47B	AS-48B

Details of threaded stud kit for manifold

Part no.	Threaded stud		Accessories							
	Length (mm)	pcs.	Hexagon nut	pcs.	Flat washer	pcs.				
AS-31B	38	2	M3	4	M3	4				
AS-32B	62	2								
AS-33B	72	2								
AS-34B	90	2								
AS-35B	104	2								
AS-36B	114	2								
AS-37B	135	2								
AS-38B	140	2								
AS-41B	78	2					M4	4	M4	4
AS-42B	111	2								
AS-43B	119	2								
AS-44B	147	2								
AS-45B	179	2								
AS-46B	191	2								
AS-47B	236	2								
AS-48B	277	2								

* Precautions when options are ordered

Threaded studs for manifold are not included when L-bracket and DIN rail mounting bracket are ordered. Please order them according to the number of stations.

Ex.) AS2002F-04	When connecting 4 pcs. and mounting L-brackets on both sides	AS2002F-044 pcs.
		AS-20L2 pcs.
		AS-32B1 pc.