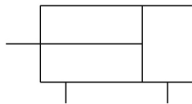


C(D)QM, Compact Cylinder, Guide Rod Type CDQMB20-30

Data Sheet

The CQM is a compact cylinder integrated with a guide rod and plate. The series is available in 12, 16, 20, 25, 32, 40, 50, 63, 80 and 100mm bore sizes with the same mounting dimensions as the CQ2. The guide rod and plate allow work to be directly mounted. The CQM series offers 4 times the lateral load resistance of the CQ2K and non-rotating accuracy of $\pm 0.2^\circ$.

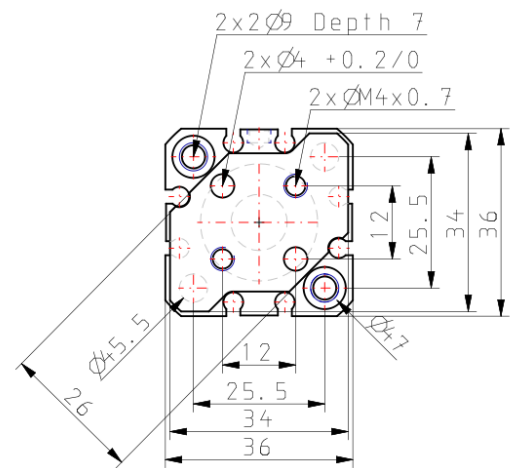
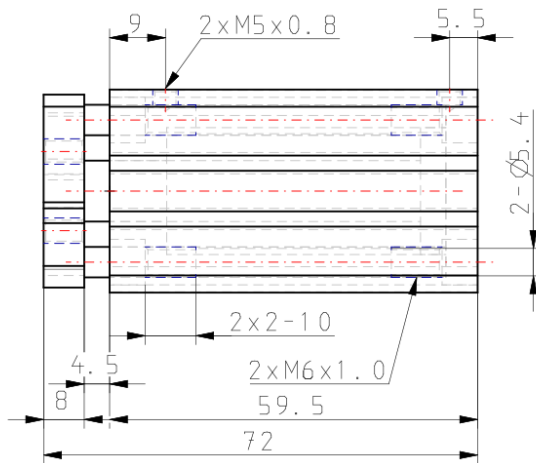


Double-acting, single-rod cylinder

Standard Specifications

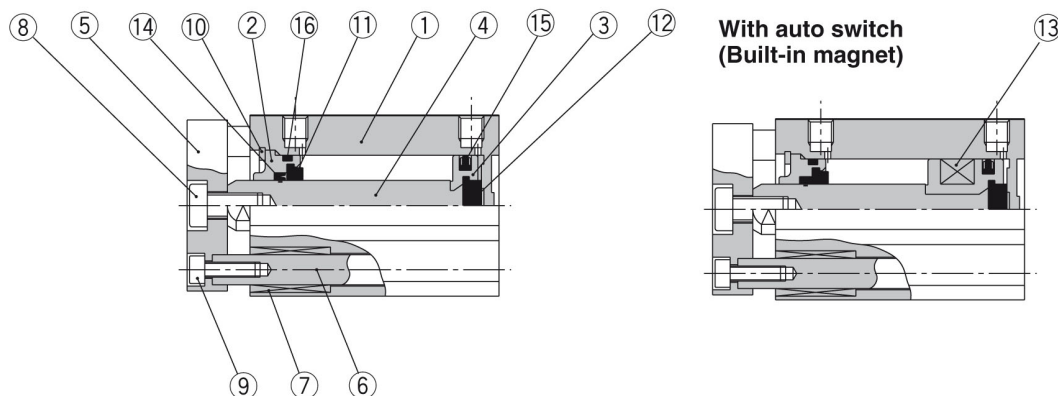
Magnet	Magnet
Mounting	Standard
Bore Size	20mm
Port Thread	ø12-ø25); Rc (ø32-ø100
Stroke	30mm
Auto Switch	No Switch
Lead Wire or Prewired Connector	Or None in the Case of No Switch
Number	Or None in the Case of No Switch
Pressure medium	Air
Maximum temperature of pressure medium	70 °C
Maximum temperature of pressure medium with magnet	60 °C
Minimum temperature of pressure medium	-10 °C (with no freezing)
Minimum temperature of pressure medium with magnet	-10 °C (with no freezing)
Maximal operating pressure	1.0 MPa
Minimum operating pressure	0.1 MPa
Proof pressure	1.5 MPa
Maximum ambient temperature	70 °C
Maximum ambient temperature with magnet	60 °C
Minimum ambient temperature	-10 °C (with no freezing)
Minimum ambient temperature with magnet	-10 °C (with no freezing)
Number of pneumatic connections	2 pcs.
Pneumatic input connection	M5
Pneumatic exhaust connection	M5
Theoretical cylinder force, advance stroke (at 0.5 MPa)	157 N
Theoretical cylinder force, return stroke (at 0.5 MPa)	118 N
Maximum piston speed	500 mm/s
Type of cushioning	Rubber bumper on both ends
Usable tubing material	PU
Subfamily	CQM, Single Rod with bumper, Double Acting, Compact Cylinder/Guide Rod Type
Weight	0.197 kg

Dimensions



Constructions

ø12 to ø25



Component Parts

No.	Description	Material	Note
1	Cylinder tube	Aluminium alloy	Hard anodised
2	Collar	Aluminium alloy	Anodised
3	Piston	Aluminium alloy	Chromated
4	Piston rod	Stainless steel	
5	Plate	Aluminium alloy	Anodized
6	Guide rod	Stainless steel	Hard chrome plated
7	Bushing	Oil-impregnated sintered alloy	
8	Hexagon socket head cap screw	Carbon steel	Nickel plated
9	Hexagon socket head cap screw	Carbon steel	Nickel plated
10	Snap ring	Carbon tool steel	Phosphate coated
11	Bumper A	Urethan	
12	Bumper B	Urethan	
13	Magnet	—	
14	Rod seal	NBR	
15	Piston seal	NBR	
16	Gasket	NBR	

Additional information

Catalogue

[CQM_EU.pdf](#)

Related Products



D-M9NW

D-**PC, Pre-wired Connector Auto Switch



D-M9PW

D-**PC, Pre-wired Connector Auto Switch



D-M9BW

D-**PC, Pre-wired Connector Auto Switch



D-A93

A90/A93/A96, Reed Switch, Direct Mounting, Grommet, In-line



AS1201FS-M5-04

AS*2/3*1FS, Speed Controller with Indicator, Elbow & Universal Types



AS1201F-M5-04A

AS*2/3*1F-A, Speed Controller with One-touch Fitting, Push Lock, Elbow/Universal Type



SY

SY3000/5000/7000, Subplate for Single Unit New SY, IP67 Compliant



KQ2H04-M5A

KQ2H, One-touch Fitting White Color - Male Connector



TU0425B-20

TU, Polyurethane Tubing, Metric Size