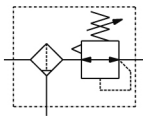


AW20(*)-B to AW60(*)-B, Filter Regulator & Filter Regulator w/Backflow Function AW20-F02BE-B

Data Sheet

This combination Filter/ Regulator minimizes space and piping by integrating the 2 units into one. Standard features include a relieving regulator, which can be quickly locked by pushing down on the adjustment knob. There are many options, which include gauges, auto-drain, metal bowl and covers, different set pressures, etc. The AW-B is part of the family of modular air preparation units and can be combined with other similar sized products. This series is available in 3 body sizes with piping from 1/8 to 3/4 in Rc, NPT or G thread types. Integrated filter and regulator units save space and require less piping. With the backflow function it incorporates a mechanism to exhaust the air pressure in the outlet side reliably and quickly.

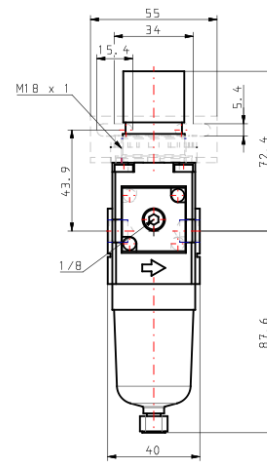
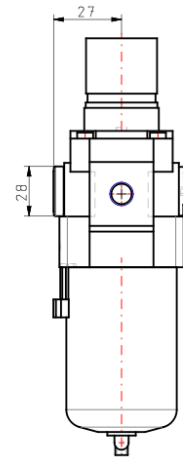
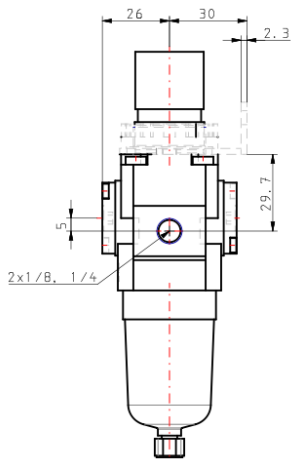


Air combination, Air filter and regulator

Standard Specifications

Made to Order 1	None
Body Size	20
Backflow Function	None
Thread	G
Port	1/4
Option	B + E
Semi-standard 1	Standard
Semi-standard 2	Standard
Made to Order 2	None
Pressure medium	Air
Maximum temperature of pressure medium	60 °C
Minimum temperature of pressure medium	-5 °C [without condensation]
Maximal operating pressure	1.0 MPa
Proof pressure	1.5 MPa
Maximum ambient temperature	60 °C
Minimum ambient temperature	-5 °C [without condensation]
Conform to the European RoHS Directive	Conform
Approvals	No need
Bowl Material	Polycarbonate
Bowl Guard	Semi-standard (Steel)
Drain Capacity	8 cm ³
Element nominal filtration rating	5 µm
Weight	0.258 kg

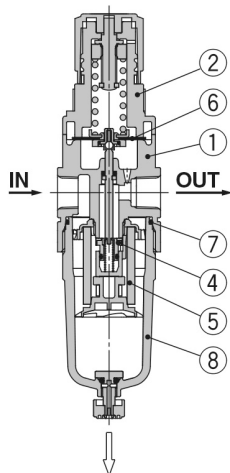
Dimensions



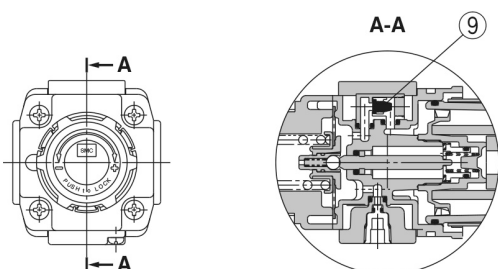
Constructions

Construction

AW20(K)-B



AW20K-B to AW60K-B (Filter Regulator with Backflow Function)



Component Parts

No.	Description	Material	Model	Colour
1	Body	Aluminium die-cast	AW20-B to AW60-B	White
2	Bonnet	Polyacetal	AW20-B to AW40-B	White
		Aluminium die-cast	AW60-B	White
3	Housing	Aluminium die-cast	AW60-B	White

Replacement Parts

No.	Description	Material	Part no.
			AW20(K)-B
4	Valve assembly	Brass, HNBR	AW20P-340AS
5	Filter element	Non-woven fabric	AF20P-060S
6	Diaphragm assembly	Weatherable NBR	AR20P-150AS
7	Bowl seal	NBR	C2SFP-260S
8	Bowl assembly *1	Polycarbonate	C2SF-A
9	Check valve assembly *3	—	AR23KP-020AS

*1 Bowl assembly includes the bowl O-ring.

Please consult with SMC separately for psi and °F unit display specifications.

*2 Bowl assembly for the AW30(K)-B to AW60(K)-B models comes with a bowl guard (Material: Polycarbonate).

*3 Check valve assembly is applicable for a filter regulator with backflow function (AW20(K)-B to AW60(K)-B) only.
 Assembly of a check valve cover, check valve body assembly and 2 mounting screws

Additional information

Catalogue	AC-B-B_EU.pdf
Installation Manuals	IM_AW_SMU06EN.pdf

Related Products



AL20-F02-A
AL10-60-A, Lubricator



VHS20-F02B
VHS20/30/40/50, Pressure Relief 3 Port Valve w/Locking Holes (Single Action)