

# PanelView Plus 7 Operator Interfaces



Graphic Terminals Designed to Improve Performance

## Features and Benefits

### Increased Scalability

- Form factor includes sizes from 4" to 19" with wide screen options to meet a variety of application needs
- Using less than 2-inch cabinet depth saves space and reduces cost

### Improved Performance

- Windows CE 6.0 standard features, including email and text notification and secure FTP server
- Embedded Ethernet ports that support device-level ring, linear or star network topologies
- Embedded PDF Viewer displays user manuals and installation guides

### Mobile Enabled

- Monitor applications from a secure remote location with VNC connectivity
- Email and texting capabilities provide real-time notifications

### Enhanced Development Experience

- Faceplates and Add-on Instructions can save 50%-90% of complex screen development time
- Use an SD card to copy and restore the operator interface applications
- Increase operator productivity by creating intuitive interface with gradient shading and PNG support



The PanelView™ Plus 7 operator interfaces form a comprehensive portfolio, with Standard and Performance models that provide operators at the machine level a view into the control system. The use of FactoryTalk® View Machine Edition helps simplify configuration and strengthen your Integrated Architecture solution.

The operator terminals are ideal for applications that require monitoring, controlling and displaying information in dynamic ways, where operators must quickly understand machine status and make better decisions.

### Performance Models

Offered in six sizes from 7" to 19" with widescreen options, the PanelView Plus 7 Performance is designed for all applications, ranging from small to complex machines. They include high performing processors, increased memory options and embedded Ethernet ports that support device-level ring, linear, or star network topologies. Additionally, the PanelView Plus 7 Performance models include enhanced features including an RDP client that creates a thin client terminal and web browser ActiveX functionality to embed HTML pages inside the application.

### Standard Models

With sizes ranging from 4" to 15", the PanelView Plus 7 Standard terminals provide basic features, ideal for small and mid-size machine applications. They include single or DLR Ethernet port options for network connectivity and ATEX Zone 2/22 certification. FactoryTalk View Machine Edition 11.0 software provides connection to one controller, up to 100 screens (50 replace and 50 on-top screens), and up to 500 alarms.

### ArmorView Plus 7 Model

Available in a 12.1" size, the ArmorView Plus 7 graphic terminal is a fully enclosed panel. It features IP66 protection enabling a low-cost cabinet free HMI solution. Convenience features include a space and cost saving design that eliminates the need for an additional enclosure, separate push buttons, and low installation overhead. This HMI is easily connected and wiring is minimized by Ethernet I/O communication. This terminal offers options to increase flexibility, such as buttons and switches that can be individually customized to meet the needs of each machine, and orientation mount options from either a swing arm, pedestal, or fixed surface.

# PanelView Plus 7 Operator Interfaces

RDP client feature creates thin client application

Web browser ActiveX embeds HTML pages inside application

PERFORMANCE MODEL



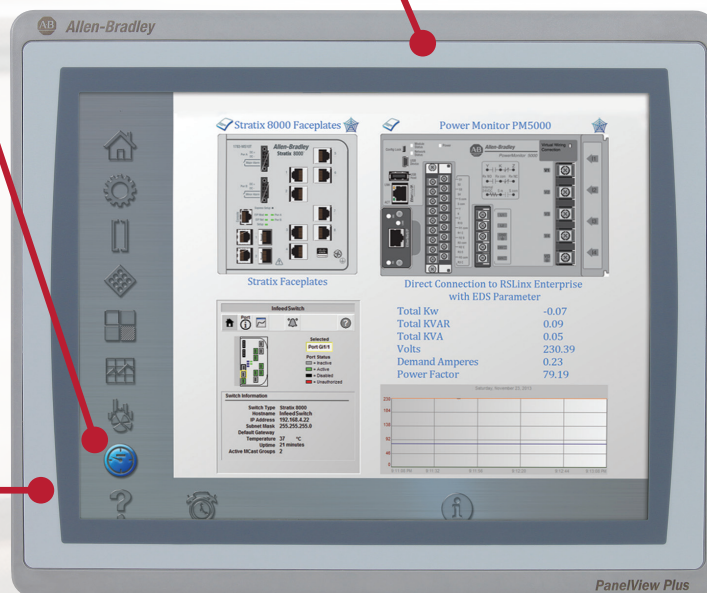
SD storage card slot for data storage, data logging, recipe management and terminal replication



USB ports for printer, RFID reader and web camera support

Embedded PDF Viewer shows user manuals and installation guides

Faceplates and Add-on Instructions saves time on complex screen development time



ATEX 2/22 certification

STANDARD MODEL

## FactoryTalk View Machine Edition



New installation clamps provide fast and simple terminal installation and removal



Single or DLR-embedded Ethernet ports for connectivity in Standard terminals and embedded Ethernet port with DLR in Performance terminals



### Quick and Easy Terminal Copy and Restore

Use an SD card to quickly create copies of a terminal to reduce your time to market or restore a terminal.

- Operating system
- Network configuration and terminal settings
- FactoryTalk® View Machine Edition (ME) runtime file
- Datalogs and Recipe files



Offers simplified project maintenance with improved handling of multiple FactoryTalk View Machine Editions applications on same terminal

- Added domain authentication options
- Manages security configuration within a running application
- Includes improved audit trail
- Provides recipe management, multi-language capabilities and intuitive animations



### Fast Troubleshooting with Real Time Diagnostics

- Capture terminal environmental data at runtime such as temperature, load and battery voltage
- Mobile ready with VNC support and FactoryTalk Viewpoint

## PanelView Plus 7 Standard and Performance Specifications

For up-to-date specifications, accessories, manuals and service information, visit:

<http://ab.rockwellautomation.com/Graphic-Terminals>

	PanelView Plus 7 Standard	PanelView Plus 7 Performance	ArmorView Plus 7
Display Size	4 inch display (110 x 135 mm) 6 inch display (152 x 176 mm) 7 inch display (170 x 212 mm) 9 inch display (190 x 280 mm) 10 inch display (252 x 297 mm) 12 inch display (240 x 340 mm) 15 inch display (318 x 381 mm)	7 inch display (170 x 212 mm) 9 inch display (190 x 280 mm) 10 inch display (252 x 297 mm) 12 inch display (240 x 340 mm) 15 inch display (318 x 381 mm) 19 inch display (411 x 485 mm)	12 inch display (240 x 340 mm) brandless only
Display Type	Color TFT LCD, 18-Bit Color Graphics		
Operating System	Microsoft Windows CE 6.0 R3		
Open Architecture	Yes		
CPU	ARM – 1.0 GHz	X86 – 1.3 GHz	
RAM	512 MB		
Internal Storage	512 MB storage, 80 MB nonvolatile storage for applications		
Real-time clock	Yes, battery-backed time clock timestamps critical data. Accuracy +/-2 minutes per month		
Environmental Operating Temperature	0...55 °C (32...131 °F)		0...45 °C (32...113 °F)
Ratings	NEMA 12, 13, 4X, IP54, IP66		NEMA 12, 13, 4/4X*, IP66 *Configuration specific
Certifications	ATEX Zone 2, ATEX Zone 22; cULus listed; Class I, Div 2, Groups A,B,C,D, T4; Class II, Div 2, Groups F, G; Class III; Class I, Zone 2, Groups 11C T4; KCC; CE (EMC); CE (LVD); RoHS; EAC; INMETRO	cULus listed; Class I, Div 2, Groups A,B,C,D, T4; Class I, Zone 2, Groups 11C T4; KCC; CE (EMC); CE (LVD); RoHS	cULus listed; KCC; CE (EMC); CE (LVD); RoHS
Conformally Coated	–	Available for all displays	–
Stainless Steel	–	Available for 9 inch and 12 inch displays	–
SD	1 x SDHC		–
USB	1 USB-A and 1 USB-B (v2.0 high speed)	2 USB-A and 1 USB-B (v2.0 high speed)	
Ethernet	Either 1 RJ45 10/100 MB port or 2 10/100Base-T Auto MDI/MDI-X Ethernet ports that support DLR, linear or star network topologies	2 10/100Base-T, Auto MDI/MDI-X Ethernet ports that support DLR (device-level ring), linear or star network topologies	
Input Power	DC (18...30V DC)	DC (18...30V DC) and AC (100...240V AC)	DC (18...30V DC)
Standard Software	FactoryTalk Machine Edition 7.0 or later, FactoryTalk Viewpoint, PDF viewer, ActiveX controls, Remote terminal control, FTP server		

Allen-Bradley, CompactLogix, FactoryTalk, Integrated Architecture, PanelView, and Rockwell Software are trademarks of Rockwell Automation, Inc. Trademarks not belonging to Rockwell Automation are property of their respective companies.

[www.rockwellautomation.com](http://www.rockwellautomation.com)

### Power, Control and Information Solutions Headquarters

Americas: Rockwell Automation, 1201 South Second Street, Milwaukee, WI 53204-2496 USA, Tel: (1) 414.382.2000, Fax: (1) 414.382.4444

Europe/Middle East/Africa: Rockwell Automation NV, Pegasus Park, De Kleetlaan 12a, 1831 Diegem, Belgium, Tel: (32) 2 663 0600, Fax: (32) 2 663 0640

Asia Pacific: Rockwell Automation, Level 14, Core F, Cyberport 3, 100 Cyberport Road, Hong Kong, Tel: (852) 2887 4788, Fax: (852) 2508 1846