

## MOUNTING INSTRUCTIONS FOR BULLETIN 800H LOCKING COVER ATTACHMENT CATALOG NO. 800H-N140

When used with a proper padlock (shackle diameter 3/16" minimum, 5/16" maximum), this Locking Cover is for use with Allen-Bradley Bulletin 800H, NEMA Type 4 & 4X selector switches, or Bulletin 800T, NEMA Type 13 standard knob selector switches, or Bulletin 800T, NEMA Type 13 push-pull switches. It is designed to guard against unauthorized operation of these switches.



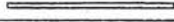
If a pre-printed (printed both sides) legend plate is used, before mounting the locking cover, remove the protective backing from the legend plate and install it with the adhesive side to the inside of the cover, as shown in Figure 1. (Pre-printed legend plates must be ordered separately). If the two supplied blank legend plates are to be used, write the same legend on both plates. Remove the protective backing from one legend plate and install it with the adhesive side to the inside of the cover, as shown in Figure 1. Remove the protective backing from the other legend plate and install it with the adhesive side to the outside of the cover.

To mount the Locking Cover on the switch, first unthread the mounting hardware and place the correct number of ring gaskets on the mounting bushing (see Table 1). Insert bushing through hole in panel and position base of Locking Cover over bushing with hinge at left and locating nib at top.

Open the Locking Cover and position the knob assembly of the selector switch over the end of the shaft, lining up knob indicator with shaft stop projection. Locate operator projections in shaft holes and thread mounting ring onto bushing. The ring should be tightened firmly against the Locking Cover base.

Apply liquid soap or wetted bar soap to the lip of the NEMA Type 4X rubber mounting ring before assembling to bushing and tighten ring to such an extent that a slight flaring is apparent on the rubber lip. See Figure 2. Mounting wrench, Catalog No. 800T-N3, will facilitate proper mounting of both rubber mounting ring and octagonal mounting ring.

After the mounting ring of the push-pull switch has been tightened firmly against the Locking Cover base, thread operator knob onto lens bushing and tighten firmly to maintain NEMA Type 13 oiltight seal. The push-pull knob must be pushed in for the Locking Cover to close properly. See Figure 3.

Gaskets required for various panel thicknesses.		
16 Gauge - 1/16" (1.6)	3	
12 Gauge - 7/64" (2.8)	2	
10 Gauge - 9/64" (3.6)	1	
Panels thicker than 3/16" (4.8) must be counterbored.		

**Note:** Dimensions shown in parentheses are in millimeters.

Table 1

**Caution:** Depending on mounting dimensions to adjacent units and the types of units involved, interference may occur between the Locking Cover and/or padlock and parts of, or operation of adjacent units. Be sure to check for possible interference before installing this device.



40060-253-01 (3)  
Printed in U.S.A.

**ALLEN-BRADLEY**  
Milwaukee, Wisconsin 53204

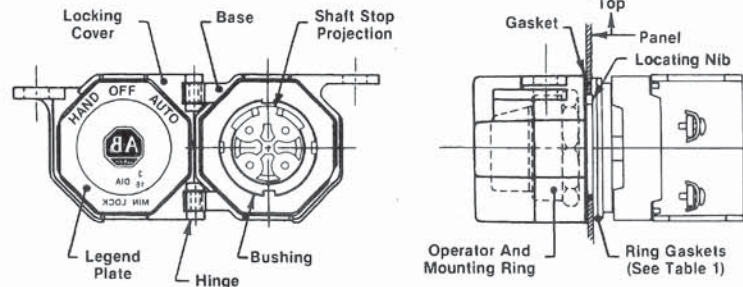


Figure 1

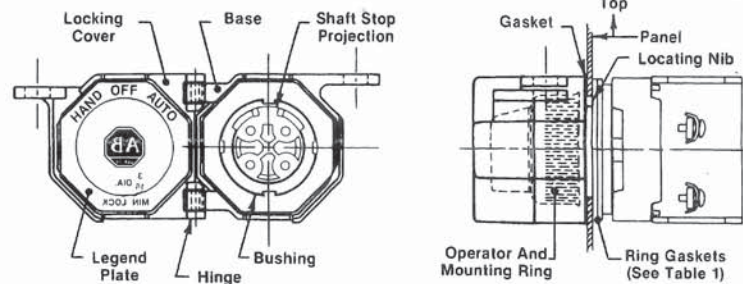


Figure 2

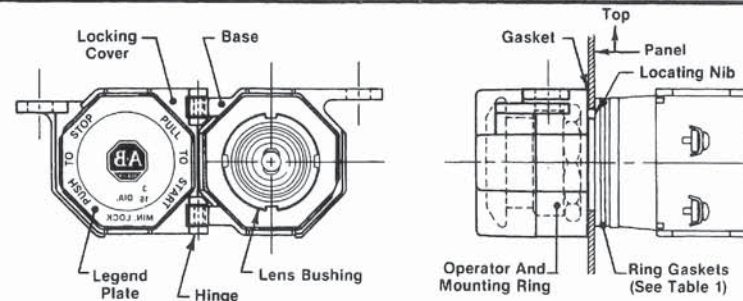


Figure 3

