

Rittal – The System.

Faster – better – everywhere.

Mounting plate for PK – PK 9550.000

Date : Jan 16, 2019

ENCLOSURES

POWER DISTRIBUTION

CLIMATE CONTROL

IT INFRASTRUCTURE

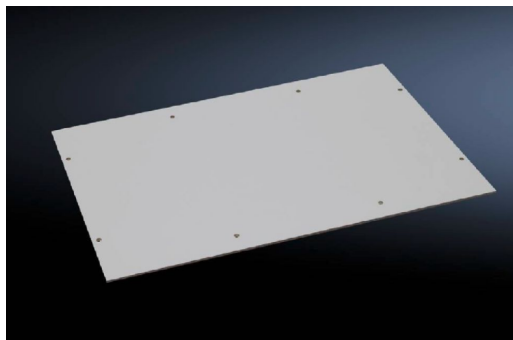
SOFTWARE & SERVICES

FRIEDHELM LOH GROUP



Mounting plate for PK – PK 9550.000

created: 16.01.2019 build on www.rittal.com/uk-en



Product description

Description:	For individual interior installation.
Material:	2.5 mm melamine phenol-coated laminated paper.
Colour:	RAL 7035
Supply includes:	Mounting plate Self-tapping assembly screws

Product features

To fit:	Enclosure type: PK Width: = 360 mm Height: = 254 mm
Mounting plate:	Width: 331 mm Height: 220 mm
Weight/pack:	1.25 kg
ETIM 5.0:	EC000213
eCl@ss 8.0/8.1:	27409216
eCl@ss 6.0/6.1:	27189234
Product description:	PK Mounting plate, WH: 331x220 mm

