

# Rittal – The System.

Faster – better – everywhere.

## **Cast aluminium enclosures GA – GA 9113.210**

Date : Jul 31, 2017

ENCLOSURES

POWER DISTRIBUTION

CLIMATE CONTROL

IT INFRASTRUCTURE

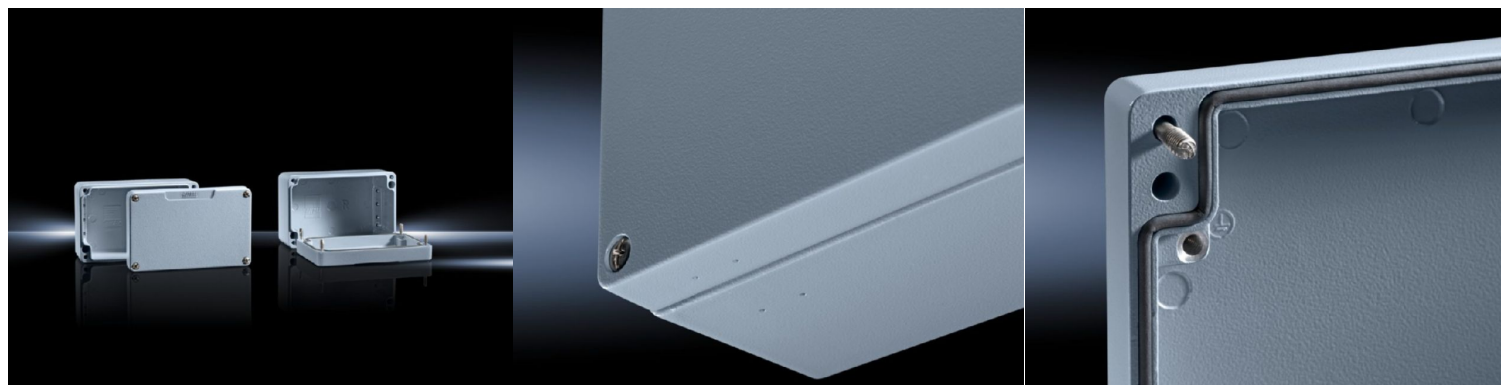
SOFTWARE & SERVICES

FRIEDHELM LOH GROUP



# Cast aluminium enclosures GA – GA 9113.210

created: 31.07.2017 build on [www.rittal.com/uk-en](http://www.rittal.com/uk-en)



## Product description

<b>Material:</b>	Enclosure: Cast aluminium Cover: Cast aluminium, all-round CR cellular rubber cord seal
<b>Surface finish:</b>	Textured paint
<b>Colour:</b>	RAL 7001
<b>Protection category IP to IEC 60 529:</b>	IP 66
<b>Protection category NEMA:</b>	NEMA 4
<b>IK Code:</b>	IK08
<b>Supply includes:</b>	Enclosure with cover Cover screws, captive Screws for attaching support rails Screw for connection of the PE conductor
<b>Product modification:</b>	From September 2016, GA housings are delivered in an optimised design Your benefit: The KL wall brackets (1590000 and 1594000) may be used for wall-mounting the GA enclosures The enclosures have a Rittal logo on the lid and carry the CE label
<b>Basic material:</b>	Cast aluminium

## Product features

<b>Dimensions:</b>	Width: 260 mm Height: 160 mm
--------------------	---------------------------------

Depth: 91 mm

<b>Packs of:</b>	1 pc(s).
<b>Weight/pack:</b>	2.08 kg
<b>EAN:</b>	4028177145443
<b>Customs tariff number:</b>	85389099
<b>ETIM 6.0:</b>	EC000261
<b>ETIM 5.0:</b>	EC000058
<b>eCl@ss 8.0/8.1:</b>	27180101
<b>eCl@ss 7.0/7.1:</b>	27180101
<b>eCl@ss 6.0/6.1:</b>	27180101
<b>eCl@ss 5.1/5.1.4:</b>	27180102
<b>Product description (long):</b>	GA Cast aluminium enclosure, WHD: 260x160x91 mm, Cast aluminum, without mounting plate, with cover
<b>Approvals</b>	
<b>Certificates:</b>	IK-Code Protection category
<b>Declarations:</b>	Declaration of conformity

2017 © Rittal Ltd UK