

Rittal – The System.

Faster – better – everywhere.

Cast aluminium enclosures GA – GA 9110.210

Date : Jul 31, 2017

ENCLOSURES

POWER DISTRIBUTION

CLIMATE CONTROL

IT INFRASTRUCTURE

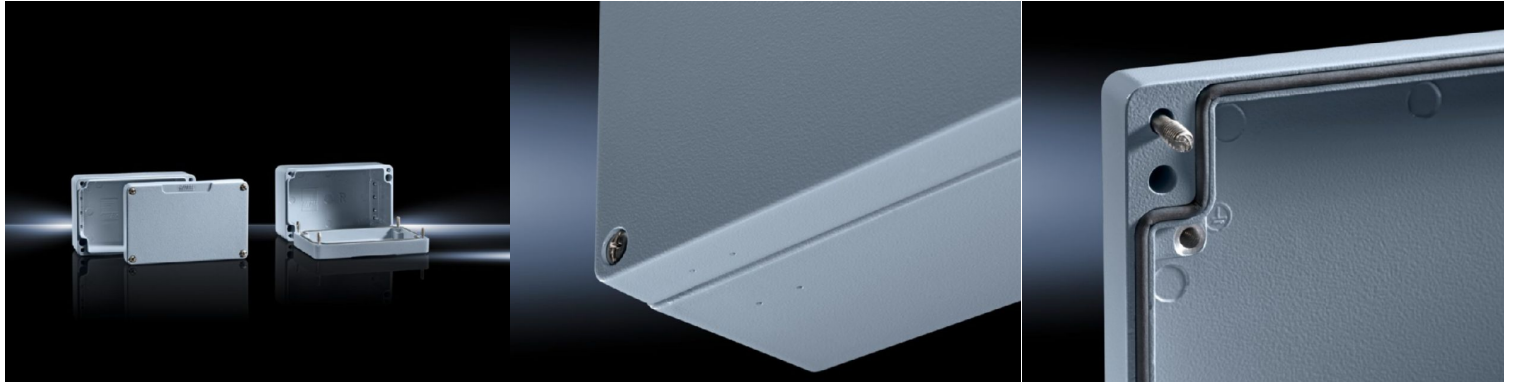
SOFTWARE & SERVICES

FRIEDHELM LOH GROUP



Cast aluminium enclosures GA – GA 9110.210

created: 31.07.2017 build on www.rittal.com/uk-en



Product description

Material:	Enclosure: Cast aluminium Cover: Cast aluminium, all-round CR cellular rubber cord seal
Surface finish:	Textured paint
Colour:	RAL 7001
Protection category IP to IEC 60 529:	IP 66
Protection category NEMA:	NEMA 4
IK Code:	IK08
Supply includes:	Enclosure with cover Cover screws, captive Screws for attaching support rails Screw for connection of the PE conductor
Product modification:	From September 2016, GA housings are delivered in an optimised design Your benefit: The KL wall brackets (1590000 and 1594000) may be used for wall-mounting the GA enclosures The enclosures have a Rittal logo on the lid and carry the CE label
Basic material:	Cast aluminium

Product features

Dimensions:	Width: 220 mm Height: 120 mm
--------------------	---------------------------------

Depth: 91 mm

Packs of:	1 pc(s).
Weight/pack:	1.56 kg
EAN:	4028177145412
Customs tariff number:	85389099
ETIM 6.0:	EC000261
ETIM 5.0:	EC000058
eCl@ss 8.0/8.1:	27180101
eCl@ss 7.0/7.1:	27180101
eCl@ss 6.0/6.1:	27180101
eCl@ss 5.1/5.1.4:	27180102
Product description (long):	GA Cast aluminium enclosure, WHD: 220x120x91 mm, Cast aluminum, without mounting plate, with cover
Approvals	
Certificates:	IK-Code Protection category
Declarations:	Declaration of conformity

2017 © Rittal Ltd UK