

# Rittal – The System.

Faster – better – everywhere.

## ► Component shelf, static installation for TS, SE, PC, IW, prepared for fan expansion kit – PC 8800.900

Date : Sep 11, 2018

ENCLOSURES

POWER DISTRIBUTION

CLIMATE CONTROL

IT INFRASTRUCTURE

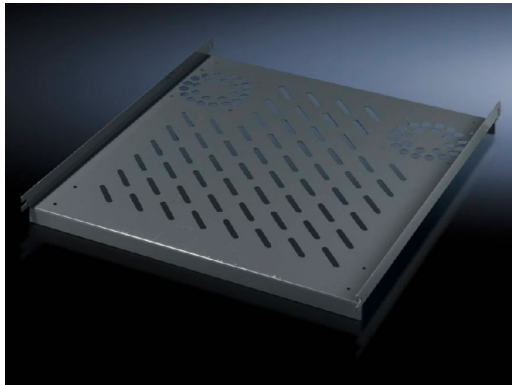
SOFTWARE & SERVICES

FRIEDHELM LOH GROUP



# Component shelf, static installation for TS, SE, PC, IW, prepared for fan expansion kit – PC 8800.900

created: 11.09.2018 build on [www.rittal.com/uk-en](http://www.rittal.com/uk-en)



## Product description

**Description:** Simply locate into 4 pre-fitted screws and secure.

**Material:** Sheet steel

**Colour:** RAL 7015

**Supply includes:** Assembly parts

**Note:** For enclosures without mounting plate

## Product features

**To fit:** Enclosure type: TS  
Enclosure type: SE  
Enclosure type: PC  
Enclosure type: IW  
Width: = 600 mm  
Depth: = 600 mm  
Note: For enclosures without mounting plate

**Installation options:** On the vertical TS, SE enclosure section

**Support area:** Width: 507 mm  
Depth: 550 mm

**Load capacity:** 40 kg surface load, static

**Packs of:** 1 pc(s).

<b>Weight/pack:</b>	4.6 kg
<b>EAN:</b>	4028177263086
<b>Customs tariff number:</b>	94039010
<b>ETIM 6.0:</b>	EC002620
<b>ETIM 5.0:</b>	EC002620
<b>eCl@ss 8.0/8.1:</b>	27189261
<b>eCl@ss 7.0/7.1:</b>	27189261
<b>eCl@ss 6.0/6.1:</b>	27189261
<b>eCl@ss 5.1/5.1.4:</b>	27189218
<b>Product description (long):</b>	PC Component shelf, static installation, for TS, PC, IW, prepared for fan expansion kit, for WD: 400x600 mm
<b>Approvals</b>	
<b>Certificates:</b>	EAC