

# Rittal – The System.

Faster – better – everywhere.

## ► Base/plinth trim panels, side, 100 mm for base/plinth system VX, sheet steel – VX 8640.030

Date : Jun 30, 2021

ENCLOSURES

POWER DISTRIBUTION

CLIMATE CONTROL

IT INFRASTRUCTURE

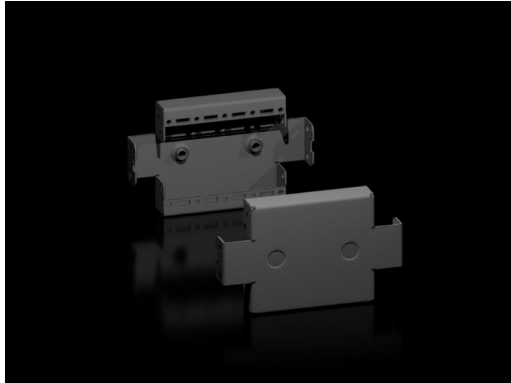
SOFTWARE & SERVICES

FRIEDHELM LOH GROUP



# Base/plinth trim panels, side, 100 mm for base/plinth system VX, sheet steel – VX 8640.030

created: 30.06.2021 build on www.rittal.com/uk-en



## Product description

**Description:** To finish off a base/plinth unit at the sides and for additional stability, or for the interior installation of bayed base/plinths. One 200 mm high or two 100 mm high trim panels may optionally be fitted on 200 mm high base/plinths.

**Material:** Sheet steel

**Colour:** RAL 9005

**Supply includes:** Assembly parts

## Product description

**To fit:** Depth: = 300 mm

**Dimensions:** Height: 100 mm

**Packs of:** 2 pc(s).

**Weight/pack:** 0.61 kg

**Copper weight (kg per piece):** 0

**EAN:** 4028177958920

**Customs tariff number:** 94039010

**ETIM 7.0:** EC000721

---

**ETIM 6.0:** EC000721

---

**eCl@ss 8.0/8.1:** 27182003

---

**eCl@ss 6.0/6.1:** 27182003

---

**Product description:** VXBase/plinth trim panel, side, H: 100 mm, for D: 300 mm, sheet steel

---

## **Approvals**

---

**Approvals:** UL + C-UL

---