

Rittal – The System.

Faster – better – everywhere.

► Support rail 65 x 42 mm for TS, SE – TS 8612.980

Date : Sep 11, 2018

ENCLOSURES

POWER DISTRIBUTION

CLIMATE CONTROL

IT INFRASTRUCTURE

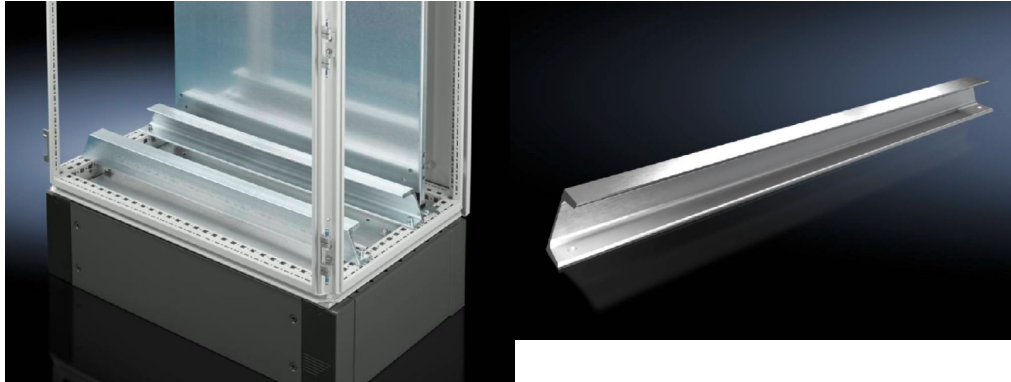
SOFTWARE & SERVICES

FRIEDHELM LOH GROUP



Support rail 65 x 42 mm for VX, TS, SE – TS 8612.980

created: 11.09.2018 build on www.rittal.com/uk-en



Product description

Description: For heavy installed equipment such as base isolators or transformers.

Applications: For heavy assemblies up to 5000 N per support rail.

Material: Steel

Surface finish: Zinc-plated

Supply includes: Assembly parts

Note: Permissible static load: 10000 N per enclosure

Product features

To fit: Enclosure type: TS
Enclosure type: SE
Width: = 800 mm

Installation options: On the inner mounting level, on the enclosure section

Packs of: 2 pc(s).

Weight/pack: 10.43 kg

EAN: 4028177522886

Customs tariff number: 73269098

ETIM 6.0:	EC001285
ETIM 5.0:	EC001285
eCI@ss 8.0/8.1:	27189234
eCI@ss 7.0/7.1:	23159101
eCI@ss 6.0/6.1:	23159101
eCI@ss 5.1/5.1.4:	27189250
Product description (long):	TS Support rail 65 x 42 mm, for TS, SE, for W: 800 mm
Approvals	
Certificates:	EAC