

# Rittal – The System.

Faster – better – everywhere.

## ► Component shelf, pull-out for TS, SE, PC, IW – IW 6902.960

Date : Feb 21, 2019

ENCLOSURES

POWER DISTRIBUTION

CLIMATE CONTROL

IT INFRASTRUCTURE

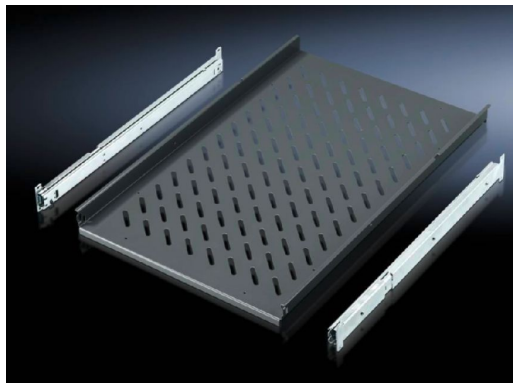
SOFTWARE & SERVICES

FRIEDHELM LOH GROUP



# Component shelf, pull-out for TS, SE, PC, IW – IW 6902.960

created: 21.02.2019 build on [www.rittal.com/uk-en](http://www.rittal.com/uk-en)



## Product description

<b>Description:</b>	For direct mounting on the vertical TS enclosure section.
<b>Applications:</b>	On the vertical TS, SE enclosure section
<b>Material:</b>	Sheet steel
<b>Colour:</b>	RAL 7015
<b>Supply includes:</b>	2 telescopic slides
<b>Note:</b>	For enclosures without mounting plate
<b>Note on Model No.:</b>	May also be installed in 800 mm deep enclosures based on TS (pull-out rear attachment).

## Product features

<b>To fit:</b>	Enclosure type: TS Enclosure type: PC Enclosure type: IW Width: = 600 mm Depth: = 600 mm Depth: = 800 mm
<b>Support area:</b>	Width: 465 mm Depth: 545 mm
<b>Load capacity:</b>	30 kg surface load, static

<b>Packs of:</b>	1 pc(s).
<b>Weight/pack:</b>	7.8 kg
<b>EAN:</b>	4028177289864
<b>Customs tariff number:</b>	94039010
<b>ETIM 6.0:</b>	EC002620
<b>ETIM 5.0:</b>	EC002620
<b>eCl@ss 8.0/8.1:</b>	27189261
<b>eCl@ss 7.0/7.1:</b>	27189261
<b>eCl@ss 6.0/6.1:</b>	27189261
<b>eCl@ss 5.1/5.1.4:</b>	27189218
<b>Product description:</b>	IW Component shelf, pull-out, for TS, SE, PC, IW, for enclosure depth 600 mm