

Rittal – The System.

Faster – better – everywhere.

Wall console CP 40, stainless steel – CP 6665.000

Date : Feb 20, 2019

ENCLOSURES

POWER DISTRIBUTION

CLIMATE CONTROL

IT INFRASTRUCTURE

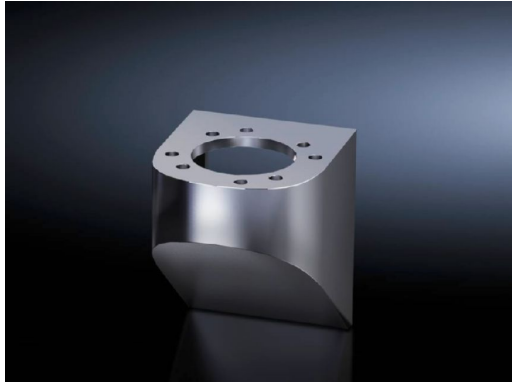
SOFTWARE & SERVICES

FRIEDHELM LOH GROUP



Wall console CP 40, stainless steel – CP 6665.000

created: 20.02.2019 build on www.rittal.com/uk-en



Product description

Design:	Rear, M8 thread
Applications:	With holes for mounting Base mount, swivel, CP 40, stainless steel (6663.500), with 4 screws Wall/base mount, rigid, CP 40, stainless steel (6663.000), with 4 screws and nuts
Material:	Stainless steel 1.4301 (AISI 304)
Surface finish:	Brushed, grain 240
Protection category IP to IEC 60 529:	IP 69K

Product features

rigid:	yes
Packs of:	1 pc(s).
Weight/pack:	1.5 kg
EAN:	4028177122284
Customs tariff number:	73269098
ETIM 6.0:	EC000882
ETIM 5.0:	EC000882

eCl@ss 8.0/8.1: 27400556

eCl@ss 7.0/7.1: 27189261

eCl@ss 6.0/6.1: 27189261

eCl@ss 5.1/5.1.4: 27189247

Product description: CP Wall console CP 40, rear mounting, stainless steel, 1.4301

Approvals

Declarations: Manufacturer's declaration
