

Rittal – The System.

Faster – better – everywhere.

Wall/base mounting bracket CP 120, large – CP 6212.800

Date : Feb 15, 2019

ENCLOSURES

POWER DISTRIBUTION

CLIMATE CONTROL

IT INFRASTRUCTURE

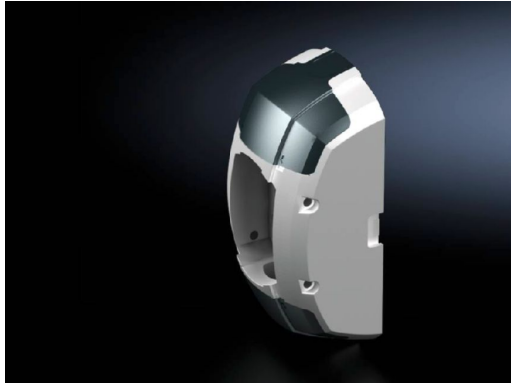
SOFTWARE & SERVICES

FRIEDHELM LOH GROUP



Wall/base mounting bracket CP 120, large – CP 6212.800

created: 15.02.2019 build on www.rittal.com/uk-en



Product description

Description: For stable attachment of the support arm system to vertical or horizontal surfaces.

Benefits: Prepared for flexible cable entry and routing from all sides
Integral one-man assembly via machined keyhole
Optional anti-twist attachment on the mounting surface by pinning
Integral adjustment facility

Material: Wall/base mounting bracket: Cast aluminium
Cover: Plastic

Colour: Wall/base mounting bracket, RAL 7035
Cover: RAL 7024

Supply includes: Seals
Grub screws
Adjusting screws
Self-tapping screws for support section attachment

Product features

rigid: yes

Packs of: 1 pc(s).

Weight/pack: 2.5 kg

EAN: 4028177684140

Customs tariff number:	73182900
ETIM 6.0:	EC000882
ETIM 5.0:	EC000882
eCl@ss 8.0/8.1:	27400556
eCl@ss 7.0/7.1:	27189261
eCl@ss 6.0/6.1:	27189261
eCl@ss 5.1/5.1.4:	27189247
Product description:	CP Wall/base mounting bracket CP 120, large
Approvals	
Declarations:	Manufacturer's declaration