

Rittal – The System.

Faster – better – everywhere.

Connection plate with reinforcement plate – CP 6212.540

Date : Feb 11, 2019

ENCLOSURES

POWER DISTRIBUTION

CLIMATE CONTROL

IT INFRASTRUCTURE

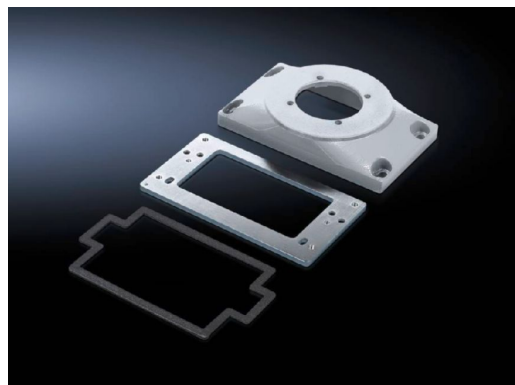
SOFTWARE & SERVICES

FRIEDHELM LOH GROUP



Connection plate with reinforcement plate – CP 6212.540

created: 11.02.2019 build on www.rittal.com/uk-en



Product description

Design: For mounting
Comfort Panel from a front panel width of 247 mm and installation depth of 152 mm
Optipanel from a front panel width of 220 mm and installation depth of 150 mm
Sheet steel from 135 mm installation depth
For mounting on support arm system components
Attachment CP 60/120 for support arm connection Ø 130 mm, 6206.320, 6212.320
Coupling CP 60/120/180 for support arm connection Ø 130 mm, 6206.300, 6212.300, 6218.300
Angle coupling 90°, system 60/120 for support arm connection Ø 130 mm, CP 6206.380, 6212.380
Tilting adaptor 10°, system 60/120 for support arm connection Ø 130 mm, CP 6206.400
Tilting adaptor ±45°, system 60/120 for support arm connection Ø 130 mm, CP 6206.420

Benefits: For easy location of the command panel onto the support arm or pedestal
More space for cable entry

Material: Connection plate: Cast aluminium
Reinforcement plate: Sheet steel, 6 mm

Colour: RAL 7035

Supply includes: Reinforcement plate
Seals
Assembly parts

Product features

Packs of: 1 pc(s).

Weight/pack: 1.4 kg

EAN:	4028177684232
Customs tariff number:	76169990
ETIM 6.0:	EC000882
ETIM 5.0:	EC000882
eCl@ss 8.0/8.1:	27400556
eCl@ss 7.0/7.1:	27189261
eCl@ss 6.0/6.1:	27189261
eCl@ss 5.1/5.1.4:	27189247
Product description:	CP Connection plates, with reinforced plate CP 120/60, for support arm connection Ø 130 mm
Approvals	
Declarations:	Manufacturer's declaration