

Rittal – The System.

Faster – better – everywhere.

► Adaptor support arm connection Ø 130 mm to 120 x 65 mm – CP 6212.500

Date : Nov 27, 2019

ENCLOSURES

POWER DISTRIBUTION

CLIMATE CONTROL

IT INFRASTRUCTURE

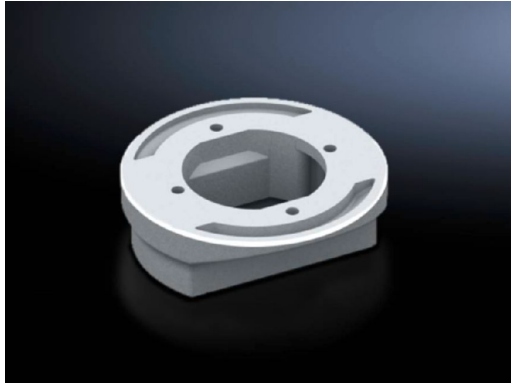
SOFTWARE & SERVICES

FRIEDHELM LOH GROUP



Adaptor support arm connection Ø 130 mm to 120 x 65 mm – CP 6212.500

created: 27.11.2019 build on www.rittal.com/uk-en



Product description

Design: For external mounting of command panel with support arm cut-out 120 x 65 mm and connection console VESA 75/100 to:
Coupling CP 120, 6212.300
Attachment CP 120, 6212.320
Angle coupling 90°, CP 120, 6212.380
Pivot with jib (6206.850)
Pivot for machine-integrated installation (6206.870)

Material: Cast aluminium

Colour: RAL 7035

Supply includes: Seals
Assembly parts

Product features

Dimensions: Height: 40 mm

rigid: yes

Packs of: 1 pc(s).

Weight/pack: 0.5 kg

EAN: 4028177684218

Customs tariff 76169990

number:

ETIM 7.0: EC000882

ETIM 6.0: EC000882

eCl@ss 8.0/8.1: 27400556

eCl@ss 6.0/6.1: 27189261

Product description: CP Adaptor CP 120/60, from support arm connection Ø 130 mm to 120 x 65 mm

Approvals

Declarations: Manufacturer's declaration
