



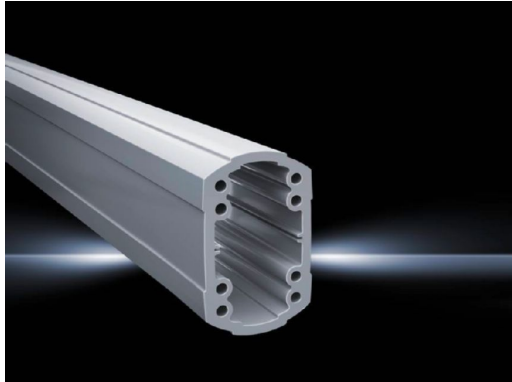
# Support section CP 120 Solid – CP 6212.050

Date : Nov 27, 2019



# Support section CP 120 Solid – CP 6212.050

: 27.11.2019 build on [www.rittal.com/uk-en](http://www.rittal.com/uk-en)



## Product description

<b>Description:</b>	Attachment to the connection components with 4 self-tapping screws in the screw channel. May be cut to any required length, no thread-tapping required. Closed cable duct with a large cross-section.
<b>Material:</b>	Support section: Extruded aluminium section
<b>Colour:</b>	Support section: RAL 7035
<b>Supply includes:</b>	Support section

## Product features

<b>Dimensions:</b>	Width: 75 mm Height: 120 mm
<b>Length:</b>	500 mm
<b>Packs of:</b>	1 pc(s).
<b>Weight/pack:</b>	3.9 kg
<b>EAN:</b>	4028177683938
<b>Customs tariff number:</b>	76042100
<b>ETIM 7.0:</b>	EC000882
<b>ETIM 6.0:</b>	EC000882

<b>eCl@ss 8.0/8.1:</b>	27400556
<b>eCl@ss 6.0/6.1:</b>	27189261
<b>Product description:</b>	CP Support section CP 120, solid, L: 500 mm
<b>Approvals</b>	
<b>Declarations:</b>	Manufacturer's declaration