

Rittal – The System.

Faster – better – everywhere.

Wall/base mounting bracket CP 60, large – CP 6206.800

Date : Feb 4, 2019

ENCLOSURES

POWER DISTRIBUTION

CLIMATE CONTROL

IT INFRASTRUCTURE

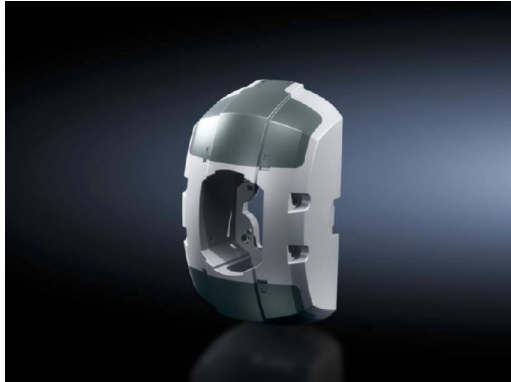
SOFTWARE & SERVICES

FRIEDHELM LOH GROUP



Wall/base mounting bracket CP 60, large – CP 6206.800

created: 04.02.2019 build on www.rittal.com/uk-en



Product description

Description: For stable attachment of the support arm system to vertical or horizontal surfaces.

Benefits: Prepared for flexible cable entry and routing from all sides
Integral one-man assembly via machined keyhole
Optional anti-twist attachment on the mounting surface by pinning
Integral adjustment facility

Material: Wall/base mounting bracket: Cast aluminium
Cover: Plastic

Colour: Wall/base mounting bracket, RAL 7035
Cover: RAL 7024

Supply includes: Seals
Grub screws
Adjusting screws
Self-tapping screws for support section attachment

Product features

rigid: yes

Packs of: 1 pc(s).

Weight/pack: 1.4 kg

EAN: 4028177684324

Customs tariff number: 73182900

ETIM 6.0: EC000882

ETIM 5.0: EC002620

eCl@ss 8.0/8.1: 27400556

eCl@ss 7.0/7.1: 27189261

eCl@ss 6.0/6.1: 27189261

eCl@ss 5.1/5.1.4: 27189247

Product description: CP Wall/base mounting bracket CP 60, large

Approvals

Declarations: Manufacturer's declaration
