

Rittal – The System.

Faster – better – everywhere.

► Tilting adaptor 10° for support arm connection 120 x 65 mm – CP 6206.440

Date : Jan 29, 2019

ENCLOSURES

POWER DISTRIBUTION

CLIMATE CONTROL

IT INFRASTRUCTURE

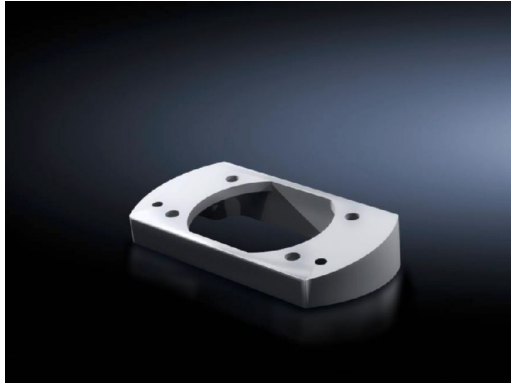
SOFTWARE & SERVICES

FRIEDHELM LOH GROUP



Tilting adaptor 10° for support arm connection 120 x 65 mm – CP 6206.440

created: 29.01.2019 build on www.rittal.com/uk-en



Product description

Design:	For mounting between the command panel and Coupling CP 60, 6206.340 or attachment CP 60, 6206.340
Description:	For mounting between coupling, system 60 or attachment, system 60 and the command panel
Material:	Die-cast zinc
Colour:	RAL 7035
Supply includes:	Seals Assembly parts

Product features

rigid:	yes
Packs of:	1 pc(s).
Weight/pack:	0.4 kg
EAN:	4028177684430
Customs tariff number:	79070000
ETIM 6.0:	EC000882

ETIM 5.0: EC002620

eCl@ss 8.0/8.1: 27400556

eCl@ss 7.0/7.1: 27189261

eCl@ss 6.0/6.1: 27189261

eCl@ss 5.1/5.1.4: 27189247

Product description: CP Tilting adaptor 10°, CP 60/120, for support arm connection 120 x 65 mm

Approvals

Declarations: Manufacturer's declaration
