

Rittal – The System.

Faster – better – everywhere.

Gland plates for CM, TP – CM 5001.217

Date : Jan 13, 2017

ENCLOSURES

POWER DISTRIBUTION

CLIMATE CONTROL

IT INFRASTRUCTURE

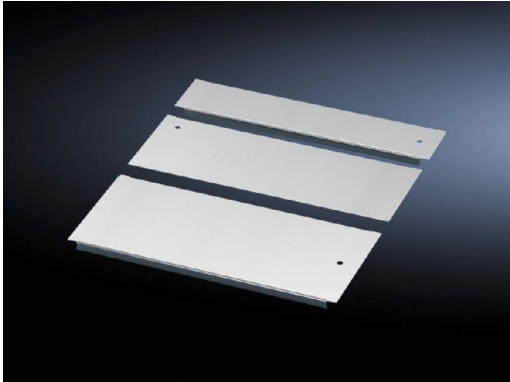
SOFTWARE & SERVICES

FRIEDHELM LOH GROUP



Gland plates for CM, TP – CM 5001.217

created: 13.01.2017 build on www.rittal.com/uk-en



Product description

Description: Potential equalisation is provided via assembly components and earthing points.

Material: Sheet steel

Surface finish: Zinc-plated

Supply includes: Assembly parts

Note: For greater stability and universal cable entry, the base opening is divided in the width for 1000, 1200 and 1600 mm wide enclosures, and is suitable for various configurations. Several gland module plates need to be combined to close off the base completely in the TS-IT

Product features

To fit: Enclosure type: TS IT
Enclosure type: TS
Enclosure type: CM
Enclosure type: TP
Width: = 1200 mm

Dimensions: Depth: 100 mm

Packs of: 1 pc(s).

Weight/pack: 0.94 kg

EAN: 4028177523210

Customs tariff number:	73269098
ETIM 6.0:	EC002620
ETIM 5.0:	EC002620
eCl@ss 8.0/8.1:	27189261
eCl@ss 7.0/7.1:	27189261
eCl@ss 6.0/6.1:	27189261
eCl@ss 5.1/5.1.4:	27189240

2017 © Rittal Ltd UK