

Rittal – The System.

Faster – better – everywhere.

Door-operated switch – SZ 4127.010

Date : May 3, 2016

ENCLOSURES

POWER DISTRIBUTION

CLIMATE CONTROL

IT INFRASTRUCTURE

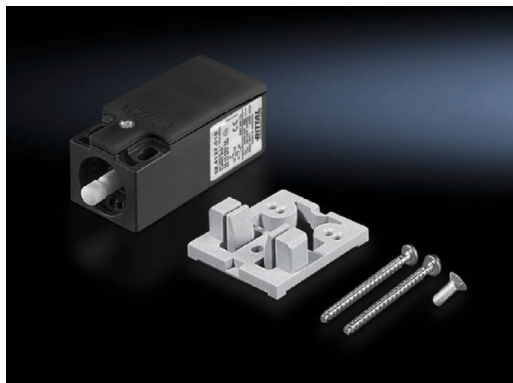
SOFTWARE & SERVICES

FRIEDHELM LOH GROUP



Door-operated switch – SZ 4127.010

created : 03.05.2016 build on www.rittal.com/uk-en



Product description

Packs of: 1 pc(s).

EAN: 4028177497740

Customs tariff number: 85369085

eCl@ss 5.1: 27189241

eCl@ss 7.0: 27119116

ETIM 6.0: EC002626

Product features

Design: Without connection cable

Rated operating voltage: 400 V

Installation options: for standard and courtesy light without integral door-operated switch

Technical specifications: 240 V AC, 6 A

Rated insulation voltage: 400 V AC

Rated impulse withstand voltage, phase to phase: 6000 V AC


Weight/pack: 0.08 kg

Approvals

Approvals:  [CSA \(EN\)](#)
 [UL \(DE\)](#)

Declarations:  [Declaration of conformity \(DE\)](#)

Downloads

Documentation:  [Info sheet \(PT, ZH, CS, FR, JP, RU, ES, DE, FI, KO, SV, NO, NL, VI, EN, HU, PL, IT, DA\)](#)

CAD drawings: Request
