

Rittal – The System.

Faster – better – everywhere.

► Base/plinth trim panels, side, 200 mm¹ for AX – AX 2820.320

Date : Jan 28, 2020

ENCLOSURES

POWER DISTRIBUTION

CLIMATE CONTROL

IT INFRASTRUCTURE

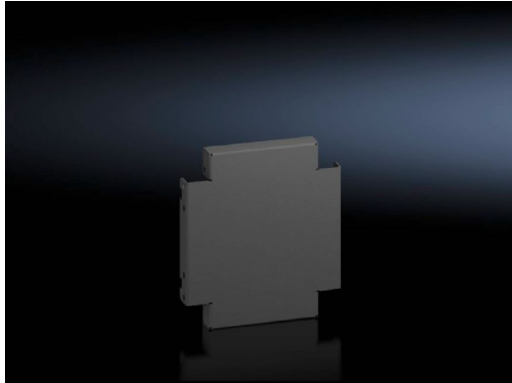
SOFTWARE & SERVICES

FRIEDHELM LOH GROUP



Base/plinth trim panels, side, 200 mm¹ for AX – AX 2820.320

created: 28.01.2020 build on www.rittal.com/uk-en



Product description

Description: To finish off a base/plinth unit at the sides and for additional stability, or for the interior installation of bayed base/plinths. One 200 mm high or two 100 mm high trim panels may optionally be fitted on 200 mm high base/plinths.

Material: Sheet steel

Colour: RAL 9005

Supply includes: Assembly parts

Product features

To fit: Depth: = 300 mm

Dimensions: Height: 200 mm

Packs of: 2 pc(s).

Copper weight (kg per piece): 0

EAN: 4028177942646

Customs tariff number: 94039010

ETIM 7.0: EC000721

ETIM 6.0: EC000721

eCl@ss 8.0/8.1: 27182003

eCl@ss 6.0/6.1: 27189270

Product description: AX Base/plinth trim panels, sides, H: 200 mm, for D: 300 mm
