

# Rittal – The System.

Faster – better – everywhere.

## Protective roof for AX – AX 2362.010

Date : Apr 6, 2020

ENCLOSURES

POWER DISTRIBUTION

CLIMATE CONTROL

IT INFRASTRUCTURE

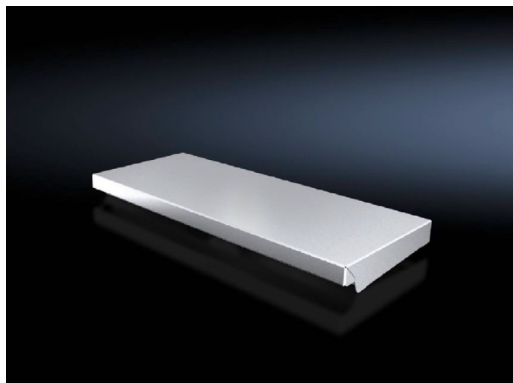
SOFTWARE & SERVICES

FRIEDHELM LOH GROUP



# Protective roof for AX – AX 2362.010

created: 06.04.2020 build on [www.rittal.com/uk-en](http://www.rittal.com/uk-en)



## Product description

<b>Description:</b>	The sloping protective roof reliably protects the enclosure from standing moisture and other soiling from above. It can be attached to the enclosure without any machining.
<b>Material:</b>	Stainless steel 1.4301 (AISI 304)
<b>Surface finish:</b>	Brushed, grain 240
<b>Supply includes:</b>	Assembly parts

## Product features

<b>To fit:</b>	Enclosure type: AX Width: = 500 mm Depth: = 210 mm
<b>Dimensions:</b>	Height: 37 mm
<b>Packs of:</b>	1 pc(s).
<b>Copper weight (kg per piece):</b>	0
<b>EAN:</b>	4028177938120
<b>Customs tariff number:</b>	94039010
<b>ETIM 7.0:</b>	EC000744
<b>ETIM 6.0:</b>	EC000744

---

<b>eCl@ss 8.0/8.1:</b>	27182405
<b>eCl@ss 6.0/6.1:</b>	27182405
<b>Product description:</b>	AX Protective roof, for WD: 500x210 mm, stainless steel

---