

Rittal – The System.

Faster – better – everywhere.

► Small enclosures KX Bus enclosures KX, sheet steel – KX 1611.000

Date : Mar 13, 2020

ENCLOSURES

POWER DISTRIBUTION

CLIMATE CONTROL

IT INFRASTRUCTURE

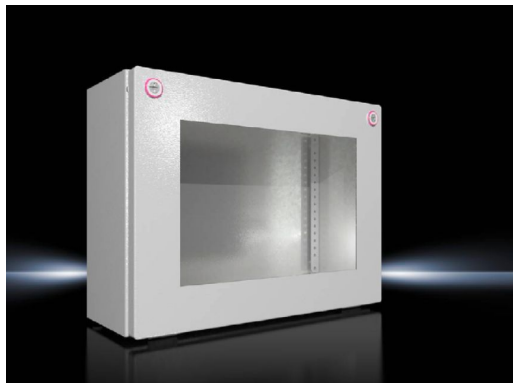
SOFTWARE & SERVICES

FRIEDHELM LOH GROUP



Small enclosures KX Bus enclosures KX, sheet steel – KX 1611.000

created: 13.03.2020 build on www.rittal.com/uk-en



Product description

Material:	Enclosure: Sheet steel Cover: Sheet steel, all-round foamed-in PU seal Viewing window: Polycarbonate, 4 mm
Surface finish:	Enclosure and cover: Dipcoat primed, powder-coated on the outside, textured paint
Colour:	RAL 7035
Protection category IP to IEC 60 529:	IP 65
Protection category NEMA:	NEMA 12
Type rating to UL 508A:	Type 1, 12
IK Code:	IK08
Supply includes:	Enclosure with hinged cover Viewing window in cover Mini cam locks
Basic material:	Sheet steel

Product features

Dimensions:	Width: 400 mm Height: 300 mm Depth: 155 mm
--------------------	--

Material thickness:	Enclosure: 1.25 mm Cover: 1.25 mm
Packs of:	1 pc(s).
Weight/pack:	4.72 kg
EAN:	4028177816688
Customs tariff number:	94032080
ETIM 7.0:	EC002713
ETIM 6.0:	EC002713
eCl@ss 8.0/8.1:	27180101
eCl@ss 6.0/6.1:	27180101
Product description:	KX Bus enclosure, WHD: 400x300x155 mm, sheet steel, with solid base, with hinged cover and viewing window
Approvals	
Approvals:	UL
Declarations:	Declaration of conformity