

□

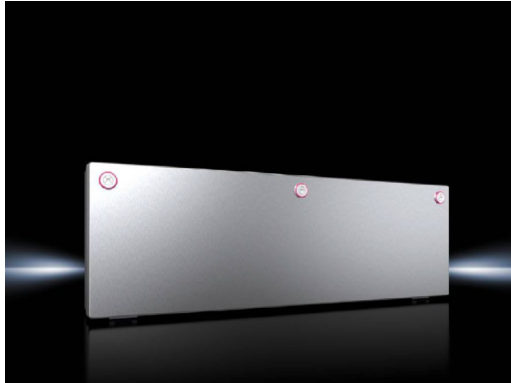
**Small enclosures KX  
Bus enclosures KX,  
stainless steel – KX  
1586.000**

Date : Feb 4, 2020

□

# Small enclosures KX Bus enclosures KX, stainless steel – KX 1586.000

: 04.02.2020 build on [www.rittal.com/uk-en](http://www.rittal.com/uk-en)



## Product description

**Description:** The small enclosure KX, bus enclosure KX (sheet steel), allows for flexible interior installation and provides easy access thanks to the series-standard 180° hinges.

**Material:** Enclosure: Stainless steel 1.4301 (AISI 304)  
Cover: Stainless steel 1.4301 (AISI 304), all-round foamed-in PU seal  
Hinges: Die-cast zinc

**Surface finish:** Enclosure and cover: Brushed, grain 400, peak-to-valley height < 0.8 µm

**Protection category IP to IEC 60 529:** IP 66

**Protection category NEMA:** NEMA 4X

**Type rating to UL 508A:** Type 3X/4X

**Supply includes:** Enclosure with hinged cover  
Mini cam locks

**Basic material:** Stainless steel 1.4301 (AISI 304)

## Product features

**Dimensions:** Width: 600 mm  
Height: 200 mm  
Depth: 120 mm

**Design support rail:** adjustable on profile strip

<b>Material thickness:</b>	Enclosure: 1.25 mm Door: 1.25 mm
<b>Door hinge:</b>	bottom
<b>Packs of:</b>	1 pc(s).
<b>Weight/pack:</b>	6 kg
<b>EAN:</b>	4028177919129
<b>Customs tariff number:</b>	94032080
<b>ETIM 7.0:</b>	EC000261
<b>ETIM 6.0:</b>	EC000261
<b>eCl@ss 8.0/8.1:</b>	27180101
<b>eCl@ss 6.0/6.1:</b>	27180101
<b>Product description:</b>	KX Bus enclosure, WHD: 600x200x120 mm, stainless steel 1.4301, with hinged lid