

Rittal – The System.

Faster – better – everywhere.

► Terminal boxes KL Stainless steel – KL 1526.010

Date : May 31, 2016

ENCLOSURES

POWER DISTRIBUTION

CLIMATE CONTROL

IT INFRASTRUCTURE

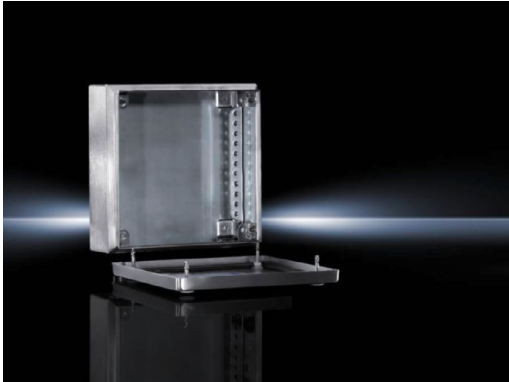
SOFTWARE & SERVICES

FRIEDHELM LOH GROUP



Terminal boxes KL Stainless steel – KL 1526.010

created : 31.05.2016 build on www.rittal.com/uk-en



Product description

Material: Enclosure: Stainless steel 1.4301 (AISI 304)
Cover: Stainless steel 1.4301 (AISI 304), all-round foamed-in PU seal

Surface finish: Enclosure and cover: Brushed, grain 180

**Protection category
IP to IEC 60 529:** IP 66

**Protection category
NEMA:** NEMA 4X

IK Code: IK08

Supply includes: Enclosure with cover
Quick-release fastener including plastic bushes

Packs of: 1 pc(s).

EAN: 4028177008540

**Customs tariff
number:** 94032080

eCl@ss 5.1: 27180102

eCl@ss 7.0: 27180101

ETIM 6.0: EC002713

Product features

Dimensions:	Width: 300 mm Height: 300 mm Depth: 120 mm
Material thickness:	Enclosure: 1.25 mm Cover: 1.25 mm
Number of quick-release fasteners:	4
Weight/pack:	3.9 kg



Approvals


Approvals:	 Bureau Veritas (EN)  CSA (EN)  Germanischer Lloyd (EN)  Lloyds Register of Shipping (EN)  Russian Maritime Register of Shipping (EN)  TUV EN  UL + C-UL (EN)
-------------------	--

Certificates:	 IK-Code (EN)  Protection category (EN)
----------------------	--

Declarations:	 Declaration of conformity (EN, DE)  Manufacturer's declaration EN
----------------------	---

Downloads

Data sheets:	 Technical details EN  Technical system catalogue EN
---------------------	---

Documentation:	 Instructions (EN, DE)
-----------------------	---

CAD drawings:	Request
----------------------	---------

Please note that there are the following alternative products:



Ex enclosures Stainless steel, empty enclosure with screw fastened cover

Further information on this product



Terminal boxes KL without gland plate

Further information on this product

◆ www.rittal.com/uk-en/Terminal_boxes_KL_without_gland_plate