

Rittal – The System.

Faster – better – everywhere.

Plastic handles – KS 1484.000

Date : Feb 21, 2019

ENCLOSURES

POWER DISTRIBUTION

CLIMATE CONTROL

IT INFRASTRUCTURE

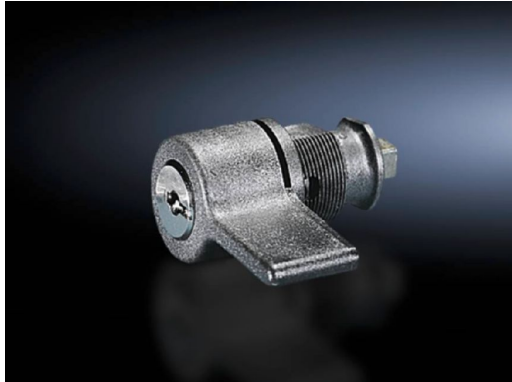
SOFTWARE & SERVICES

FRIEDHELM LOH GROUP



Plastic handles – KS 1484.000

created: 21.02.2019 build on www.rittal.com/uk-en



Product description

Colour: RAL 8019

Supply includes: Assembly parts
Seal
with 2 keys

Product features

To fit: Enclosure type: KS with cam

Lock insert: with cylinder insert, lock no. 3524 E

Packs of: 1 pc(s).

Weight/pack: 0.06 kg

EAN: 4028177007239

Customs tariff number: 39269097

ETIM 6.0: EC000327

ETIM 5.0: EC000327

eCl@ss 8.0/8.1: 27409217

eCl@ss 7.0/7.1: 27189266

eCl@ss 6.0/6.1: 27189266

eCl@ss 5.1/5.1.4: 27189220

Product description: KS Plastic handle, version E, with lock cylinder insert, Lock no. 3524 E

Approvals

Certificates: EAC
