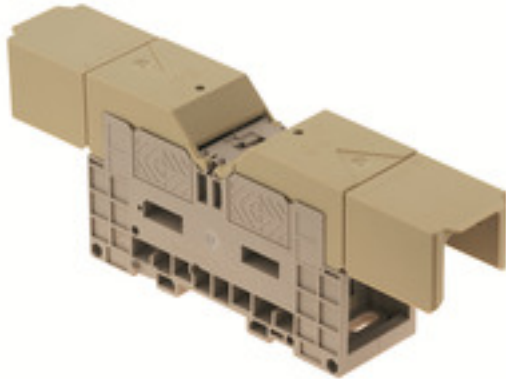


## Bolt-type screw terminals WFF 185/AH

**Weidmüller Interface GmbH & Co. KG**  
 Klingenbergstraße 26  
 D-32758 Detmold  
 Germany  
 Fon: +49 5231 14-0  
 Fax: +49 5231 14-292083  
 www.weidmueller.com

### Product image



Similar to illustration

#### **Klippon® Connect with stud Technology**

Our stud terminals are an established, robust connection alternative for particularly harsh environments. The extensive accessories and quality workmanship ensure high productivity in planning and installation – and sustainable safety in operation..

#### General ordering data

Type	WFF 185/AH
Order No.	<a href="#">102960000</a>
Version	Bolt-type screw terminals, Feed-through terminal, Rated cross-section: 185 mm <sup>2</sup> , Threaded stud connection
GTIN (EAN)	4008190106188
Qty.	2 pc(s).

## Bolt-type screw terminals WFF 185/AH

**Weidmüller Interface GmbH & Co. KG**  
Klingenbergstraße 26  
D-32758 Detmold  
Germany  
Fon: +49 5231 14-0  
Fax: +49 5231 14-292083  
www.weidmueller.com

## Technical data

### Dimensions and weights

Width	55 mm	Width (inches)	2.165 inch
Height	163 mm	Height (inches)	6.417 inch
Depth	89.5 mm	Depth (inches)	3.524 inch
Depth including DIN rail	87 mm	Weight	455 g
Net weight	469.84 g		

### Temperatures

Operating temperature range	For operating temperature range see EC Design Test Certificate / IEC Ex-Certificate of Conformity	Storage temperature, max.	40 °C
Storage temperature, min.	10 °C	Storage temperature	10 °C...40 °C
Continuous operating temp., min.	-50 °C	Continuous operating temp., max.	120 °C

### Material data

Material	Wemid	Colour	dark beige
UL 94 flammability rating	V-0		

### Rating data IECEx/ATEX

Certificate No. (ATEX)	KEMA98ATEX1684U	Certificate No. (IECEX)	IECEXKEM07.0053U
Max. voltage (ATEX)	1100 V	Current (ATEX)	307 A
Wire cross section max. (ATEX)	185 mm <sup>2</sup>	Max. voltage (IECEX)	1100 V
Current (IECEX)	307 A	Wire cross section max. (IECEX)	185 mm <sup>2</sup>
Operating temperature range	For operating temperature range see EC Design Test Certificate / IEC Ex-Certificate of Conformity	Marking EN 60079-7	Ex eb II C Gb
Ex 2014/34/EU label	II 2 G D		

### System specifications

End cover plate required	No	Number of levels	1
Number of clamping points per level	2	Levels cross-connected internally	No
PE connection	No	Rail	TS 35

### Additional technical data

Explosion-tested version	Yes	Number of similar terminals	1
Open sides	closed	Type of mounting	Snap-on

### CSA rating data

Certificate No. (CSA)	200039-1244019	Current size C (CSA)	360 A
Current size D (CSA)	5 A	Voltage size C (CSA)	600 V
Voltage size D (CSA)	600 V	Wire cross section max. (CSA)	500 kcmil
Wire cross section min. (CSA)	8 AWG		

**Bolt-type screw terminals**  
**WFF 185/AH**

**Weidmüller Interface GmbH & Co. KG**  
 Klingenbergstraße 26  
 D-32758 Detmold  
 Germany  
 Fon: +49 5231 14-0  
 Fax: +49 5231 14-292083  
 www.weidmueller.com

**Technical data****Conductors for clamping (rated connection)**

2 x cable lugs DIN 46 234	10...185 mm <sup>2</sup>	2 x cable lugs DIN 46 235	25...185 mm <sup>2</sup>
Cable lug to DIN 46234	10...240 mm <sup>2</sup>	Cable lug to DIN 46235	25...240 mm <sup>2</sup>
Clamping range, max.	240 mm <sup>2</sup>	Clamping range, min.	10 mm <sup>2</sup>
Number of connections	2	Stud size for spade connection	M 12
Tightening torque, max.	31 Nm	Tightening torque, min.	14 Nm
Type of connection	Threaded stud connection		

**Rating data**

Rated cross-section	185 mm <sup>2</sup>	Rated voltage	1,000 V
Rated current	353 A	Current at maximum wires	415 A
Volume resistance according to IEC 60947-7-x	0.09 mΩ	Power loss in accordance with IEC 60947-7-x	11.3 W
Rated impulse withstand voltage	8 kV	Pollution severity	3

**Stud connection**

2 x cable lugs DIN 46 234	10...185 mm <sup>2</sup>	2 x cable lugs DIN 46 235	25...185 mm <sup>2</sup>
Cable lug to DIN 46234	10...240 mm <sup>2</sup>	Cable lug to DIN 46235	25...240 mm <sup>2</sup>
Stud size for spade connection	M 12	Tightening torque, max.	31 Nm
Tightening torque, min.	14 Nm		

**UL rating data**

Certificate No. (UR)	E60693	Conductor size Factory wiring max. (UR)	500 AWG
Conductor size Factory wiring min. (UR)	8 AWG	Conductor size Field wiring max. (UR)	500 AWG
Conductor size Field wiring min. (UR)	8 AWG	Current size C (UR)	380 A
Voltage size C (UR)	1000 V		

**Classifications**

ETIM 6.0	EC000897	ETIM 7.0	EC000897
eClass 9.0	27-14-11-20	eClass 9.1	27-14-11-20
eClass 10.0	27-14-11-20	UNSPSC	30-21-18-01

**Approvals**

Approvals



ROHS

Conform

**Bolt-type screw terminals  
WFF 185/AH**

**Weidmüller Interface GmbH & Co. KG**  
Klingenbergstraße 26  
D-32758 Detmold  
Germany  
Fon: +49 5231 14-0  
Fax: +49 5231 14-292083  
www.weidmueller.com

**Technical data****Downloads**

Approval/Certificate/Document of Conformity	<a href="#">Attestation of Conformity</a> <a href="#">IECEX Certificate</a> <a href="#">IECEX Certificate</a> <a href="#">IECEX Certificate</a> <a href="#">IECEX Certificate</a> <a href="#">ATEX Certificate</a> <a href="#">CB Certificate</a> <a href="#">DE_PT1004_20160418_868_ISSUE01.pdf</a>
Brochure/Catalogue	<a href="#">CAT 1 TERM 16/17 EN</a>
Engineering Data	<a href="#">EPLAN, WSCAD, Zuken E3.S</a>
Engineering Data	<a href="#">STEP</a>
User Documentation	<a href="#">Cross Connection Guide</a> <a href="#">StorageConditionsTerminalBlocks</a> <a href="#">Instruction</a>

**Safety note**

Safety notice	<a href="#">Safety Information</a>
---------------	------------------------------------

## Bolt-type screw terminals WFF 185/AH

**Weidmüller Interface GmbH & Co. KG**  
 Klingenbergstraße 26  
 D-32758 Detmold  
 Germany  
 Fon: +49 5231 14-0  
 Fax: +49 5231 14-292083  
 www.weidmueller.com

# Accessories

## Blank



WS markers are the perfect match for the W-series connectors. Thanks to their system compatibility, the WS tags can also be used with the I-series and the Z-series. The large marking surfaces do not only permit long character strings but also multi-line text. WS markers are ideal for labels with long, customised character strings. Thanks to the proven MultiCard format, printing with laser printer, PrintJet ADVANCED, plotter or MC-Mobilo is possible.

- Can be fitted in strips or individually
- Markers in proven MultiCard format

**For custom printing:** Please send us a file of our labeling software M-Print PRO or M-Print PRO Online (without installation) for your labeling specifications.

### General ordering data

Type	WS 12/6.5 MC NE WS	Version
Order No.	<a href="#">1609920000</a>	WS, Terminal marker, 12 x 6.5 mm, Pitch in mm (P): 6.50
GTIN (EAN)	4008190203511	Weidmueller, Allen-Bradley, white
Qty.	540 pc(s).	

## Blank



The Dekafix (DEK) marker is the universal marker for all conductor and plug-in connectors as well as for electronic sub-assemblies. The system is ideal for short number sequences and covers a wide range of ready-printed markers.

Strips for fast installation in only one work step. The printing is easy to read, rich in contrast and available in various widths.

- Large range of ready-to-use markers
- Strips for fast installation
- Terminal markers, suitable for all Weidmüller cable connectors
- Available as blank MultiCard or with standard printing

**For custom printing:** Please send us a file of our labeling software M-Print PRO or M-Print PRO Online (without installation) for your labeling specifications.

### General ordering data

Type	DEK 5/5 MC NE WS	Version
Order No.	<a href="#">1609801044</a>	Dekafix, Terminal marker, 5 x 5 mm, Pitch in mm (P): 5.00
GTIN (EAN)	4008190397111	Weidmueller, white
Qty.	1,000 pc(s).	

**Data sheet**

**Bolt-type screw terminals  
WFF 185/AH**

**Weidmüller Interface GmbH & Co. KG**  
 Klingenbergstraße 26  
 D-32758 Detmold  
 Germany  
 Fon: +49 5231 14-0  
 Fax: +49 5231 14-292083  
 www.weidmueller.com

**Accessories**

**Custom printing**



WS markers are the perfect match for the W-series connectors. Thanks to their system compatibility, the WS tags can also be used with the I-series and the Z-series. The large marking surfaces do not only permit long character strings but also multi-line text. WS markers are ideal for labels with long, customised character strings. Thanks to the proven MultiCard format, printing with laser printer, PrintJet ADVANCED, plotter or MC-Mobilo is possible.

- Can be fitted in strips or individually
- Markers in proven MultiCard format

**For custom printing:** Please send us a file of our labeling software M-Print PRO or M-Print PRO Online (without installation) for your labeling specifications.

**General ordering data**

Type	WS 12/6.5 MC SDR	Version
Order No.	<a href="#">1609930000</a>	WS, Terminal marker, 12 x 6.5 mm, Pitch in mm (P): 6.50
GTIN (EAN)	4008190456665	Weidmueller, Allen-Bradley, To customer specification
Qty.	108 pc(s).	

**Cover hoods**



**Klippon® Connect with stud Technology**

Our stud terminals are an established, robust connection alternative for particularly harsh environments. The extensive accessories and quality workmanship ensure high productivity in planning and installation – and sustainable safety in operation..

**General ordering data**

Type	WAH 185/300 BE	Version
Order No.	<a href="#">1064760000</a>	Bolt-type screw terminals, Hood, beige, 54 mm
GTIN (EAN)	4008190108267	
Qty.	10 pc(s).	
Type	WAH 185/300 BL	Version
Order No.	<a href="#">1064780000</a>	Bolt-type screw terminals, Hood, blue, 54 mm
GTIN (EAN)	4008190103200	
Qty.	10 pc(s).	

**Bolt-type screw terminals  
WFF 185/AH**

**Weidmüller Interface GmbH & Co. KG**  
 Klingenbergstraße 26  
 D-32758 Detmold  
 Germany  
 Fon: +49 5231 14-0  
 Fax: +49 5231 14-292083  
 www.weidmueller.com

**Accessories**

**Test plug**



**Current and voltage transformer wiring**

Our test disconnect terminal blocks featuring spring and screw connection technology allow you to create all the important converter circuits for measuring current, voltage and power in a safe and sophisticated way.

**General ordering data**

Type	PS 4 F.STB 4	Version
Order No.	<a href="#">0299600000</a>	Accessories, Test plug
GTIN (EAN)	4008190074043	
Qty.	20 pc(s).	

**Potential distribution**



**Klippon® Connect with stud Technology**

Our stud terminals are an established, robust connection alternative for particularly harsh environments. The extensive accessories and quality workmanship ensure high productivity in planning and installation – and sustainable safety in operation..

**General ordering data**

Type	WZAF 185	Version
Order No.	<a href="#">1066400000</a>	W-Series, Additional connection
GTIN (EAN)	4008190031985	
Qty.	10 pc(s).	

**Bolt-type screw terminals  
WFF 185/AH**

**Weidmüller Interface GmbH & Co. KG**  
 Klingenbergstraße 26  
 D-32758 Detmold  
 Germany  
 Fon: +49 5231 14-0  
 Fax: +49 5231 14-292083  
 www.weidmueller.com

**Accessories**

**End brackets**



**Klippon® Connect with clamping yoke Technology**

The high reliability and variety of designs of the terminal blocks with clamping yoke connections make planning easier and optimises operational safety. Klippon® Connect provides a proven response to a range of different requirements.

**General ordering data**

Type	WEW 35/1	Version
Order No.	<a href="#">1059000000</a>	W-Series, End bracket
GTIN (EAN)	4008190172282	
Qty.	50 pc(s).	

**Cross-connections**



**Klippon® Connect with stud Technology**

Our stud terminals are an established, robust connection alternative for particularly harsh environments. The extensive accessories and quality workmanship ensure high productivity in planning and installation – and sustainable safety in operation..

**General ordering data**

Type	WQL 3 WFF185	Version
Order No.	<a href="#">1065700000</a>	Bolt-type screw terminals, Cross-connector, Number of poles: 3
GTIN (EAN)	4008190140885	
Qty.	5 pc(s).	
Type	WQL 2 WFF185	Version
Order No.	<a href="#">1065200000</a>	Bolt-type screw terminals, Cross-connector, Number of poles: 2
GTIN (EAN)	4008190044855	
Qty.	5 pc(s).	