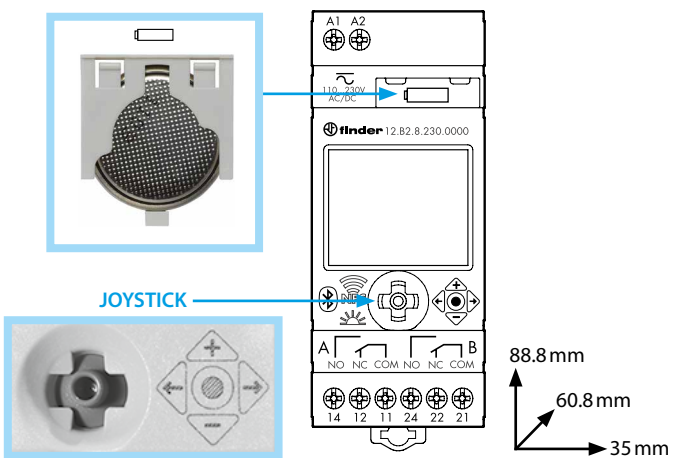
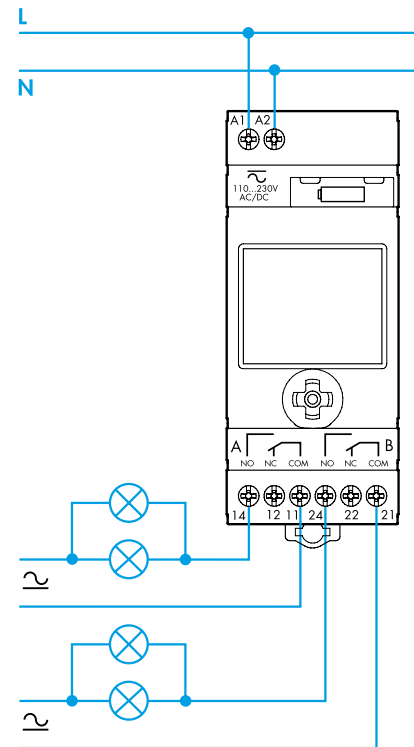




12.B2

| | |
|---------------------------|--|
| EN 60669-1 / EN 60669-2-1 | |
| | 12.B2.8.230.0000 U _N 110...230 V AC (50/60 Hz)/DC U _{min} - U _{max} 90 V - 264 V (AC/DC) P 2.8 VA (50 Hz)/0.9 W |
| | 2 CO (DPDT) 16 A 250 V AC AC1 4000 VA AC15 (230 V AC) 750 VA |
| | (230 V) 2000 W (230 V) 750 W CFL-LED (230 V) 400 W |
| | (-20...+50)°C |
| IP20 | |

FULL MANUAL
WEB



- Operating Control, Independently mounted
- Panel mounting, Type 1 Action
- Pollution Degree 2, Impulse Voltage 4000 V
- Terminals nominal torque: 0.8 Nm
- The battery can be replaced only by the manufacturer or competent personnel
- The device can be installed and configured only by the installer or a qualified installer