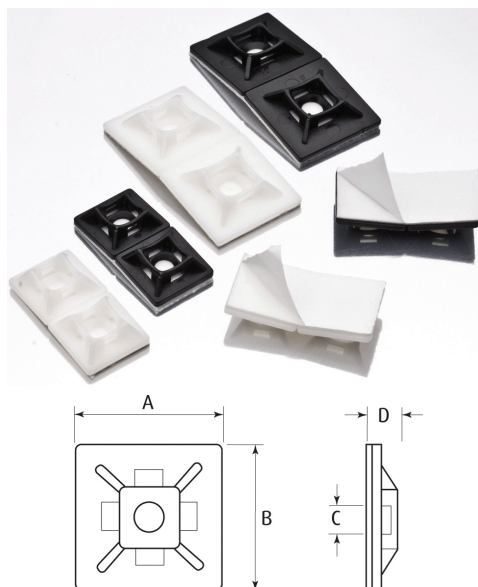


LOW PROFILE SELF-ADHESIVE TIE BASES

This tough material provides excellent insulation and chemical resistance. The black mounts are ideal where exposed to sunlight or aggressive external conditions. Two mounts are assembled on a backing strip for easy removal. A coating of synthetic rubber on both sides of the foam base creates high levels of instant take and shear adhesion.



SPECIFICATION:

COLOUR OPTIONS: Black or Natural

MATERIAL: Nylon 6.6

OPERATING TEMPERATURE: -20°C to +60°C

CHEMICAL RESISTANCE: UV Radiation



PART NO. NATURAL	PART NO. BLACK	SCREW FIX (OPT.)	DIM A (mm)	DIM B (mm)	DIM C (mm)	DIM D (mm)	PACK QTY
CCTB1	CCTB1B	M4	20	20	4.5	5	100
CCTB2	CCTB2B	M6	28	28	5.5	7.1	100

SELF-ADHESIVE CLIPS

These clips are made from a mild steel with a self-adhesive backing and have a deformable tongue which can easily be shaped around the cable to give a secure fixing.



SPECIFICATION:

COLOUR OPTIONS: White

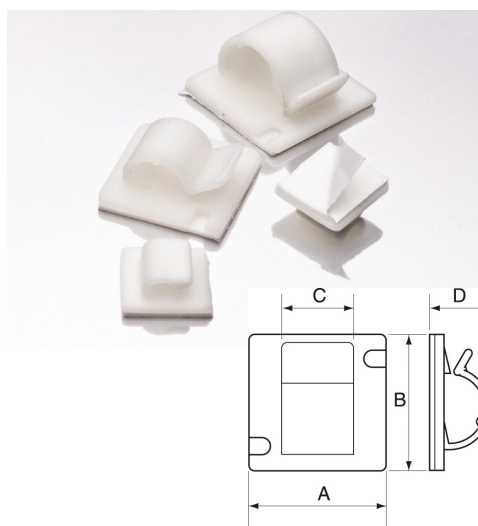
MATERIAL: Mild Steel with Gloss Polyester Coating. Acrylic Adhesive & Polythene Liner.



PART NO.	WIDTH (mm)	HEIGHT (mm)	MAX. CABLE DIA. (mm)	PACK QTY
SAF1	20	30	4.0	100
SAF2	25	38	8.0	100
SAF3	31	45	12.0	100

SELF-ADHESIVE CABLE CLIPS

These self-adhesive cable clips are available in three different sizes. They are tough and provide excellent electrical insulation. High levels of instant tack and shear adhesion are achieved with a coating of synthetic rubber adhesive on both sides of the white polyethylene foam base.



SPECIFICATION:

COLOUR OPTIONS: Natural

MATERIAL: Nylon 6.6

OPERATING TEMPERATURE: -20°C to +60°C

CHEMICAL RESISTANCE: Petrol, oils, grease and alkalis.



PART NO.	DIM A (mm)	DIM B (mm)	DIM C (mm)	DIM D (mm)	MIN. BUNDLE (mm)	MAX. BUNDLE (mm)	SCREW FIX (OPT.)	PACK QTY
CR161N/1	16	16	10.7	7	4	5	-	100
CR251N/1	25	25	12.7	10.9	8	13	2 x M3	100
CR281N/1	28	28	14	16	12	18	2 x M3	100

G CLIPS

This self adhesive cable clip offers durability, excellent chemical resistance and electrical insulation. Two clips are assembled on a backing strip, which makes the removal of the clip from the strip far easier to achieve. The adhesive consists of a white polyethylene foam, coated on both sides with a high performance synthetic rubber adhesive, providing a particularly high level of instant tack combined with high levels of adhesion. Ideal for use in applications which are difficult to access, or for areas where a self-adhesive is the only fixing method.

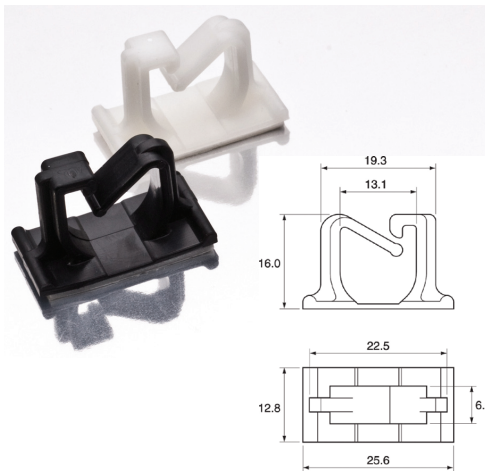
SPECIFICATION:

COLOUR OPTIONS: Natural or Black

MATERIAL: Nylon 6.6

OPERATING TEMPERATURE: -40°C to +70°C

CHEMICAL RESISTANCE: Black is resistant to UV radiation.



PART NO. NATURAL	PART NO. BLACK	PACK QTY
G25N/2	G25B/2	100

MASONRY MOUNTS

Masonry mounts are used for fixing cables to walls without using screws or plugs. Simply drill a hole (6 or 7mm) and push fit. For use with cable ties up to 9mm wide.

SPECIFICATION:

COLOUR OPTIONS: Black

MATERIAL: Nylon 6.6



PART NO.	LENGTH (mm)	HOLE SIZE (mm)	MAX. TIE WIDTH (mm)	PACK QTY
CMM 1	45	6	9.0	100
CMM 1L	45	7	9.0	100

SCREW FIXED CRADLES & EYELET MOUNTS

Screw fix cradles are designed to provide a secure fixing for heavier cables. These cradles can be simply installed with a screw or bolt. Used in many different industries for a secure fixing. Screw fixed eyelet mounts to take cable ties up to 4.8mm wide to take an M4 screw Suitable for mounting in restricted spaces.

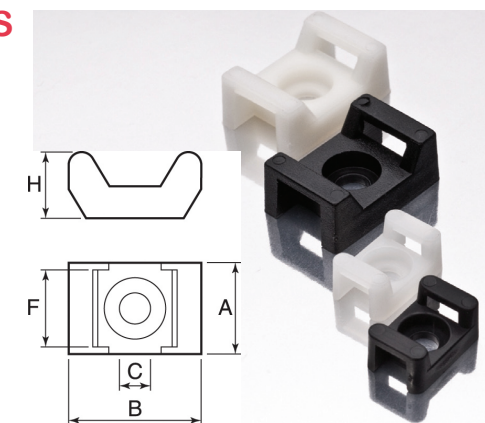
SPECIFICATION:

COLOUR OPTIONS: Natural or Black

MATERIAL: Nylon 6.6

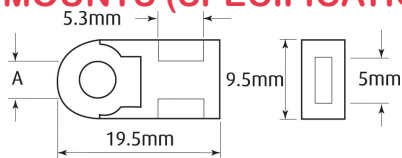
OPERATING TEMPERATURE: -40°C to +80°C

CHEMICAL RESISTANCE: UV radiation.

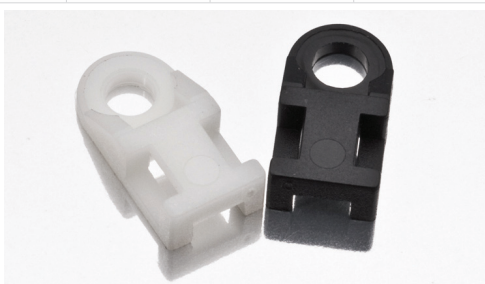


PART NO. NATURAL	PART NO. BLACK	A (mm)	B (mm)	C (mm)	F (mm)	H (mm)	PACK QTY
CSFM1	CSFM1B	9.5	15	3.5	5	7	100
CSFM2	CSFM2B	14.6	22.5	5	9.3	11	100

EYELET MOUNTS (SPECIFICATION ABOVE)



PART NO. NATURAL	PART NO. BLACK	DIM A (mm)	SCREW FIX	PACK QTY
CLPM1	CLPM1B	4.3	M4	100



Cablecraft House, Circle Business Centre, Blackburn Road, Houghton-Regis, Bedfordshire, LU5 5DD.
Phone: 01582 606033 • **Fax:** 01582 606063 • **Email:** sales@cablecraft.co.uk • **Web:** www.cablecraft.co.uk

VAT NO. GB 639 920 900 • CO. REG. NO. 2478297