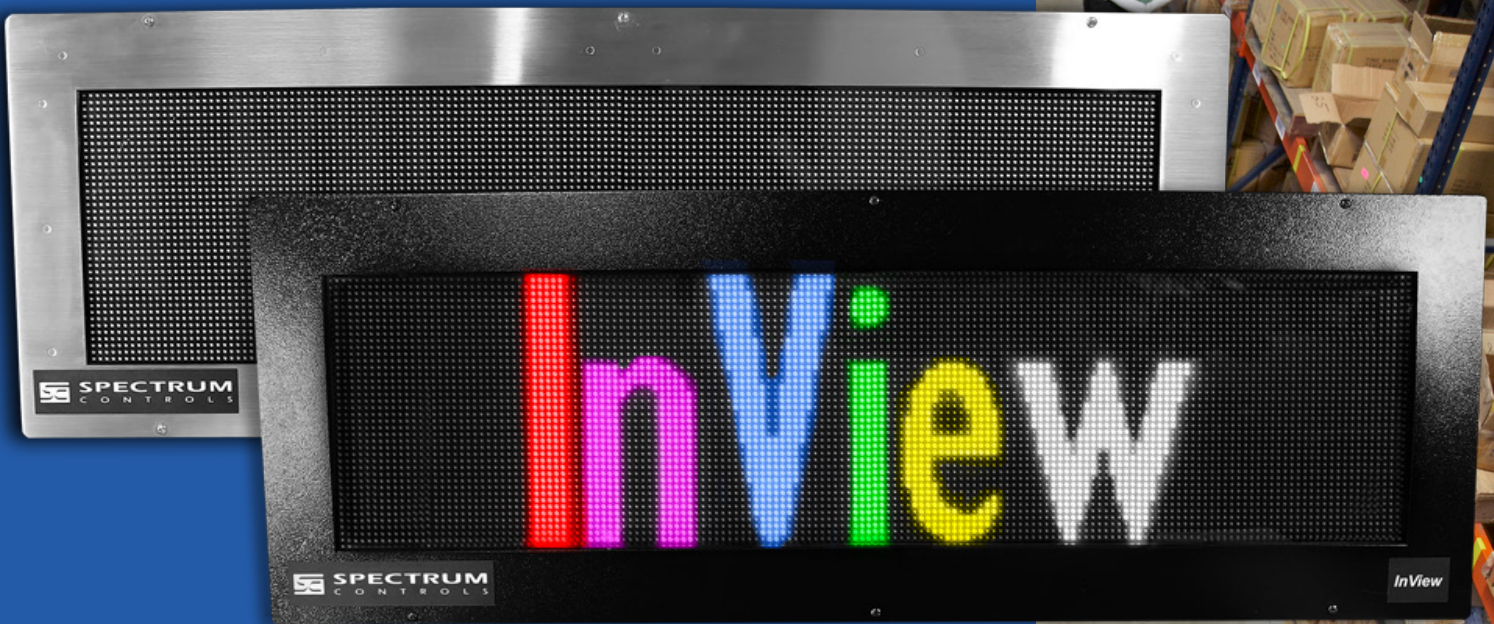


# *InView*<sup>TM</sup>

INDUSTRIAL MESSAGE DISPLAYS



*Industrial indoor LED displays  
to communicate with your team  
from up to 450 feet away!*

[www.spectrumcontrols.com](http://www.spectrumcontrols.com)

 **SPECTRUM**  
C O N T R O L S



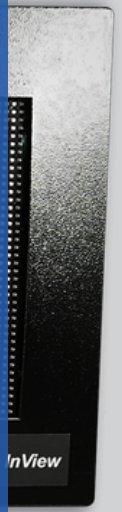
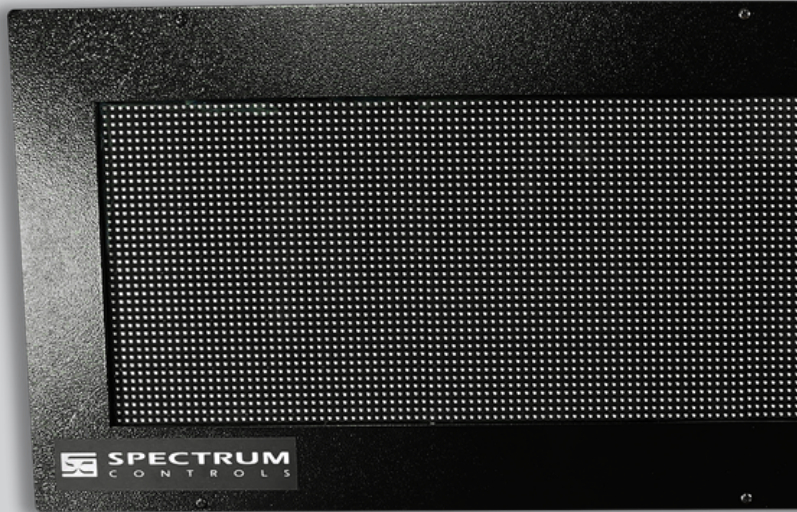
Whether it's process alarming, safety messages, inventory data or just congratulating the team, InView delivers the right information at the right time to the right place. Choose from 13 different models, offering varying display sizes, colors, fonts, and effects.

- Preferred compatibility to Rockwell Automation controllers.
- Supports Modbus TCP/IP, EtherNet/IP & EtherNet TCP/IP.
- Fully licensed Rockwell Automation technology. Rockwell TechConnect support is included with your purchase.
- Industry tested and proven display technology with message visibility from up to 450 feet away!
- Dynamic messaging, with the use of variables, for real-time information.
- Intuitive browser-based & OS independent setup—no need for separate software.
- Vastly superior viewing angle than most LCD & LED displays.

# InView Displays

We are dedicated to delivering the indoor displays you want, with the functionality you need, to keep your team informed and to maintain productivity.

“ All InView displays are purpose-built for the industrial marketplace. We understand that you want to install a display that will outlast the screws holding it in place. Our goal is to deliver scalable, real-time information that fully integrates into your Rockwell Automation systems. ”



## NEW InView Displays!

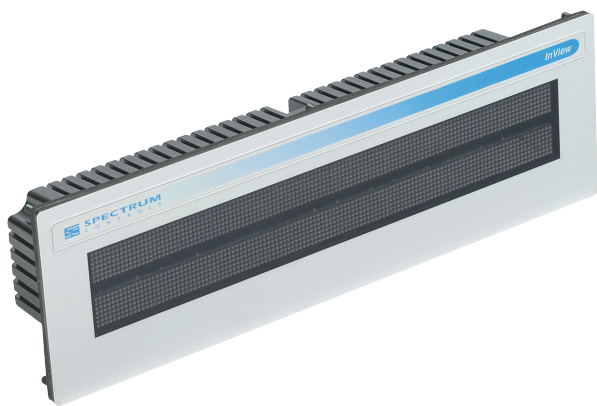
Now, communicate your productivity, status and alarm conditions on the brightest, most colorful and efficient InView displays ever engineered!

Our new displays are brighter and require less power than their predecessors.

2706-P92C2-SC (shown left)  
2706-P42C2-SC (coming 2019)



“ Fully licensed Rockwell Automation technology; Rockwell TechConnect support included with your purchase ”



## The Right Size

Whether you need a display that's a foot, six feet, or any length in between, we have the right size for you. InView displays are available in multiple sizes that range up to 5 lines of text with over 7,500+ pixels.

2706-P22R-SC shown left.

## Dynamic Messages

InView displays allow for real-time dynamic messages using input variables at a vastly superior viewing angle than most LCD or LED displays.

2706-P92C-SC shown right.



# InView Display Specifications

2706-P...-SC	Display Size	Lines	Viewing Distance	Max. Character Height	Enclosure	Voltage	Weight
<b>P22R</b>	12" x 2" (30 x 5.1 cm)	2	25' (7.6 m)	0.7" (per line)	NEMA Type 4 when panel mounted	24V DC	1.87 lbs (0.85 kg)
<b>P42R</b>	36" x 4.8" (91.4 x 12.2 cm)	1 - 2	200' (60 m)	4.8"	NEMA Type 12	120-240V AC 50/60Hz	28 lbs (12.7 kg)
<b>P42C</b>	36" x 4.8" (91.4 x 12.2 cm)	1 - 2	200' (60 m)	4.8"	NEMA Type 12	120-240V AC 50/60Hz	28 lbs (12.7 kg)
<b>P42C2</b>	36" x 4.8" (91.4 x 12.2 cm)	1 - 2	200' (60 m)	4.8"	NEMA Type 12	120-240V AC 50/60Hz	28 lbs (12.7 kg)
<b>P44R</b>	72" x 4.8" (182.9 x 12.2 cm)	1 - 2	200' (60 m)	4.8"	NEMA Type 12	120-240V AC 50/60Hz	50 lbs (22.7 kg)
<b>P44C</b>	72" x 4.8" (182.9 x 12.2 cm)	1 - 2	200' (60 m)	4.8"	NEMA Type 12	120-240V AC 50/60Hz	50 lbs (22.7 kg)
<b>P44C2</b>	72" x 4.8" (182.9 x 12.2 cm)	1 - 2	200' (60 m)	4.8"	NEMA Type 12	120-240V AC 50/60Hz	50 lbs (22.7 kg)
<b>P72CN1</b>	36" x 7.2" (91.4 x 18.3 cm)	1 - 4	350' (107 m)	7.2"	NEMA Type 4X, SST enclosure (IP66)	120-240V AC 50/60Hz	60 lbs (27.2 kg)
<b>P72CN2</b>	36" x 7.2" (91.4 x 18.3 cm)	1 - 4	350' (107 m)	7.2"	NEMA Type 4 (IP66)	120-240V AC 50/60Hz	60 lbs (27.2 kg)
<b>P74CN1</b>	60" x 7.2" (152.4 x 18.3 cm)	1 - 4	350' (107 m)	7.2"	NEMA Type 4X, SST enclosure (IP66)	120-240V AC 50/60Hz	80 lbs (36.3 kg)
<b>P74CN2</b>	60" x 7.2" (152.4 x 18.3 cm)	1 - 4	350' (107 m)	7.2"	NEMA Type 4 (IP66)	120-240V AC 50/60Hz	80 lbs (36.3 kg)
<b>P92C2</b>	39.7" x 9.9" (100.8 x 25.1 cm)	1 - 5	450'+ (137 m)	9.9"	NEMA Type 4 (IP66)	120-240V AC 50/60Hz	62 lbs (28.1 kg)
<b>P92C2X</b>	39.7" x 9.9" (100.8 x 25.1 cm)	1 - 5	450'+ (137 m)	9.9"	NEMA Type 4X SST enclosure (IP66)	120-240V AC 50/60Hz	62 lbs (28.1 kg)
<b>P94C2</b>	69.4" x 9.9" (176.3 x 25.1 cm)	1 - 5	450'+ (137 m)	9.9"	NEMA Type 4 (IP66)	120-240V AC 50/60Hz	94 lbs (42.6 kg)
<b>P94C2X</b>	69.4" x 9.9" (176.3 x 25.1 cm)	1 - 5	450'+ (137 m)	9.9"	NEMA Type 4X SST enclosure (IP66)	120-240V AC 50/60Hz	94 lbs (42.6 kg)

P##R = Red, P##C = Tricolor, P##C2 = Full-color.

Operating Temp: 0°C to 55°C (32°F to 131°F). - P9XC2 displays are rated at 0°C to 60°C (32°F to 140°F)

Storage Temp for all displays is -25°C to 70°C (-13°F to 158°F).

All displays are CE, UL/ETL & C-Tick certified.

# Easy-to-Use Comms Module

Supports Modbus TCP/IP, EtherNet/IP & EtherNet TCP/IP!

Protect your investment with a browser-based & OS-independent communications module. With virtually every configuration just two-clicks away, our easy-to-use setup enables you to spend less time learning and more time doing.



## Configuration

Easily add or edit messages using one of our many built-in features to create the information you want to see.

Easy Tag functionality eliminates the need for special PLC add on instructions.



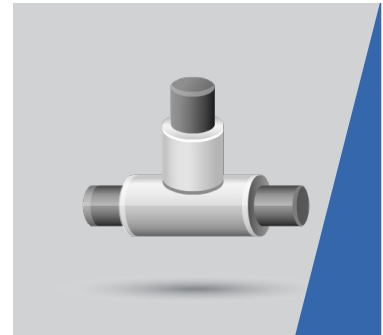
## Diagnostics

Keep your displays up and running with easy access to your system logs, status, and reports.



## Maintenance

Take control of your solution with firmware updates, message import/export, and custom characters.



## Network

Simple network setup enables you to easily configure a static IP or a DHCP client.

# Comms Module Selection Guide

EtherNet/IP is the preferred deployment method. Other deployment methods are available, but only while supplies last. Each display requires a comms module for proper configuration.

## Communications Module

	2706-PENETP2-SC	2706-PENETM2-SC	2706-PENETK2-SC
<b>P2 displays</b>	✓	•	•
<b>P4 displays</b>	•	✓	•
<b>P7 displays</b>	•	•	✓
<b>P9 displays</b>	•	•	✓
<b>EtherNet/IP</b>	✓	✓	✓
<b>EtherNet TCP/IP</b>	✓	✓	✓
<b>Modbus TCP/IP</b>	✓	✓	✓

## InView Accessories

Catalog No.	Description
*2706-NC13-SC	RS-232 operating/programming cable, 9-pin D shell to 9-pin D shell, 5 m (16.4')
2706-NE1-SC	NEMA Type 12/13 enclosure for 2706-P22R-SC display
*2706-PCABLE1-SC	InView program/download cable
2706-PNR2-SC	Adapter plate for installing 2706-P22R-SC in a DL40 4-line display panel opening
*2706-PSW1-SC	InView messaging software with ActiveX control (only needed for Legacy Comms). Requires Windows XP

\*Legacy product - Accessory only available for a Legacy Comms Module



Corporate Office:

1705 132nd Ave NE

Bellevue, WA 98005

Telephone : +1 (425) 746-9481

Email: [spectrum@spectrumcontrols.com](mailto:spectrum@spectrumcontrols.com)

