

445L Muting Controller Box



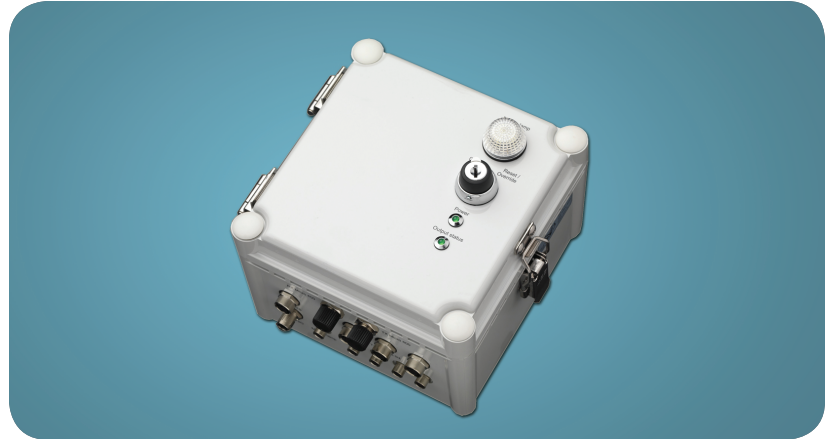
Robust, compact solutions for muting applications

Features

- Muting of GuardShield™ Safe 4, GuardShield Micro 400 or GuardShield (440L) Safety Light Curtains
- Muting of safety laser scanner (or other Safety Sensors with 2 OSSD outputs)
- Muting types: 2 Sensor L-Type, 2 Sensor T-Type, 2 Sensor T-Type with enable signal, 4 Sensor T-Type
- Muting sensors can be adjusted according to application requirements
- Mute dependent override function is integrated
- Muting disable function and muting lamp monitored functions are integrated
- 2x OSSD semiconductor outputs
- Category 4, Performance Level e according ISO-EN 13849-1
- SIL CL3 according ISO-EN 62061

Benefits

- Reduced application set-up and faster set-up time.
- One solution for all muting applications, even good for complicated set-ups.
- Much less logistic efforts.



Some processes require that a machine must stop when personnel enter the dangerous area, yet remain running when automatically-fed material enters. In such a case, a muting function is required.

The Allen-Bradley® 445L Muting Controller Box from Rockwell Automation® offers a comprehensive solution even for very complex muting applications. It allows an easy connection of all Rockwell Automation GuardShield™ safety light curtain products or safety laser scanners. Features like a muting lamp, a reset and override function are already integrated and ready for use. The box is designed to connect two or four muting sensors depending on the requirements of the application.

Typically the following muting set-ups are for:

- L-configuration with 2 muting sensors for uni-directional
- T-configuration with 2 or 4 muting sensors for uni- and bi-directional

Out of the box the product is ready for a T-configuration with 2 muting sensors for bi-directional operation and manual reset. All further settings can be arranged using the optical interface: 445L-AF6150 and the software supplied with the interface.

The muting controller box offers some very helpful and valued functions:

- A blocked entrance can easily be cleared with an integrated override function
- A time recording function to verify muting settings
- A muting signal filter function to avoid stops caused by irregular sized objects
- Light curtain interrupt ignore function as part of muting sequence

The 445L muting controller box meets IP65 certification and is ideal for a wide variety of applications, including material handling, packaging, logistics, conveyors and robotics.

For industrial applications that require a sturdy mounting stand, Allen-Bradley offers the 445L Mounting Stand. This is a flexible solution for attaching safety light curtains, mirrors or muting accessories.

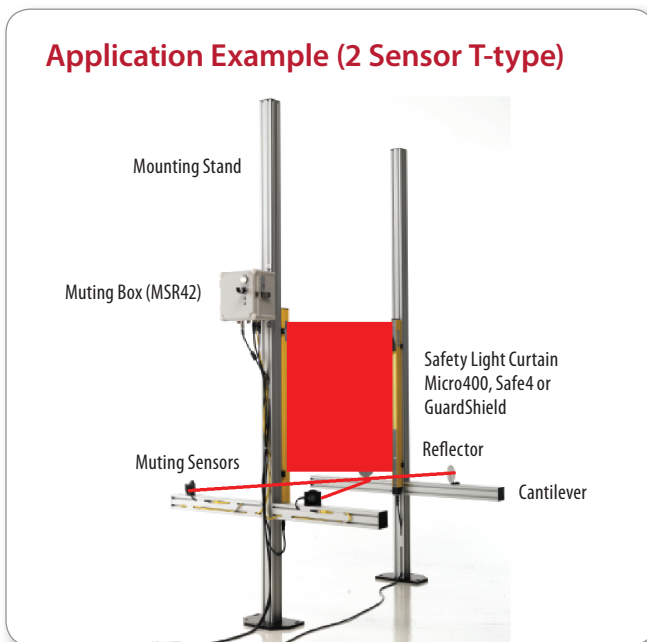
LISTEN.
THINK.
SOLVE.

Product Selection	Required Accessories	Optional Accessories
Catalog number: 445L-AMUTBOX1	<ul style="list-style-type: none"> • Connection cables muting box • Safety light curtain + patchcords • Muting sensors + patchcords & mounting brackets 	<ul style="list-style-type: none"> • Optical Interface Tool (445L-AF6150) • Mounting stand (445L-AMSTD2M) • Cantilever arm (445L-AMSTDMUT)
Description: Muting Controller Box (MSR42)		

Possible Muting Applications

	Muting Type				Safety Light Curtain				Muting Sensor			Comments
	2 Beam, T-type	2 Beam, L-type	4 Beam, T-type	2 Beam, T-type wEnable	GS Safe 2 or Safe 4	GS Micro 400	Guard-Shield (440L)	Other Safety Sensor	RightSight	VisiSight	Other	
Default	✓				✓		✓	✓	✓	✓	✓	Default setting
Selectable		✓			✓	✓	✓	✓	✓	✓	✓	Configurable with MSR42 safety software & download with optical interface
Selectable			✓			✓			✓	✓	✓	
Selectable				✓		✓			✓	✓	✓	

Application Example (2 Sensor T-type)



CANTILEVER ARM
 RA cat #: 445L-AMSTDMUT
 Length: 500 mm
 Cross section: 60x60mm
 Material: anodized aluminum
 Included: mounting angle for reflector

MOUNTING STAND
 RA cat #: 445L-AMSTD2M
 Length: 2000 mm
 Cross section: 60 x 60 mm
 Material: anodized aluminum
 Base plate: anodized aluminum
 Size: 240 x 150 mm
 Leveling: 3 screws



Allen-Bradley, GuardShield and Rockwell Automation are trademarks of Rockwell Automation, Inc. Trademarks not belonging to Rockwell Automation are property of their respective companies.

www.rockwellautomation.com

Power, Control and Information Solutions Headquarters

Americas: Rockwell Automation, 1201 South Second Street, Milwaukee, WI 53204-2496 USA, Tel: (1) 414.382.2000, Fax: (1) 414.382.4444

Europe/Middle East/Africa: Rockwell Automation NV, Pegasus Park, De Kleetlaan 12a, 1831 Diegem, Belgium, Tel: (32) 2 663 0600, Fax: (32) 2 663 0640

Asia Pacific: Rockwell Automation, Level 14, Core F, Cyberport 3, 100 Cyberport Road, Hong Kong, Tel: (852) 2887 4788, Fax: (852) 2508 1846