



# ***DOME-TOP***<sup>®</sup> Barb Ty Cable Ties With Stainless Steel Locking Barbs



## **Complete Selection of Barb Ty Cable Ties**

- Low Thread Force
- High Strength
- Smooth Round Edges

Sold through your local *PANDUIT* Distributor



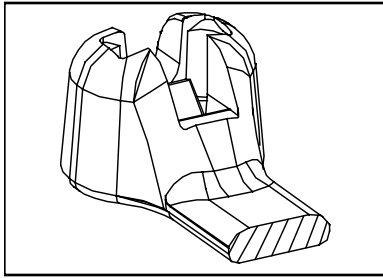
Contact the factory for registrar  
and product scope information.



# PANDUIT® DOME-TOP® Barb Ty Cable Ties

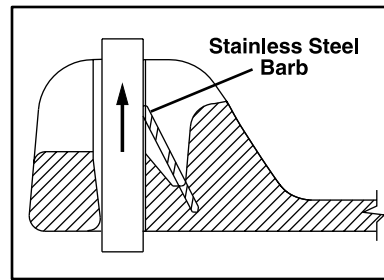
## DOME-TOP® Barb Ty Cable Tie Features/Benefits:

### 1. DOME-TOP HEAD



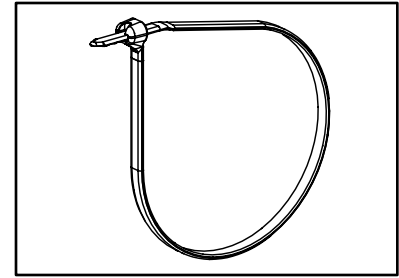
- Unique patented design
- Round smooth edges
- No irritation to installer's hands

### 2. STAINLESS STEEL BARB



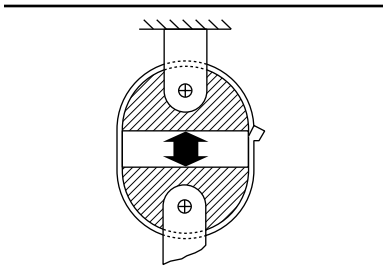
- Made of 316 corrosion resistant stainless steel
- Provides consistent performance and reliability for users who prefer a cable tie with a metal barb
- Infinitely adjustable for tight bundles through its entire bundle range

### 3. LOW THREADING FORCE



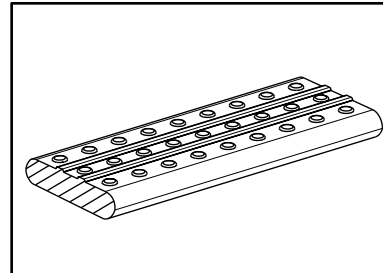
- Reduces installer fatigue
- Increases productivity

### 4. HIGH TENSILE STRENGTH



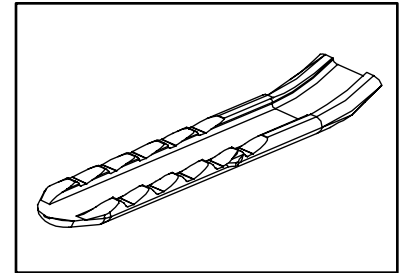
- Exceeds industry and Aerospace Standard SAE (AS23190) standards
- Available in four loop tensile strengths from 18 lbs (80N) to 120 lbs. (534N) to provide a wide selection

### 5. ANTI-SLIP STRAP BODY



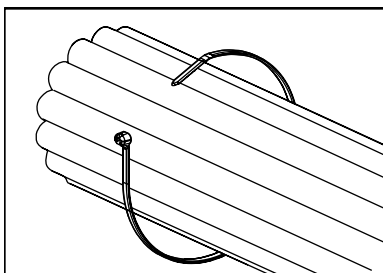
- Ribbed and stippled strap body prevents axial and lateral movement

### 6. FINGER TIP GRIP



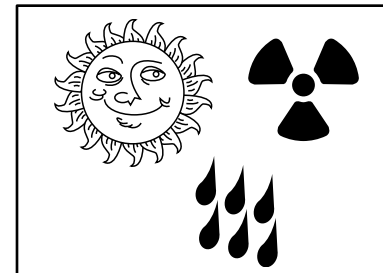
- Exclusively designed finger grip is available on all sizes of DOME-TOP Barb Ty Cable Ties to assure positive grip during threading of the tie

### 7. CURVED TIP



- Orients tip toward head to speed installation; lowers installed cost
- Faster initial threading
- Easier to pick-up from flat sur-

### 8. MATERIAL/SIZE AVAILABILITY



- Available in lengths from 4.0" (107mm) to 30.7" (780mm) to meet a variety of applications
- Several materials available for special environments: Natural 6.6 nylon, weather resistant black 6.6 nylon, heat stabilized 6.6 nylon and 11 different colors.

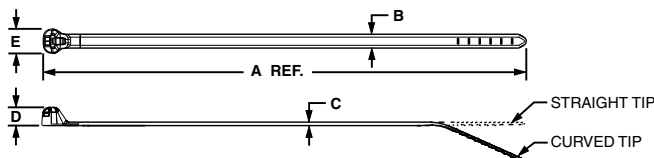
# PANDUIT® DOME-TOP® Barb Ty Cable Ties

## DOME-TOP® Barb Ty Nylon 6.6 Locking Cable Ties

- Available in Miniature, Intermediate, Standard and Light Heavy Cross Section
- Bundle diameters up to 9.00" (229mm)
- Available in natural, weather resistant\*\* and heat stabilized black nylon\*\*\*, and 11 different colors
- Tool or hand installed



Side View Front View Side View Front View



Part Number †		Length A In. (mm)	Width B In. (mm)	Thickness C In. (mm)	Head Height D In. (mm)	Head Width E In. (mm)	Max. Bundle Diameter In. (mm)	Min. Loop Tensile Strength Lbs. (N)	Recommended PANDUIT Installation Tool Part Number	Packaging*			
Std. Pkg.	Bulk Pkg.									Std. Pkg. Qty.	Std. Ctn. Qty.	Bulk Pkg. Qty.	Bulk Ctn. Qty.
<b>MINIATURE CROSS SECTION</b>													
BT1M-C	BT1M-M	4.0 (102)	.095 (24)	.036 (0.9)	.156 (4.0)	.172 (4.4)	.90 (23)	18 (80)	GTS, GS2B, PPTS or STS2	100	1000	1000	50000
BT1.5M-C	BT1.5M-M	6.3 (160)		1.50 (38)		100	1000			1000	25000		
BT2M-C	BT2M-M	7.9 (201)		2.00 (51)		100	1000			1000	25000		
BT4M-C	BT4M-M	14.2 (361)		4.00 (102)		100	1000			1000	10000		

<b>INTERMEDIATE CROSS SECTION</b>													
BT1.5I-C	BT1.5I-M	6.1 (155)	.141 (3.6)	.041 (1.0)	.185 (4.7)	.248 (6.3)	1.50 (38)	40 (178)	GTS, GS2B, PPTS or STS2	100	1000	1000	25000
BT2I-C	BT2I-M	8.0 (203)		2.00 (51)		100	1000			1000	25000		
BT3I-C	BT3I-M	11.3 (288)		3.00 (76)		100	1000			1000	10000		
BT4I-C	BT4I-M	14.3 (363)		4.00 (102)		100	1000			1000	10000		

<b>STANDARD CROSS SECTION</b>													
BT2S-C	BT2S-M	8.0 (203)	.185 (4.7)	.045 (1.2)	.220 (5.6)	.320 (8.1)	2.00 (51)	50 (222)	GTS, GS2B, GS4H, PPTS, STS2 or STH2	100	1000	1000	10000
BT3S-C	BT3S-M	12.0 (305)		.052 (1.3)		3.00 (76)	100			1000	1000	10000	
BT4S-C	BT4S-M	15.1 (384)		4.00 (102)		100	1000			1000	5000		

<b>LIGHT HEAVY CROSS SECTION (Straight Tip)</b>													
BT2LH-L	BT2LH-TL	8.7 (221)	.275 (7.0)	.065 (1.7)	.320 (8.1)	.520 (13.2)	2.00 (51)	120 (534)	GS4H, GS4EH, FPTEH, STH2 or ST2EH	50	500	250	2500
BT3LH-L	BT3LH-TL	11.8 (300)					3.00 (76)			50	500	250	2500
BT4LH-L	BT4LH-TL	14.9 (378)					4.00 (102)			50	500	250	2500
BT5LH-L	BT5LH-C	18.1 (460)					5.00 (127)			50	500	100	2000
BT6LH-L	BT6LH-C	21.2 (538)					6.00 (152)			50	500	100	2000
BT7LH-L	BT7LH-C	24.4 (620)					7.00 (178)			50	500	100	2000
BT8LH-L	BT8LH-C	27.5 (699)					8.00 (203)			50	500	100	2000
BT9LH-L	BT9LH-C	30.7 (780)					9.00 (229)			50	500	100	1000

\*Order the number of pieces required in multiples of packaging quantities.

\*\* For weather resistant ties, add -0 to the suffix (Example: BT2S-C0).

\*\*\* For heat stabilized black nylon ties, add -30 to the suffix (Example: BT2S-C30).

† Part Number shown for natural nylon. List of colors and materials available upon request.

# PANDUIT® DOME-TOP® Barb Ty Cable Ties

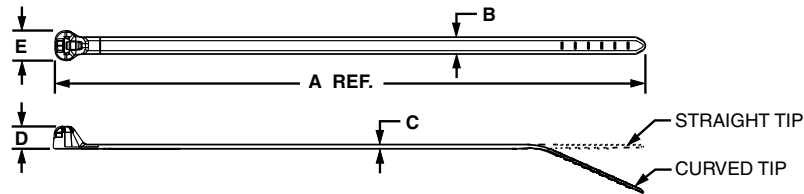
## DOME-TOP® Barb Ty

Nylon 6.6 Heat Stabilized Natural (39)

- Available in Miniature, Intermediate, Standard and Light Heavy Cross Section
- Bundle diameters up to 4.00" (102mm)
- Temperature rating: -40°F (-40°C) to 221°F (105°C)
- Tool or hand installed



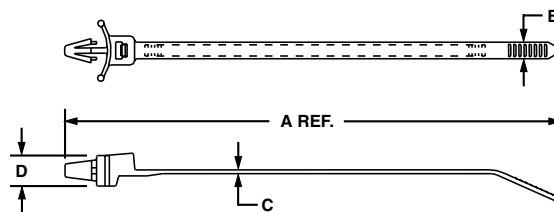
SIDE VIEW FRONT VIEW



Bulk Pkg. Part Number ‡	Length A In. (mm)	Width B In. (mm)	Thickness C In. (mm)	Head Height D In. (mm)	Head Width E In. (mm)	Max. Bundle Diameter In. (mm)	Min. Loop Tensile Strength Lbs. (N)	Recommended PANDUIT Installation Tool Part Number	Packaging*	
									Bulk Pkg. Qty.	Bulk Ctn. Qty.
<b>MINIATURE CROSS SECTION</b>										
BT1M-M39	4.0 (102)	.095 (2.4)	.036 (0.9)	.156 (4.0)	.172 (4.4)	.90 (23)	18 (80)	GTS, GS2B, PPTS or STS2	1000	5000
<b>INTERMEDIATE CROSS SECTION</b>										
BT1.5I-M39	6.1 (155)	.141 (3.6)	.041 (1.0)	.185 (4.7)	.248 (6.3)	1.50 (38)	40 (178)	GTS, GS2B, PPTS or STS2	1000	25000
<b>STANDARD CROSS SECTION</b>										
BT2S-M39	8.0 (203)	.185 (4.7)	.045 (1.2)	.220 (5.6)	.320 (8.1)	2.00 (51)	50 (222)	GTS, GS2B, GS4H, PPTS, STS2 or STH2	1000	10000
BT3S-M39	12.0 (305)		.052 (1.3)			3.00 (76)			1000	10000
BT4S-M39	15.1 (384)		4.00 (102)			1000			5000	
<b>LIGHT HEAVY CROSS SECTION (Straight Tip)</b>										
BT4LH-TL39	14.9 (378)	.275 (7.0)	.065 (1.7)	.320 (8.1)	.520 (13.2)	4.00 (102)	120 (534)	GS4H, GS4EH, PPTTEH, STH2 or ST2EH	250	2500

## DOME-TOP Barb Ty Nylon 6.6 Winged Push Mount Ties Winged Push Mount Ties

- Used to attach a bundle to a surface such as a control panel
- Easily pressed into a pre-drilled hole and locks into place
- Provides constant tension creating a stable and secure fixture



Part Number ‡	Length A In. (mm)	Width B In. (mm)	Thickness C In. (mm)	Head Height D In. (mm)	Nominal Panel E In. (mm)	Max. Panel Thickness In. (mm)	Max. Bundle Dia. In. (mm)	Min. Loop Tensile Strength Lbs. (N)	Recommended PANDUIT Installation Tool Part Number	Bulk Pkg. Qty.	Bulk Ctn. Qty.
<b>INTERMEDIATE CROSS SECTION</b>											
BW1.5I-D	6.6 (168)	.141 (3.6)	.041 (1.0)	.280 (7.1)	.187 (4.7)	.093 (2.4)	1.50 (38)	40 (177)	GTS, GS2B, PPTS or STS2	500	5000
<b>STANDARD CROSS SECTION</b>											
BW2S-D	8.5 (216)	.185 (4.7)	.052 (1.3)	.370 (8.4)	.252 (6.4)	.156 (4.0)	2.00 (51)	50 (222)	GTS, GS2B, PPTS or STS2	500	5000

\*Order the number of pieces required in multiples of packaging quantities.

‡Part number shown for heat stabilized natural nylon. List of colors and materials available upon request.

# PANDUIT® DOME-TOP® Barb Ty Cable Ties

## DOME-TOP® Barb Ty

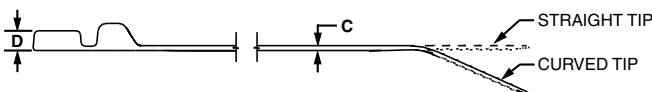
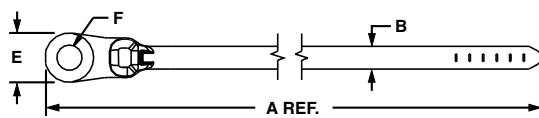
### Nylon 6.6

### Clamp Ties

- Used to secure a bundle to another surface
- The design allows for bundling before or after screwing clamp in place
- Available in Standard and Light Heavy Cross Section
- Bundle diameters up to 4.00" (102mm)
- Available in natural, weather resistant\*\* and heat stabilized black nylon\*\*\*



Side View Front View Side View Front View



Part Number‡		Length A In. (mm)	Width B In. (mm)	Thickness C In. (mm)	Boss Height D In. (mm)	Boss Width E In. (mm)	Hole Dia. F In. (mm)	Screw Size	Max. B undle Diameter In. (mm)	Min L. oop Tensile Strength Lbs. (N)	Recommended PANDUIT Installation Tool Part Number	Packaging*			
Std. Pkg.	Bulk Pkg.											Std. Pkg. Qty.	Std. Ctn. Qty.	Bulk Pkg. Qty.	Bulk Ctn. Qty.
<b>MINIATURE CROSS SECTION</b>															
BC1M-S4-C	BC1M-S4-M	4.6 (117)	.095 (2.4)	.046 (1.2)	.156 (4.0)	.234 (5.9)	.124 (3.15)	#4 (M2.5)	.90 (23)	18 (80)	GTS, GS2B, PPTS or STS2	100	1000	1000	50000
BC2M-S4-C	BC2M-S4-M	8.3 (211)										100	1000	1000	25000
<b>INTERMEDIATE CROSS SECTION</b>															
BC1.5I-S8-C	BC1.5I-S8-M	6.6 (168)	.141 (3.6)	.041 (1.0)	.166 (4.2)	.330 (8.4)	.180 (4.57)	#8 (M4)	1.5 (38)	40 (178)	GTS, GS2B, PPTS or STS2	100	1000	1000	25000
<b>STANDARD CROSS SECTION</b>															
BC2S-S10-C	BC2S-S10-D	8.5 (216)	.185 (4.7)	.052 (1.3)	.160 (4.1)	.400 (10.2)	.206 (5.2)	#10 (M5)	2.00 (51)	50 (222)	GTS, GS2B, GS4H, PPTS, STS2 or STH2	100	1000	500	10000
BC3S-S10-C	BC3S-S10-D	12.5 (318)							100			1000	500	10000	
BC4S-S10-C	BC4S-S10-D	15.6 (396)							100			1000	500	5000	
<b>LIGHT HEAVY CROSS SECTION (Straight Tip)</b>															
BC4LH-S25-L	BC4LH-S25-TL	15.5 (394)	.275 (7.0)	.065 (1.7)	.265 (13.2)	.520 (13.2)	.260 (6.6)	1/4 (M8)	4.00 (102)	120 (534)	GS4H, GS4EH PPTEH, STH2 or ST2EH	50	500	250	2500

\* Order the number of pieces required in multiples of packaging quantities.

\*\*F or weather resistant clamp ties, add -0 to the suffix (Example: BC2S-S10-M0).

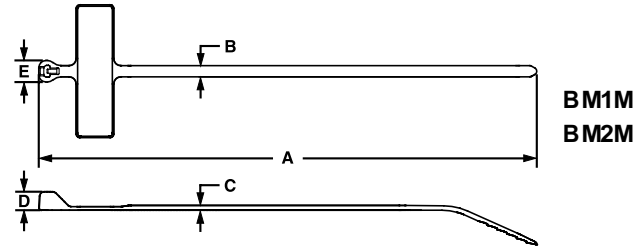
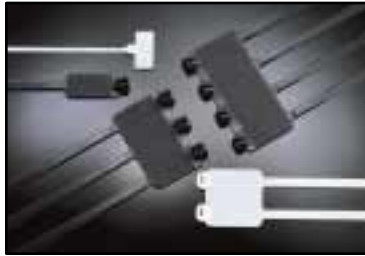
\*\*\*For heat stabilized black nylon clamp ties, add -30 to the suffix (Example: BC2S-S10-M30).

‡ Part Number shown for natural nylon. List of colors and materials available upon request.

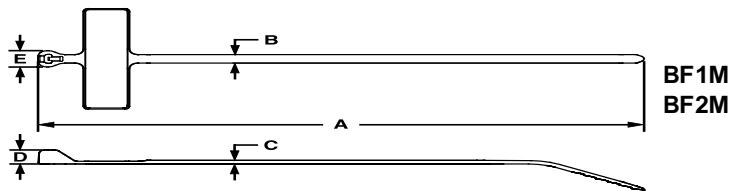
# PANDUIT® DOME-TOP® Barb Ty Cable Ties

## DOME-TOP® Barb Ty Nylon 6.6 Marker & Flag Ties

- Used to fasten and identify bundles at the same time
- Can be marked with PANDUIT® Marker Pens, Custom Hot Stamping Service or Computer Printable Labels.
- Available in Miniature and Standard Cross Section
- Bundle diameters up to 4.00" (102mm)
- Available in natural and weather resistant nylon\*\*



Part Number‡	Length A In. (mm)	Width B In. (mm)	Thickness C In. (mm)	Head Height D In. (mm)	Head Width E In. (mm)	Write-on Area In. (mm)	Max. Bundle Dia. In. (mm)	Min. Loop Tensile Strength Lbs. (N)	Recommended PANDUIT Installation Tool Part Number	Packaging*				
										Std. Pkg. Qty.	Std. Ctn. Qty.	Bulk Pkg. Qty.	Bulk Ctn. Qty.	
<b>MINIATURE CROSS SECTION</b>														
BM1M-C	4.2 (107)	.095 (2.4)	.046 (1.2)	.156 (4.0)	.182 (4.6)	.29 (7.4) x 1.09 (27.7)	.90 (23)	18 (80)	GTS, GS2B, PPTS or STS2	100	1000	1000	25000	
BM2M-C	7.9 (201)						2.00 (51)			100	1000	1000	25000	



Part Number‡	Length A In. (mm)	Width B In. (mm)	Thickness C In. (mm)	Head Height D In. (mm)	Head Width E In. (mm)	Write-on Area In. (mm)	Max. Bundle Dia. In. (mm)	Min. Loop Tensile Strength Lbs. (N)	Recommended PANDUIT Installation Tool Part Number	Packaging*				
										Std. Pkg. Qty.	Std. Ctn. Qty.	Bulk Pkg. Qty.	Bulk Ctn. Qty.	
<b>MINIATURE CROSS SECTION</b>														
BF1M-C	4.6 (116)	.095 (2.4)	.046 (1.2)	.156 (4.0)	.182 (4.6)	.39 (9.1) x .81 (20.6)	.90 (23)	18 (80)	GTS, GS2B, PPTS or STS2	100	1000	1000	25000	
BF2M-C	8.3 (211)						2.00 (51)			100	1000	1000	25000	

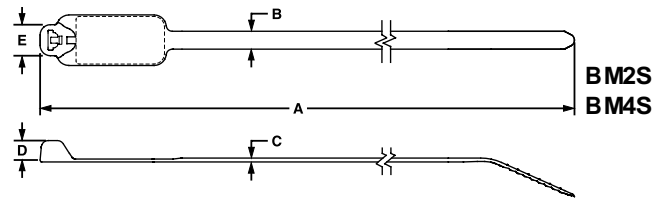
\* Order the number of pieces required in multiples of packaging quantities.

\*\* For Weather Resistant ties, add -0 to the suffix (example: BM1M-C0).

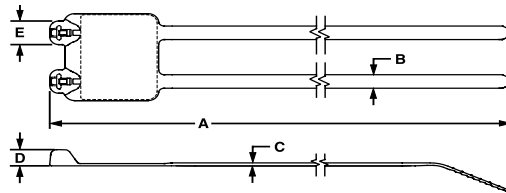
‡ Part number shown for natural nylon.

# PANDUIT® DOME-TOP® Barb Ty Cable Ties

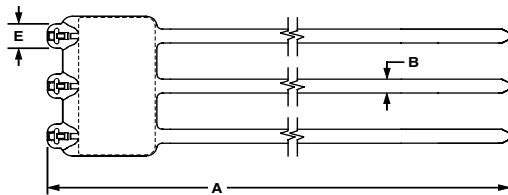
## DOME-TOP® Barb Ty Nylon 6.6 Marker Ties



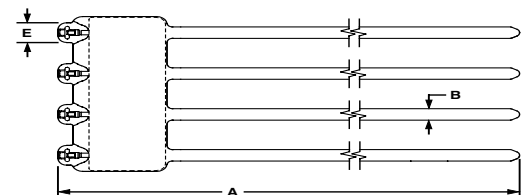
Part Number‡	Length A In. (mm)	Width B In. (mm)	Thickness C In. (mm)	Head Height D In. (mm)	Head Width E In. (mm)	Write-on Area In. (mm)	Max. Bundle Dia. In. (mm)	Min. Loop Tensile Strength Lbs. (N)	Recommended PANDUIT Installation Tool Part Number	Packaging*			
										Std. Pkg. Qty.	Std. Ctn. Qty.	Bulk Pkg. Qty.	Bulk Ctn. Qty.
<b>STANDARD CROSS SECTION</b>													
BM2S-C	8.0 (203)	.185 (4.7)	.045 (1.2)	.220 (5.6)	.320 (8.1)	49 (12.4) x .91 (23.1)	2.00 (51)	50 (222)	GTS, GS2B, GS4H or STH2	100	1000	500	10000
BM4S-C	15.1 (384)		.052 (1.3)			50 (12.7) x 2.13 (54.1)				4.00 (102)	100	1000	500



B2M2S



B3M2S



B4M2S

Part Number‡	Length A In. (mm)	Width B In. (mm)	Thickness C In. (mm)	Head Height D In. (mm)	Head Width E In. (mm)	Write-on Area In. (mm)	Max. Bundle Dia. In. (mm)	Min. Loop Tensile Strength Lbs. (N)	Recommended PANDUIT Installation Tool Part Number	Packaging*			
										Std. Pkg. Qty.*	Std. Ctn. Qty.	Bulk Pkg. Qty.	Bulk Ctn. Qty.
<b>STANDARD CROSS SECTION</b>													
B2M2S-L	8.0 (203)	.185 (4.7)	.045 (1.2)	.220 (5.6)	.320 (8.1)	1.15 (29.2) x .91 (23.1)	2.00 (51)	50 (222)	GTS, GS2B, GS4H, PPTS, ST S2 or STH2	50	500	500	2500
B3M2S-L						1.81 (46.0) x .91 (23.1)				50	500	500	2500
B4M2S-L						2.47 (62.7) x .91 (23.1)				50	500	500	2500

\*Order the number of pieces required in multiples of packaging quantities.

\*\*For Weather Resistant ties, add -0 to the suffix (example: BM1M-C0).

‡Part number shown for natural nylon.



# PANDUIT® DOME-TOP® Barb Ty Cable Ties

## Part Number System (Example of BT2S-C0)

BT	2	S	—	C	0
<b>Part Description</b>	<b>Size</b>	<b>Cross Section</b>	<b>Screw Hole Size</b>	<b>Package Size</b>	<b>Color</b>
BT = Barb Ty Cable Tie	(Approximate Bundle Diameter)	SM = Subminiature	(Clamp Ties Only)	L = 50	See Material / Color Chart.
BC = Barb Ty Clamp Tie		M = Miniature	-S4 =#4 (M2.5)	C = 100	Not all ties available in all colors.
BF = Barb Ty Flag Tie		I = Intermediate	-S6 =#6 (M3)	TL = 250	
BM = Barb Ty Marker Tie		S = Standard	-S8 =#8 (M4)	D = 500	
B2M = Barb Ty Marker Tie		LH = Light Heavy	-S10 =#10 (M5)	M = 1000	
B3M = Barb Ty Marker Tie		H = Heavy	-S25 =1/4" (M6)		
B4M = Barb Ty Marker Tie		EH = Extra Heavy			
BW = Barb Ty Wnged Push Mount Tie					

The following provides the color number for PANDUIT part numbers and U.S. military standard part numbers.

Material	6.6 Nylon															
	‡ Nat.	Black -	‡ Black -	‡ Brown	‡ Red	‡ Orange	‡ Yellow	‡ Green	‡ Blue	‡ Purple	‡ Grey	White	Tel Gray	Black **	Heat Stab. Black	Heat Stab. Nat.
<b>PANDUIT® Part No. Suffix</b>	None	0	00									10	14	20	30	39
<b>AS3367, Color Suffix</b>	9	*	0	1	2	3	4	5	6	7	8	*	*	*	*	*

\*Not applicable to military specified parts

\*\*Pigmented Black

-Weather Resistant - For greater resistance to ultraviolet light

‡Meets AS3367 where applicable (specify number when ordering)

## Also Available from the Worldwide Supplier of Cable Ties



**PAN-TY®**  
Cable Ties, Clamp Ties,  
Marker Ties



**BELT-TY™**  
In-Line Cable Ties



Specialty Cable Ties



Manual, Pneumatic and Automatic  
Cable Tie Installation Tools

Our products are warranted to be free from defects in material and workmanship at the time of sale but our obligation under this warranty is limited to the replacement of any product proved to be defective within 6 months (for product) or 90 days (for tools) from the date of delivery. Tool warranty is void if Panduit tools are modified, altered or misused in any way. Use of Panduit tooling with any product other than the specified Panduit products for which the tool was designed, constitutes misuse. Before using, user shall determine the suitability of the product for his intended use and user assumes all risk and liability whatsoever in connection therewith. This warranty is made in lieu of and excludes all other warranties, expressed or implied. THE IMPLIED WARRANTIES OF MERCHANTABILITY AND FITNESS FOR A PARTICULAR USE ARE SPECIFICALLY

EXCLUDED. Neither seller nor manufacturer shall be liable for any other injury, loss or damage, whether direct or consequential, arising out of the use of, or the inability to use, the product. The information contained in this literature is based on our experience to date and is believed to be reliable. It is intended as a guide for use by persons having technical skill at their own discretion and risk. We do not guarantee favorable results or assume any liability in connection with its use. Dimensions contained herein are for reference purposes only. For specific dimensional requirements consult the factory. This publication is not to be taken as a license to operate under, or a recommendation to infringe any existing patents. This supersedes and voids all previous literature, etc.



Panduit Corp.  
Tinley Park, IL 60477-3091

For Customer Service, contact:  
Phone: 800-777-3300  
Fax: 708-532-1811  
For Technical Support, contact:  
866-405-6660  
Email: ct-support@panduit.com  
Website: www.panduit.com/eg

Panduit Canada  
140 Amber St.  
Markham, Ontario L3R 3J8

WORLDWIDE SUBSIDIARIES AND SALES OFFICES

**For Pricing and Further Information –  
Contact your local  
PANDUIT Distributor or Sales Office**

SA-CT08BR01A  
Printed in U.S.A.