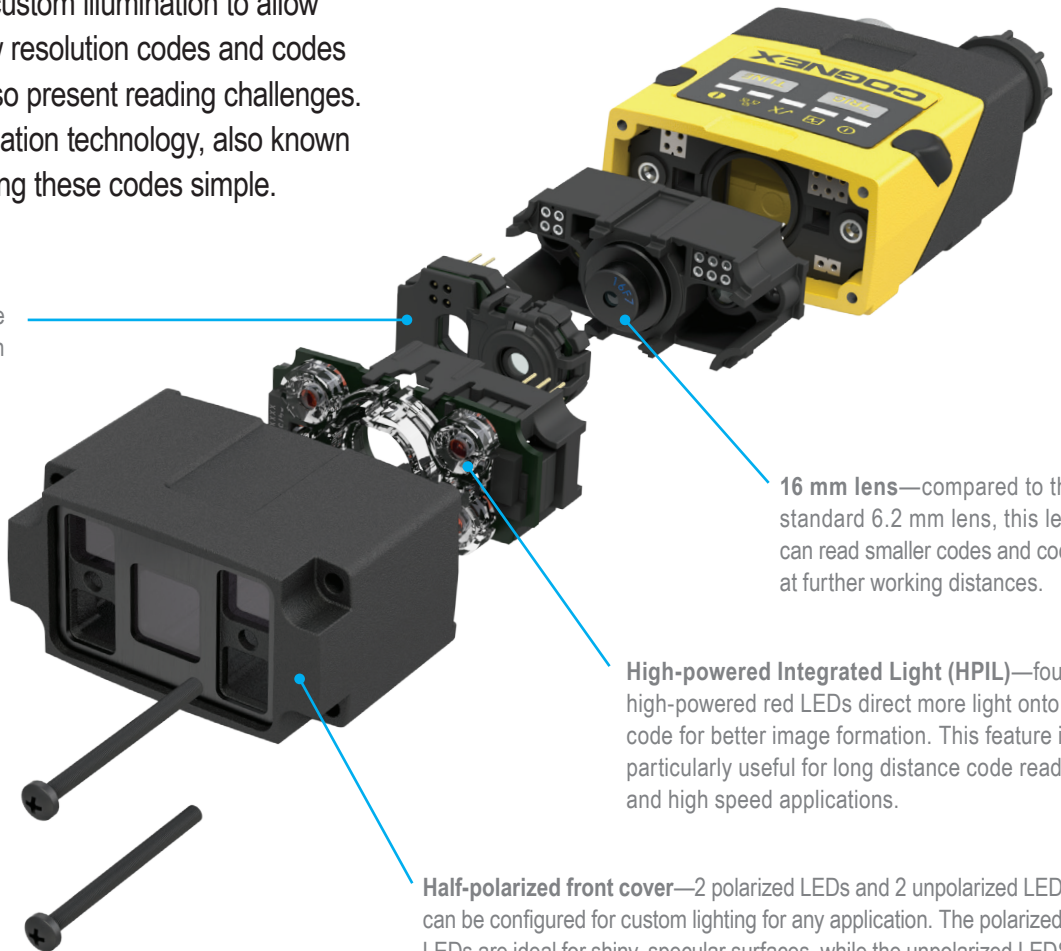


DATAMAN 150/260 SERIES BARCODE READERS WITH IMAGEMAX TECHNOLOGY

Optimal image formation for any code

Codes on round, shiny, highly reflective, or specular surfaces very often require custom illumination to allow them to be read reliably. Low resolution codes and codes at long working distances also present reading challenges. Cognex modular image formation technology, also known as ImageMax™, makes reading these codes simple.

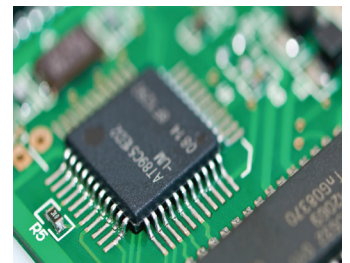
Liquid lens technology—the liquid lens module gives you the ability to perform autofocus with no moving parts.



16 mm lens—compared to the standard 6.2 mm lens, this lens can read smaller codes and codes at further working distances.

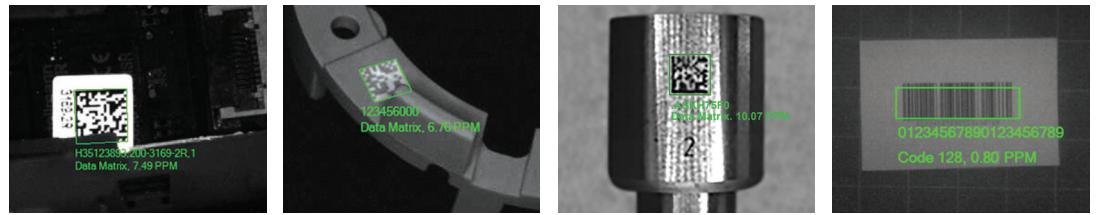
High-powered Integrated Light (HPIL)—four high-powered red LEDs direct more light onto the code for better image formation. This feature is particularly useful for long distance code reading and high speed applications.

Half-polarized front cover—2 polarized LEDs and 2 unpolarized LEDs can be configured for custom lighting for any application. The polarized LEDs are ideal for shiny, specular surfaces, while the unpolarized LEDs are for long distance and high speed applications. Fully polarized and unpolarized front covers are also available and can be easily interchanged.

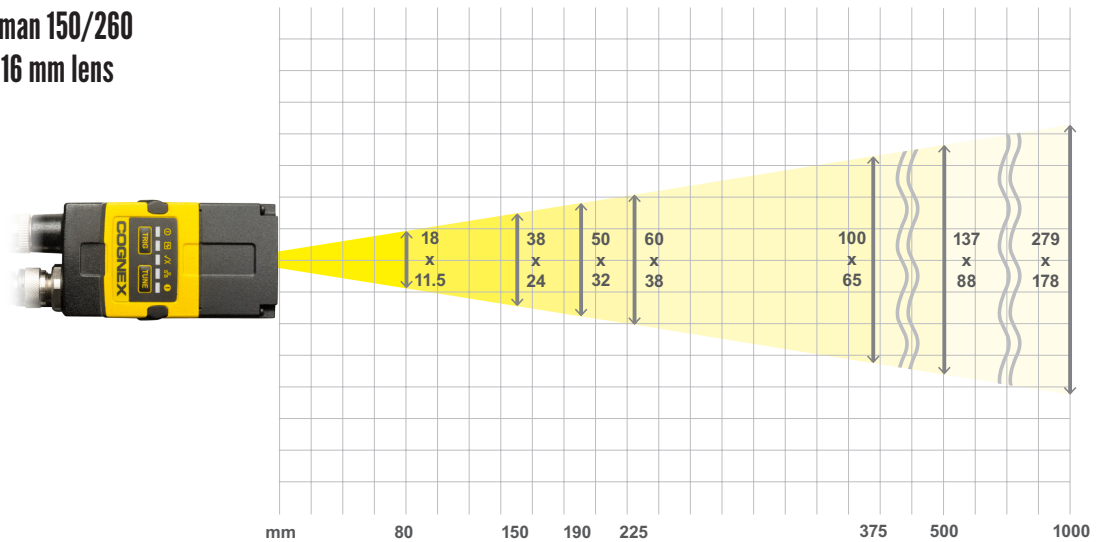




DataMan 150/260 barcode readers with ImageMax technology is an ideal solution for reading wide range of hard to read 1-D linear and 2-D matrix codes in even the most challenging environments in industries, such as automotive, electronics, packaging, and logistics.



Dataman 150/260 with 16 mm lens



Reading distances

	@80		@150		@190		@225		@375		@500		@1000	
1D	30 mil	60–100 mm	30 mil	110–190 mm	30 mil	130–245 mm	30 mil	155–290 mm	30 mil	255–490 mm	30 mil	340–650 mm	30 mil	700–1250 mm
	15 mil	70–90 mm	15 mil	130–165 mm	15 mil	165–215 mm	15 mil	190–260 mm	15 mil	325–430 mm	15 mil	425–575 mm		
	6 mil	78–82 mm	6 mil	145–155 mm	6 mil	185–200 mm	6 mil	215–235 mm	6 mil	373–377 mm				
2D	30 mil	60–100 mm	30 mil	115–185 mm	30 mil	140–235 mm	30 mil	170–275 mm	30 mil	280–470 mm	30 mil	370–625 mm	30 mil	800–1150 mm
	15 mil	75–85 mm	15 mil	140–160 mm	15 mil	170–210 mm	15 mil	200–250 mm	15 mil	335–415 mm	15 mil	450–515 mm		
	6 mil	78–82 mm	6 mil	148–152 mm	6 mil	185–195 mm	6 mil	223–227 mm						

VISIT cognex.com/imagemax

for more information on Cognex image formation technology and DataMan 150/260 series fixed-mount barcode readers.

COGNEX

Companies around the world rely on Cognex vision and ID to optimize quality, drive down costs and control traceability.

Corporate Headquarters One Vision Drive Natick, MA 01760 USA

Americas

Americas +1 844-999-2469

Europe

Austria +49 721 958 8052
 Belgium +32 289 370 75
 France +33 1 7654 9318
 Germany +49 721 958 8052
 Hungary +36 30 605 5480
 Ireland +44 121 29 65 163
 Italy +39 02 3057 8196

Netherlands +31 207 941 398
 Poland +48 717 121 086
 Spain +34 93 299 28 14
 Sweden +46 21 14 55 88
 Switzerland +41 445 788 877
 Turkey +90 216 900 1696
 United Kingdom +44 121 29 65 163

Asia

China +86 21 6208 1133
 India +9120 4014 7840
 Japan +81 3 5977 5400
 Korea +82 2 539 9980
 Singapore +65 632 55 700
 Taiwan +886 3 578 0060

©Copyright 2016, Cognex Corporation. Information in this document is subject to change without notice. All Rights Reserved. Cognex and DataMan are registered trademarks of Cognex Corporation. ImageMax is a trademark of Cognex Corporation. All other trademarks are property of their respective owners. Lit No. ImageMax-DS-201604

www.cognex.com