

Cablecraft's range contains sizes for cables from 0.5mm² - 6mm² and stud sizes from 2.2mm to 8.4mm. They maintain strength during the crimping cycle, and are electro tin plated for maximum corrosion resistance and conductivity.



SPECIFICATION:

MATERIAL: Oxygen-Free, High Conductivity Copper Sheet with High Ductility Silver Alloy Brazing.

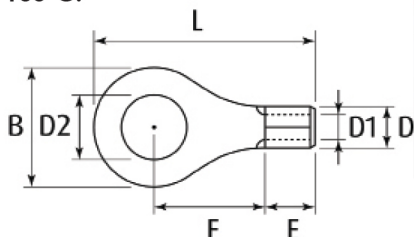
MAX. ELEC. RATING - 600V - 105°C:

0.5-1.5-19 AMP

1.5-2.5-27 AMP

4-6-48 AMP

APPROVALS: UL Approved E211389.



PART NUMBERS:

DIMENSIONS (mm)

WIRE Ø mm ²	PART NO.	STUD SIZE D2 (mm)	B	L	F	E	D	D1	PACK QTY
0.5 - 1.5	CR1-2	2.2	6.6	14.6	6.3	5.0	3.4	1.7	100
	CR1-3	3.2	5.5	11.7	4.0	5.0	3.4	1.7	100
	CR1-3.5	3.7	5.5	11.7	4.0	5.0	3.4	1.7	100
	CR1-3.5L	3.7	7.8	14.6	6.3	5.0	3.4	1.7	100
	CR1-4	4.3	6.6	14.6	6.3	5.0	3.4	1.7	100
	CR1-4L	4.3	8.0	16.0	7.0	5.0	3.4	1.7	100
	CR1-5	5.3	8.0	16.0	7.0	5.0	3.4	1.7	100
	CR1-6	6.5	11.6	21.8	11.1	5.0	3.4	1.7	100
1.5 - 2.5	CR2-3	3.2	6.4	12.5	4.3	5.0	4.1	2.3	100
	CR2-3.5	3.7	6.4	12.5	4.3	5.0	4.1	2.3	100
	CR2-3.5L	3.7	6.6	14.5	6.3	5.0	4.1	2.3	100
	CR2-4	4.3	6.6	14.5	6.3	5.0	4.1	2.3	100
	CR2-5	5.3	8.5	17.0	7.8	5.0	4.1	2.3	100
	CR2-6	6.5	12.0	22.0	11.0	5.0	4.1	2.3	100
	CR2-8	8.4	12.0	22.0	11.0	5.0	4.1	2.3	100
	CR2-10	10.5	13.6	25.7	13.9	5.0	4.1	2.3	100
4 - 6	CR3-3.5	3.7	7.2	15.5	5.9	6.0	5.6	3.4	50
	CR3-4	4.3	7.2	15.5	5.9	6.0	5.6	3.4	50
	CR3-4L	4.3	9.5	19.0	8.3	6.0	5.6	3.4	50
	CR3-5	5.3	9.5	19.0	8.3	6.0	5.6	3.4	50
	CR3-6	6.5	12.0	22.5	10.5	6.0	5.6	3.4	50
	CR3-8	8.4	15.0	27.2	13.7	6.0	5.6	3.4	50
	CR3-10	10.5	15.0	27.2	13.7	6.0	5.6	3.4	50



CABLECRAFT
creative wiring solutions



Cablecraft House, Circle Business Centre, Blackburn Road, Houghton-Regis, Bedfordshire, LU5 5DD.

Phone: 01582 606033 • Fax: 01582 606063 • Email: sales@cablecraft.co.uk • Web: www.cablecraft.co.uk

VAT NO. GB 639 920 900 • CO. REG. NO. 2478297