

ROCKWELL AUTOMATION ENCOMPASS PARTNERS





Rockwell Automation Encompass Partners

To be the best in your industry, you need to align yourself with companies that are the best in their industries. Through Rockwell Automation's third-party product referencing program, you can quickly locate the products that best solve your application challenges.

Each partner offers enhancements to the performance of the Rockwell Automation Solutions for customers. Products referenced in the program provide functionality and solutions not already delivered by Rockwell Automation and enhance and extend the capability of the Rockwell Automation platform.

The Encompass Partner Program is part of the Rockwell Automation PartnerNetwork, which includes specialists in industries, applications, geographies, technologies and services around the world. This collaboration can help customers harness the knowledge and flexibility needed to respond to rapid change and shifting demand.

The Encompass Partner Program creates a path for critical information exchange and improved solutions in the marketplace by linking technical and commercial resources of Rockwell Automation and the Encompass Partners.

To view the full list of all Rockwell Automation Encompass Partners worldwide please visit www.ab.com/encompass.



PROSOFT TECHNOLOGY

ProSoft Technology® specialise in the development of communication solutions compatible with the large automation suppliers' controllers such as Rockwell Automation. The primary focus is to provide connectivity solutions that link dissimilar automation products. ProSoft Technology provides field proven connectivity and communication solutions that bridge between various automation products as seamlessly as if they were all from the same supplier.

The Prosoft Technology product portfolio includes:

- > In-Chassis Communication Interface Modules
- > Competitive Network Migration Solutions
- > Remote I/O Migration Solutions
- > Linux Development Module for ControlLogix®
- > Energy Solutions (IEC 61850 Gateways)
- > In-Chassis Flow Computers
- > Industrial Wireless Solutions - Fast Industrial Hotspots
- > Watertight Industrial Hotspots (IP67 rated and ATEX Zone 2)
- > Industrial Cellular Gateway (M2M) Secure VPN Access
- > Ethernet and Serial Frequency Hopping Radios



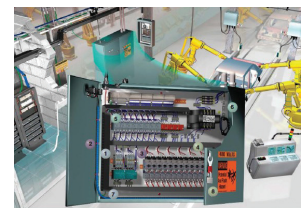
PANDUIT

Industrial Ethernet networking is advancing in technology applications and rapidly being deployed. As Industrial Automation moves away from unmanaged to managed solutions, more configuration and compliance specifications are required. The integration of IT and Enterprise operations introduces the need for security, ease-of-use, rapid deployment and network management support.

Together, Rockwell Automation and Panduit are driving integrated solutions that help you reduce risk, improve reliability, and successfully implement EtherNet/IP solutions and architectures. Our strategic alliance helps customers develop a robust, secure, future-ready physical network infrastructure for industrial environments.

This is achieved through:

- > Optimised physical network infrastructure solutions from Panduit developed to align with Rockwell Automation technologies and solutions helping to reduce risk, time for deployment, and total cost of ownership
- > Effective collaboration between Manufacturing and IT through alignment between Panduit's Unified Physical InfrastructureSM (UPI) approach and the Rockwell Automation/Cisco managed switch solutions



HMS Industrial Networks are leading global suppliers of industrial communication technology. HMS provide network enabling solutions for Rockwell Automation products such as drives, I/O, power regulators and gateway solutions.

The HMS portfolio includes product families such as:

- > Anybus - Solutions for connecting industrial devices and networks:
The Anybus CompactCom concept consists of ready-made communication interfaces for fieldbus and industrial Ethernet and comes in several form factors; Chip, Brick or Module
- > Netbiter - Remote management of industrial devices:
The Netbiter EasyConnect communication gateway connects to your remote equipment/machinery using a serial, Ethernet or I/O connection. The gateway sends information via the cellular network (3G/GSM/GPRS) or via Ethernet to the cloud-based Netbiter Argos data center
- > IXXAT - Industrial communication especially for automotive and safety:
IXXAT is a supplier of communication technology for industrial automation, machine manufacturing and the automotive industry and offers software and hardware solutions for CAN, a number of industrial Ethernet standards and IEEE 1588, FlexRay, and LIN
- > eWON - Remote access and management of industrial equipment:
eWON remote solutions allow customers to access, monitor and control industrial machinery online.



HARDY PROCESS SOLUTIONS

Specialists in Process Weighing Solutions - Hardy Process Solutions have been providing customers with process control solutions for over 90 years and are best known for their innovative technology. The company prides itself on its ability to continuously provide superior product quality and excellent customer support and is an ISO 9001-certified manufacturer.

- > Silo & Tank Measurement Solutions - Designed to improve your inventory management accuracy
- > Feed and Rate Control Solutions - To help you optimize batching/blending accuracy and throughput
- > Fill and Dosing Control Solutions - Allowing you to tighten the tolerances on your packaging lines
- > Check Weighing Solutions - Enhancing your product inspection capability

Hardy's single-slot PLC/PAC modules read and condition data from strain gage load cells and communicate it over the I/O chassis backplane to the processor. They provide basic weight data or are loaded with sophisticated algorithms to perform application-specific industrial weighing processes from simple batch weighing to loss-in-weight control, filling or dispensing. Modules are available for Allen-Bradley® ControlLogix, CompactLogix, MicroLogix 1500, Micro800 or SLC500 chassis.



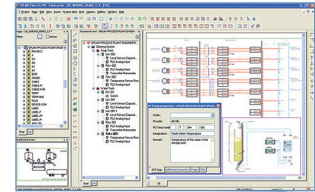
EPLAN

EPLAN Electric P8 is an electrical engineering design program that offers unlimited possibilities for project planning, documentation, and management of automation projects. The automatic production of detailed reports based on wiring diagrams is an integral part of a comprehensive documentation system and provides subsequent phases of the project, such as production, assembly, commissioning and service with the data required.

Engineering data from other project areas such as fluid and pneumatic engineering can be exchanged via interfaces within the CAE software. This therefore guarantees consistency and integration throughout the entire product development process.

EPLAN offers many advantages over traditional CAD packages, the main benefits include:

- > The ability to automatically connect, mend or break lines
- > Instantaneous device tagging and wire numbering
- > Provision of point to point wire lists
- > Automatic creation of reports and BOM's



MOLEX

With 30 Brad communication products in the Encompass Program, Molex provides everything from network interface cards to diagnostics.

Brad® harsh-duty I/O modules provide quick and reliable solutions for connecting industrial controllers to I/O devices in harsh environments where liquids, dust or vibration may be present. These machine-mountable Harsh-Duty I/O modules can support all major industrial fieldbus' including PROFIBUS-DP, DeviceNet, CANopen, Modbus TCP, EtherNet/IP and PROFINET I/O.

Brad® PAC/PLC communication modules are perfect for a wide range of applications including factory automation, process control and complex machines and are available for various industrial networks and fieldbus including: Modbus Serial, Modbus TCP, PROFIBUS DP, and AS-interface.

molex®



SPECTRUM CONTROLS

Since 1983, Spectrum Controls has continued to be the premier provider of hardware and related software products for the industrial controls marketplace. Products fall into three major categories: I/O modules, human-machine interfaces and communications devices.

Spectrum Controls Allen-Bradley compatible I/O use licensed backplane technology and integrate into your system using existing RSLogix programming software.

Spectrum have created a new BACNet communications plug in module for the Allen Bradley Micro800 family of micro controllers, providing an Interface to BACNet serial and Ethernet Building Automation Networks.

SE SPECTRUM
CONTROLS



RITTAL

Rittal is a German manufacturing company specialising in enclosures, climate-control technology, power distribution gear and IT infrastructure.

Rittal's modular system architecture means that their solutions can be tailored to your precise needs and requirements – completely individual, tailored to your company and industry, directly from Rittal's standard product range.

- > Enclosures
- > Power distribution
- > Climate control
- > IT Infrastructure
- > Software and services
- > Electronic packaging



AMCI

Advanced Micro Controls Inc (AMCI) products help make factories run more efficiently, make product manufacturing smarter and automation environments more productive.

AMCI is a leading U.S. based manufacturer with a global presence. Their products are sold all over the world, improving the performance of today's factories and automation systems.

With up to seven different product families including:

- > Stepper Motor Control
- > PLC Modules
- > Rotary Sensors
- > Networked Devices
- > Stand Alone Solutions
- > Packaging Systems Controls
- > Stamping Press Technologies



WITTENSTEIN

Wittenstein designs and manufactures alpha servo components and complete electromechanical systems and is a specialist in mechatronic solutions for engineering applications in general and drive technology. Their products set benchmarks worldwide in mechanical engineering and drive systems.

From low-backlash planetary gearheads through servo right-angle gearheads and complete drive units, Wittenstein pushes back the boundaries of precision.

Wittenstein products offer you more performance in less space for the most compact drive requirements. This will allow your machine to perform better if specific system solutions are required.



WITTENSTEIN



Routeco has successfully established itself as one of Europe's leading distributors of industrial automation and control products. Over an impressive period of sustained and continuous growth, Routeco has secured a network of sales locations employing over 300 personnel.

> GROUP HEADQUARTERS

Davy Avenue, Knowlhill, Milton Keynes, MK5 8HJ. United Kingdom.
T. 01908 666777 F. 01908 666738

> UK OFFICES

COVENTRY

T. 024 7667 6513
F. 024 7667 8490
E. coventry@routeco.co.uk

DUDLEY

T. 01384 294888
F. 01384 293777
E. dudley@routeco.co.uk

MANCHESTER

T. 0161 737 4448
F. 0161 737 4449
E. manchester@routeco.co.uk

PETERLEE

T. 0191 518 2888
F. 0191 518 2899
E. peterlee@routeco.co.uk

DARTFORD

T. 01322 228588
F. 01322 228850
E. dartford@routeco.co.uk

GLASGOW

T. 01355 264629
F. 01355 264630
E. glasgow@routeco.co.uk

MILTON KEYNES

T. 01908 666777
F. 01908 666738
E. sales@routeco.co.uk

SOUTHAMPTON

T. 023 8027 4407
F. 023 8027 4406
E. southampton@routeco.co.uk

DERBY

T. 01332 202008
F. 01332 202009
E. derby@routeco.co.uk

LEEDS

T. 01924 439900
F. 01924 439901
E. leeds@routeco.co.uk

PETERBOROUGH

T. 01733 361000
F. 01733 238092
E. peterborough@routeco.co.uk

SOUTH WEST

T. 01454 625444
F. 01454 625789
E. southwest@routeco.co.uk

> AUSTRIA OFFICE

Routeco GesmbH, Egger-Lienz-Str. 10, 4050 Traun. Austria.
T. 07229 64266-0 F. 07229 64266-51 E. linz@routeco.com

> THE NETHERLANDS OFFICE

Routeco B.V. De Maas 22b, 5684 PL Best. Netherlands.
T. 0499-801 801 F. 0499-327 128 E. sales@routeco.nl



Premier
Partner

