

# ASSEMBLY DIVISION SOLUTIONS



**Routecco**  
A Sonepar Company



## The Routeco Assembly Division provides value-added solutions

Utilising the extensive range of stock within our Milton Keynes Logistic Centre we can provide a fast turnaround of standard and custom build assemblies. If you are building the same or a similar combination of panel or rail assemblies on a regular basis, it may save you time and money by purchasing as a 'ready to fit' assembly.

We can provide bespoke solutions for OEM type customers who require repeat volumes scheduled over an agreed time period. There are so many opportunities for standard and custom build assemblies.

From the initial concept to full test, we will work with you to ensure that the design and functionality meet your requirements.



## Standard Build or Custom Build, the choice is yours...

With many years experience in the manufacture of panel wiring systems, our fully trained wireman and assemblers offer a high level of service to our customers at all stages of the manufacturing process which is in line with our ISO9001-2008 certified manufacturing and quality systems.

The challenging demands of both planned and reactive maintenance programs and the associated potential interruptions to production, place heavy reliance on readily available replacement products. Routeco offer standard build solutions for a quick turnaround on many electrical assembled components, helping to minimise downtime at your manufacturing plant.

Whether your requirements are for small quantities or multiples for OEM applications, Routeco will work closely with you to custom build your electrical panel assembly. All panel, backplate and terminal rail assemblies are supplied to your specific design and requirements. Custom metalwork can also be accommodated.

Standard Build advantages include:

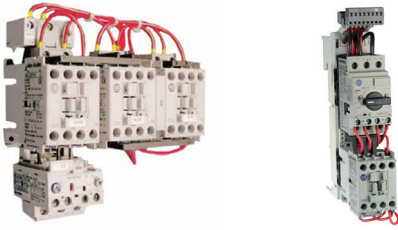
- > Broad range of sizes, voltages and ratings available
- > All products are constructed from standard components making them easy to maintain
- > Certified ATEX junction box and control station availability
- > All standard build products can be adapted to your specific requirements

Custom Build advantages include:

- > Reduce stock holding: buy the final assembly exactly as you require
- > Reduce purchasing cost: only order one part instead of multiple items
- > Reduce labour cost: saves skilled work force time in cutting rails and simple assembly
- > Reduce material costs: eliminates unused components and material waste
- > Sourcing convenience: easily combined with our other value add services to provide a 'single source' solution



## OPEN DIN RAIL/BUSBAR MOUNTING STARTERS



- DOL/Reversing/Star-Delta Starters
- Short Circuit coordination type 2 to IEC 60947-1
- IEC and UL/CSA compliant
- Motor switching using 100-C contactors
- Isolation and motor protection using 140M motor protection circuit breakers
- AC and DC control voltages
- Range of auxiliary contacts available on contactor and breaker
- 60mm centres on busbar versions
- Other options available on request

## ENCLOSED STARTERS



- DOL/Reversing/Star-Delta Starters
- Moulded plastic/Sheet steel/Stainless steel construction
- IP66 Protection
- Short circuit coordination type 2 to IEC 60947-1
- IEC and UL/CSA compliant
- Start/stop/forward/reverse push button and isolator options
- Electrical and mechanical interlocks on combination starters
- AC control voltage

## ISOLATORS/LOAD SWITCHES



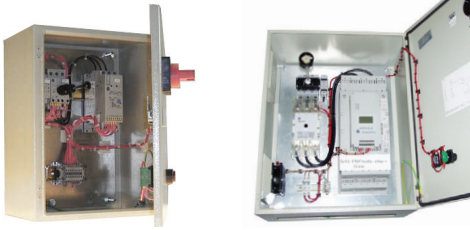
- 3-pole and 6-pole surface mounted enclosed disconnect switch
- Rated current up to 100A (500V AC-21A)
- Finger proof switch body: IP20
- Water spray and dust proof: IP65
- Yellow legend plate and red knob
- Provision for locking with 3 padlocks
- Ground and neutral terminals can be mounted in base of enclosure
- Provides on-load making and breaking functions as well as isolation
- Sheet steel and stainless steel options available

## ENCLOSED DRIVES



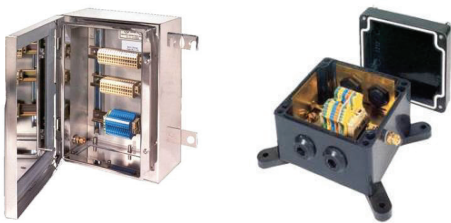
- IP54 enclosed drive
- 240V 1-phase and 415V 3-phase options
- Internal PID loop and integral dynamic brake chopper
- EMC filter included
- Panel mount IP66 HIM unit
- Incoming circuit breaker interlocked with front access door
- Integral RS485 comms for multi-drop configurations
- Programmable via Drive Explorer software

## ENCLOSED SOFT STARTS



- Interlocked front access door with red/yellow isolator handle
- Built in overload and selectable voltage ramp, kick start or current limit starting
- Stop/start push buttons
- Soft stop as standard
- Available as non-combination or circuit breaker disconnect
- Broad size offering up to 1250A
- Options include HIM and comms modules
- Terminals for circuit breaker trip, soft start fault and E-Stop circuit

## ATEX JUNCTION BOXES



- Available in 12 sizes and 3 standard depths
- Equipped with up to 4 gland plates
- Improved temperature performance
- IP66/IP67 protection
- Completely removable lid - without a tool
- Earthing stud in the cover and base of the enclosure
- Welded mounting feet
- International approvals

## ATEX CONTROL STATIONS



- Available in 4 sizes
- Enclosure material: Polyamide, black
- 1 x M20 entry on 1,2,3 gang. 2 x M25 entry on 4 gang
- Brass ECP's available
- Maximum rating of contacts, 960V AC, 16A
- Buttons/switches are 1NO+1NC contacts unless stated
- Push button labels provided are: O, I, START, STOP
- Lamp 20-250V AC/DC Lens covers: white, red, green, yellow, blue

## OTHER STANDARD BUILD EXAMPLES



### Control Stations

- Pushbutton or selector switch operator
- Aluminium, plastic and stainless steel enclosure
- Protection rating: IP66
- Contact blocks included



### Emergency Stop Stations

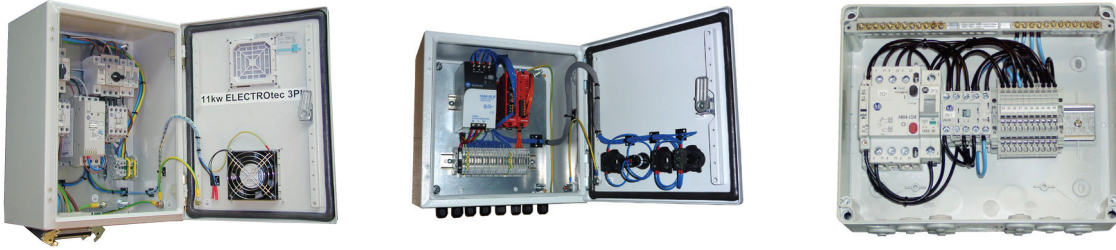
- Stainless steel 316L
- Protection Rating: IP66
- Red mushroom 40mm diameter
- Contact blocks included



### Ethernet Cables

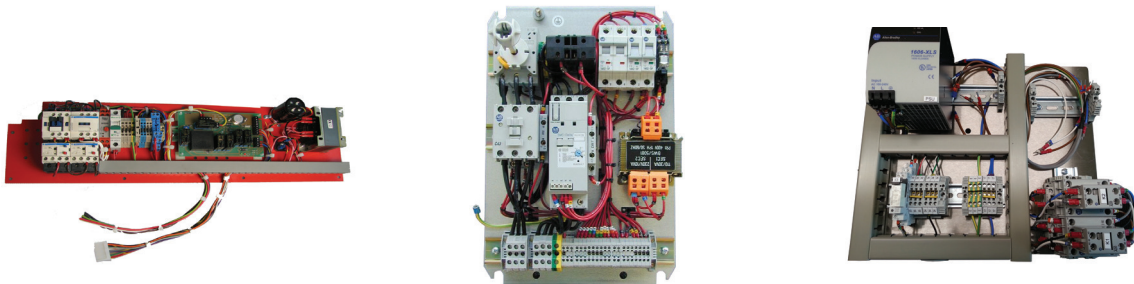
- Cat. 5E and Cat. 6
- Various IP options: IP20...IP67
- Length: 1, 2, 3, 5 and 10m

## CUSTOM PANEL ASSEMBLIES



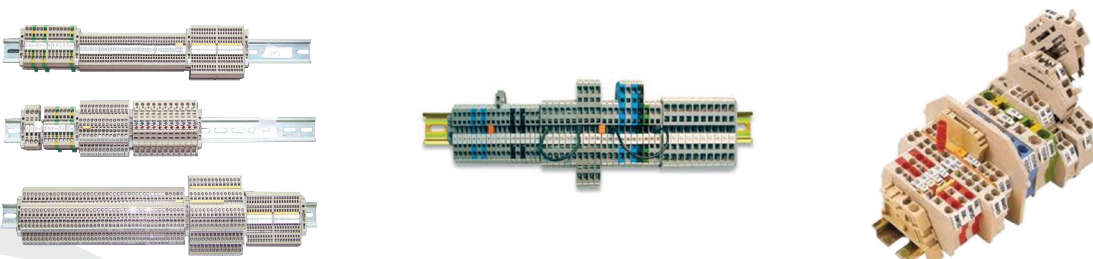
To satisfy the requirements of most operating environments, enclosed units are constructed using insulated, sheet steel or stainless steel enclosures and are available in a variety of sizes and in IP ratings appropriate to almost every industrial environment.

## CUSTOM MOUNTING PLATE ASSEMBLIES



Often customers will require non-standard backplate assemblies in order to meet the specific configurations or requirements of machine construction. Routeco can build using 'free-issue' backplates or will source directly on the customers' behalf.

## TERMINAL RAIL ASSEMBLIES



Suitable for customers requiring a combination of DIN rail assemblies on a regular basis, time and money can be saved by purchasing 'ready to fit' assemblies. This will save time cutting rail, mounting terminals and creating custom marking.

# TYPICAL PROJECTS



Pressurisation Control Panel



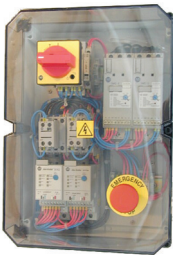
Comms Distribution Unit



Safety Monitoring Unit



System Monitoring Panel (Stainless Steel)



Clear Fronted Starter Panel



Custom 19" Rack Solution



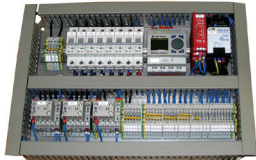
Terminal Distribution Box



Enclosed HMI Panel (Stainless Steel)



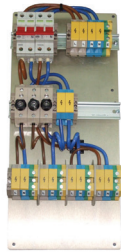
Custom Consumer Unit



Custom Backplate Assembly



Custom 19" Rack Solution



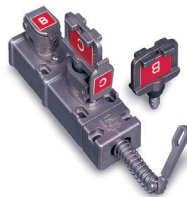
Power Distribution Plate



MCB/Terminal Junction Box



Enclosed IS Barriers



Custom Trapped-key Interlocks



Plastic Terminal Box

Routeco has successfully established itself as one of Europe's leading distributors of industrial automation and control products. Over an impressive period of sustained and continuous growth, Routeco has secured a network of sales locations employing over 300 personnel.

## > GROUP HEADQUARTERS

Davy Avenue, Knowlhill, Milton Keynes, MK5 8HJ. United Kingdom.  
T. 01908 666777 F. 01908 666738

## > UK OFFICES

### COVENTRY

T. 024 7667 6513  
F. 024 7667 8490  
E. coventry@routeco.co.uk

### DUDLEY

T. 01384 294888  
F. 01384 293777  
E. dudley@routeco.co.uk

### MANCHESTER

T. 0161 737 4448  
F. 0161 737 4449  
E. manchester@routeco.co.uk

### PETERLEE

T. 0191 518 2888  
F. 0191 518 2899  
E. peterlee@routeco.co.uk

### DARTFORD

T. 01322 228588  
F. 01322 228850  
E. dartford@routeco.co.uk

### GLASGOW

T. 01355 264629  
F. 01355 264630  
E. glasgow@routeco.co.uk

### MILTON KEYNES

T. 01908 666777  
F. 01908 666738  
E. sales@routeco.co.uk

### SOUTHAMPTON

T. 023 8027 4407  
F. 023 8027 4406  
E. southampton@routeco.co.uk

### DERBY

T. 01332 202008  
F. 01332 202009  
E. derby@routeco.co.uk

### LEEDS

T. 01924 439900  
F. 01924 439901  
E. leeds@routeco.co.uk

### PETERBOROUGH

T. 01733 361000  
F. 01733 238092  
E. peterborough@routeco.co.uk

### SOUTH WEST

T. 01454 625444  
F. 01454 625789  
E. southwest@routeco.co.uk

## > AUSTRIA OFFICE

Routeco GesmbH, Egger-Lienz-Str. 10, 4050 Traun. Austria.  
T. 07229 64266-0 F. 07229 64266-51 E. linz@routeco.com

## > THE NETHERLANDS OFFICE

Routeco B.V. De Maas 22b, 5684 PL Best. Netherlands.  
T. 0499-801 801 F. 0499-327 128 E. sales@routeco.nl

